

# Kapsowar Ward Health Profile

## Situational Analysis

Kapsowar Ward faces a complex array of health challenges as indicated by the data. Despite achieving the best performance in certain areas such as skilled birth attendance (114.6%) and health insurance coverage (32%), it still ranks poorly in others, notably child immunization (58.9%) and nutrition indicators like stunting (28.3%) and wasting (5.7%). The ward's healthcare system is also strained by high incidences of diarrheal diseases (26.6%), high malaria rates (2%), and suboptimal sanitation (latrine coverage of 80%). Given these challenges, there is a critical need for targeted interventions in maternal and child health, infectious disease control, sanitation, and health infrastructure development.

## 1. Skilled Birth Attendance and Maternity Services

- **Indicator:** Births attended by skilled health staff (114.6% Ward, 67.5% County, Rank: 1)
- **Justification:** The high percentage of skilled birth attendance in Kapsowar is a significant achievement, but efforts should continue to maintain and expand maternal healthcare services to sustain this progress.
- **Proposed Interventions:**
  - **Construction of Modern Maternity Wing (Ksh. 3,000,000):** Modernize facilities to provide safe and efficient delivery services.
  - **Procurement of Medical Equipment (Ksh. 6,000,000):** Equip the facilities with modern delivery beds, oxygen concentrators, and baby warmers to enhance maternal and child health services.
  - **Mama Penda Kits (Ksh. 2,500,000 annually):** Support facility-based deliveries with maternal kits.
  - **Community Health Volunteers (CHPs) Performance Incentives (Ksh. 1,728,000):** Encourage outreach and awareness about skilled birth attendance and maternal health.

## 2. Immunization Coverage

- **Indicator:** Proportion of children fully immunized (58.9% Ward, 73.3% County, Rank: 9)
- **Justification:** Immunization rates in Kapsowar are lower than the county average, which suggests a need for stronger outreach and education to boost coverage.
- **Proposed Interventions:**
  - **Outreach Programs (Ksh. 2,500,000 annually):** Increase access to immunization services through mobile clinics and health outreach activities.
  - **Automation and ICT Equipment (Ksh. 3,000,000):** Improve data collection and management for immunization follow-up and reporting.
  - **CHPs Capacity Building (Ksh. 2,500,000):** Train and equip CHPs to conduct door-to-door immunization awareness and follow-up.

### 3. Water, Sanitation, and Hygiene (WASH)

- **Indicators:**
  - **Latrine Coverage (80% Ward, 73.9% County, Rank: 8)**
  - **Diarrheal Disease Incidence (26.6% Ward, 8.4% County, Rank: 1)**
  - **Handwashing Coverage (40% Ward, 43.4% County, Rank: 10)**
- **Justification:** The high prevalence of diarrheal diseases and lower-than-ideal latrine and handwashing coverage point to gaps in water and sanitation infrastructure, which need urgent attention.
- **Proposed Interventions:**
  - **Construction of Toilets (Ksh. 600,000 per facility):** Improve sanitation in dispensaries such as Sisiya Dispensary.
  - **Piped Water Connections (Ksh. 500,000 per facility):** Ensure that all healthcare facilities have reliable access to clean water.
  - **Water Tanks and Installation (Ksh. 200,000 each):** Install water tanks in all dispensaries and health centers to secure water supply.
  - **Construction of Placenta Pits and Burning Chambers (Ksh. 300,000 each):** Enhance medical waste management in all health facilities.

### 4. Malaria Control

- **Indicator:** Malaria incidence (2% Ward, 21.6% County, Rank: 12)
- **Justification:** Despite relatively low malaria rates, continued vigilance is necessary to prevent resurgence and ensure sustained malaria control.
- **Proposed Interventions:**
  - **Malaria Control Programs (Ksh. 2,500,000):** Implement initiatives such as Indoor Residual Spraying (IRS) and insecticide-treated net distribution across high-risk areas.
  - **Procurement of Malaria Drugs (Ksh. 2,500,000 annually):** Ensure an adequate supply of malaria treatment medications.

### 5. Nutrition

- **Indicators:**
  - **Prevalence of Stunting (28.3% Ward, 25.6% County, Rank: 3)**
  - **Prevalence of Wasting (5.7% Ward, 5.1% County, Rank: 3)**
- **Justification:** The relatively high prevalence of stunting and wasting requires urgent nutritional interventions to prevent long-term developmental issues in children.
- **Proposed Interventions:**
  - **Nutrition Programs (Ksh. 3,750,000 annually):** Implement targeted nutrition education and food supplementation programs.
  - **Capacity Building for Health Staff (Ksh. 500,000):** Train healthcare providers on managing child malnutrition and stunting.
  - **Community Health Campaigns (Ksh. 2,500,000):** Work with CHPs to promote infant and young child feeding practices.

## 6. Health Insurance Coverage

- **Indicator:** Proportion covered by health insurance (32% Ward, 25% County, Rank: 1)
- **Justification:** The relatively high health insurance coverage in Kapsowar is a positive indicator, but there is potential to expand access to cover more vulnerable populations.
- **Proposed Interventions:**
  - **SHA/SHIF Coverage for Vulnerable Groups (Ksh. 1,000,000):** Provide health insurance for persons with disabilities, the elderly, and other vulnerable groups.

## 7. Emergency Services

- **Indicator:** Lack of formal emergency services in the ward
- **Justification:** The need for better emergency services is critical given the infrastructure gaps and healthcare challenges.
- **Proposed Interventions:**
  - **Emergency Transfer Centre (Ksh. 2,500,000):** Establish an emergency center for prompt transfer and treatment of critically ill patients.
  - **Purchase of Ambulance (Ksh. 10,000,000):** Acquire a dedicated ambulance to support emergency healthcare access.

## 8. Infrastructure and Equipment

- **Proposed Interventions:**
  - **Automation and ICT Equipment (Ksh. 3,000,000):** Implement automated health management information systems (HMIS) to improve service delivery and data management.
  - **Construction of Staff Houses (Ksh. 2,500,000 each):** Build staff accommodation in health centers and dispensaries to address the shortage of healthcare workers and ensure better service availability.
  - **Solar Panel Installation (Ksh. 500,000 per facility):** Install solar panels in all health facilities to ensure continuous power supply.



# KAPSOWAR WARD HEALTH PROFILE

DEPARTMENT OF HEALTH SERVICES

**POPULATION**

**28,402**

**MALE**

**14,092**

**FEMALE**

**14,307**

**HOUSEHOLDS**

**6,138**

## Key Indicators

Indicator	Ward	County	Rank
Births attended by skilled health staff	114.6%	67.5%	1
Incidence of diarrhoeal diseases	26.6%	8.4%	1
Proportion of children fully immunized	58.9%	73.3%	9
Latrine Coverage	80%	73.9%	8
Prevalence of Stunting	28.3%	25.6%	3
Prevalence of Wasting	5.7%	5.1%	3
Handwashing Coverage	40%	43.4%	10
Malaria incidence per 1,000 population	2%	21.6%	12
Eye diseases morbidity rate	3%	3.2%	7
Modern contraceptive prevalence rate	30.5%	35.2%	9
OPD Utilization Rate	1.9	1.9%	5
Proportion covered by a health insurance	32%	25%	1
Teenage pregnancy rate (10-19 years)	15.8%	18.6%	13

## Top Diseases

Disease	%	Cost
URTIs	64.9	7,015,500/-
Disease of the skin	12.3	795,600/-
Diarrhoea	6.4	412,200/-
Pneumonia	6.4	1,243,800/-
Urinary Tract Infection	3.4	804,100/-
Eye Infections	3.0	130,000/-
Malaria	2.1	23,000/-
Typhoid fever	1.5	1,151,500/-
Intestinal worms	0.1	11,000/-

## Burden of Preventable Diseases

**50%**

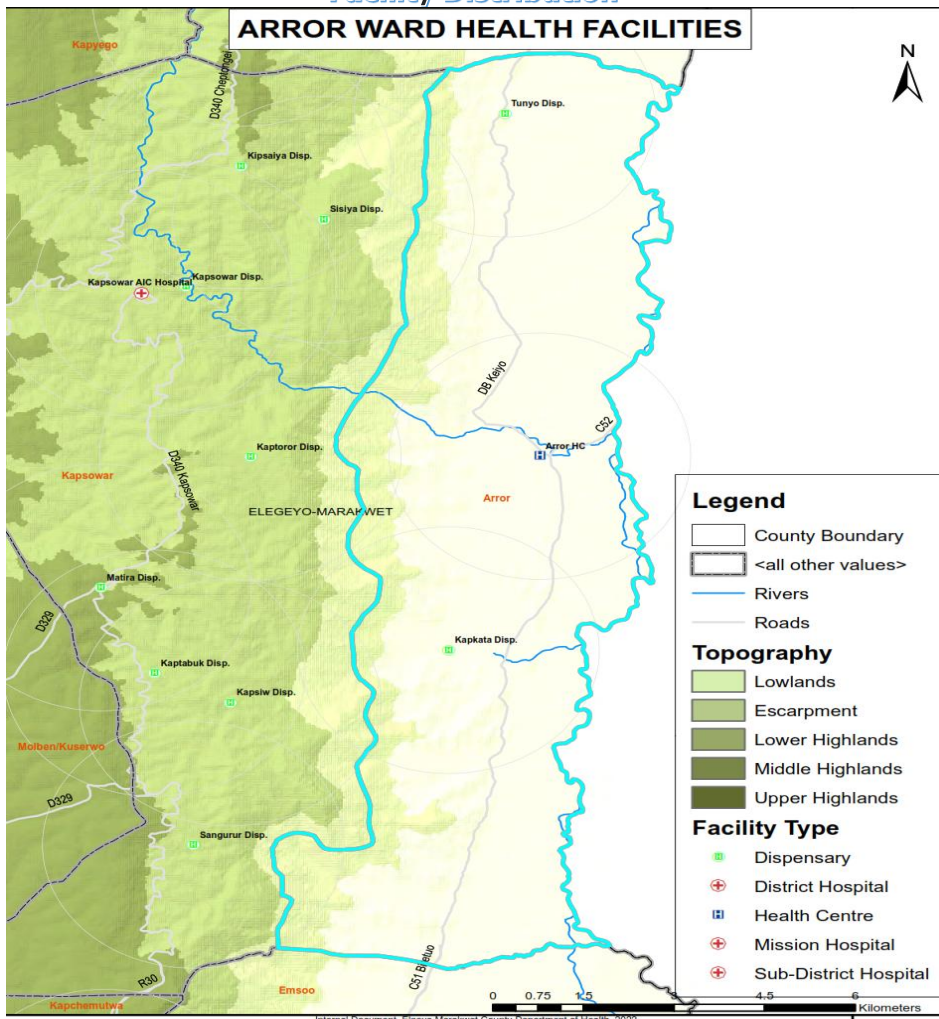
**11,567,400/-**

## List of Health Facilities

Health Facilities	Level
Kapchesewes Dispensary	2
Kapsiw Dispensary	2
Kapsowar (AIC) Hospital	3B
Kapsowar Health Centre	3
Kaptabuk Dispensary	2
Kaptoror Dispensary	2
Kipsaiya Dispensary	2
Matira Dispensary	2
Sangurur Dispensary	2
Sisiya Dispensary	2

## Facility Distribution

### ARROR WARD HEALTH FACILITIES



## OPD Attendance

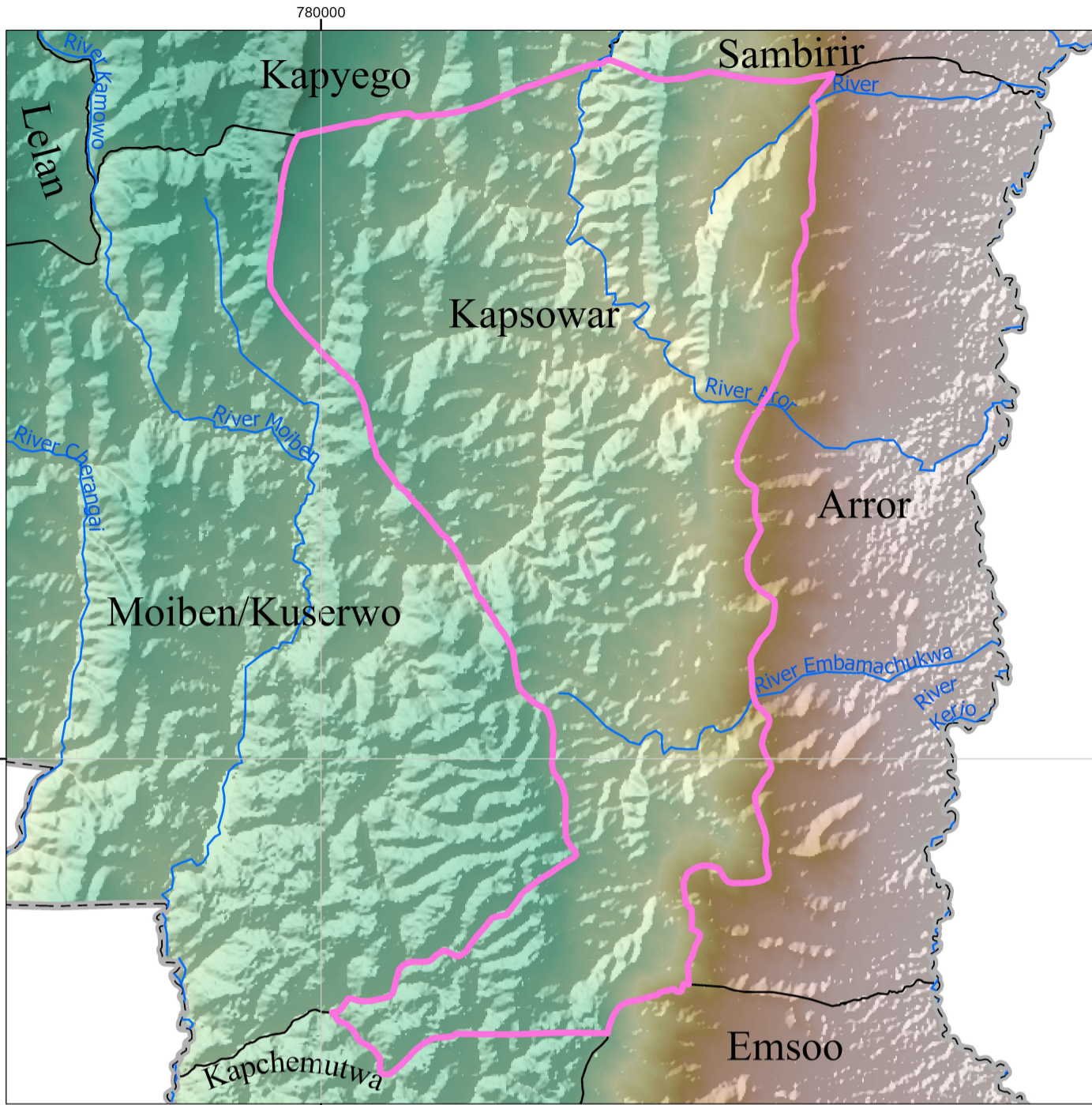
OPD attendance >5yrs Female	
OPD attendance >5yrs Male	
OPD Attendance <5yrs Female	
OPD Attendance <5yrs Male	
<b>Total OPD attendance</b>	



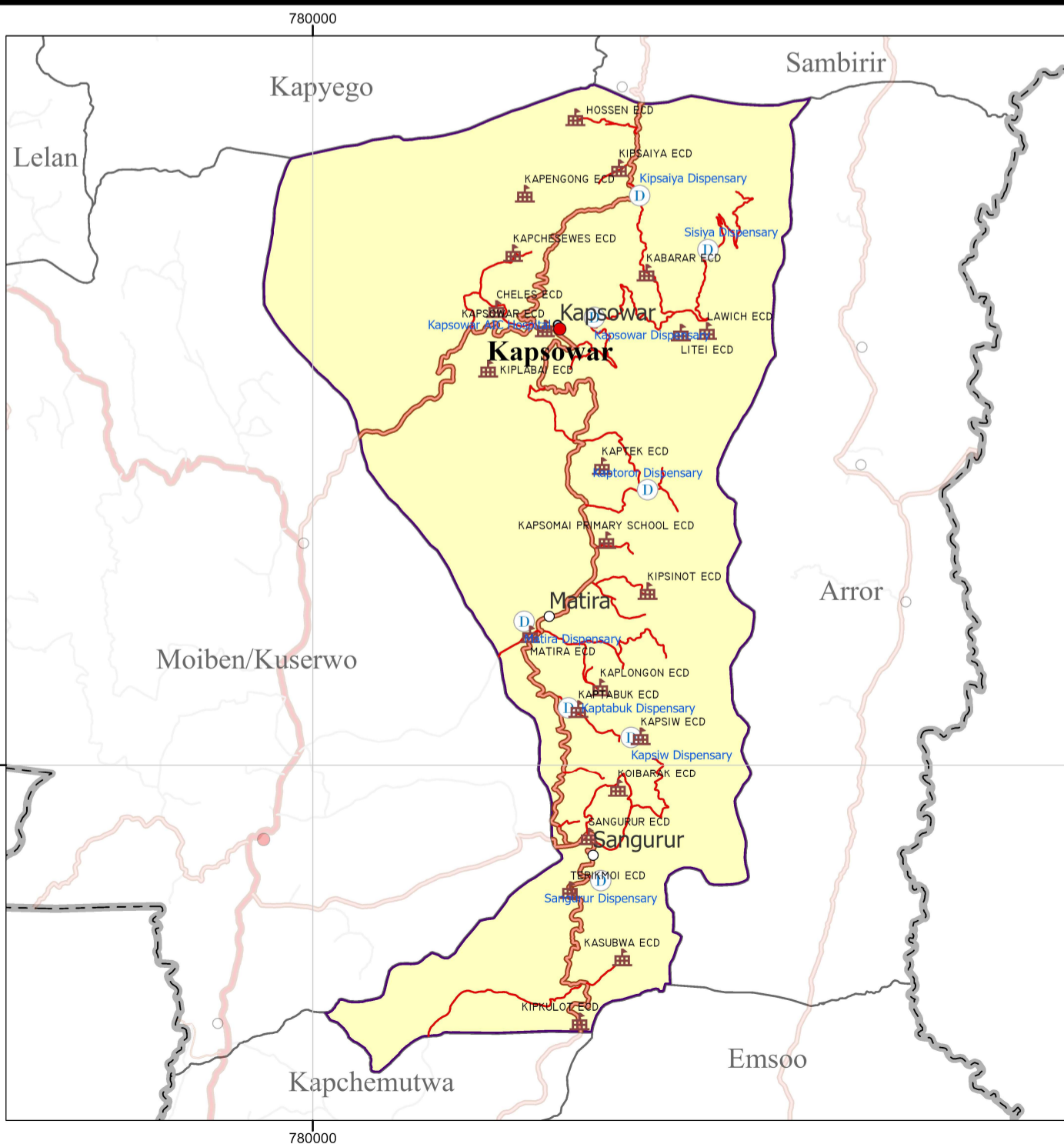
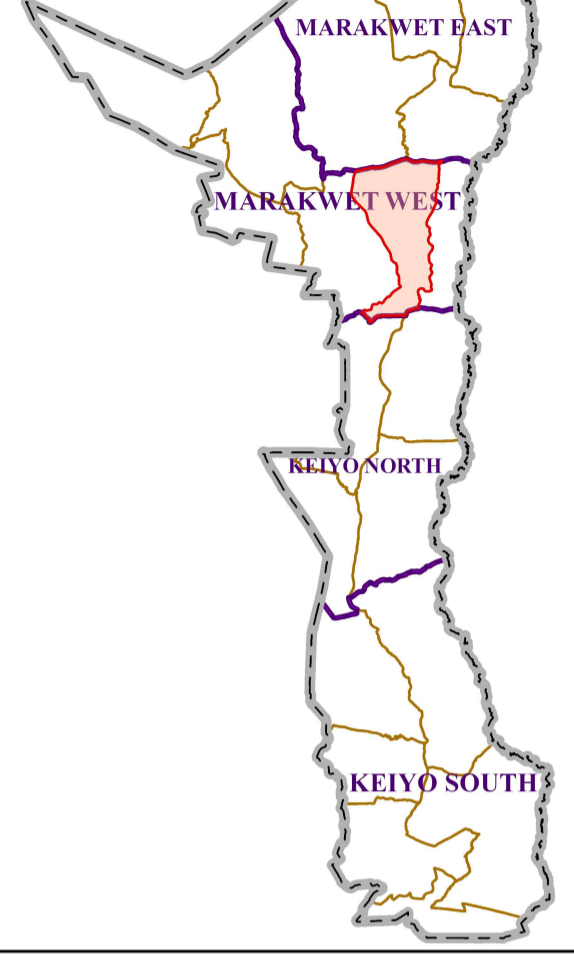
**POVERTY LEVEL**

**48%**

# KAPSOWAR WARD



## ELGEYO MARAKWET COUNTY



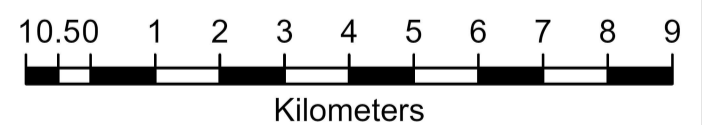
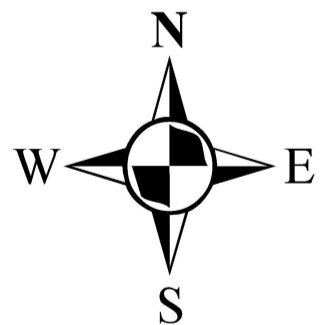
### Legend

#### Towns/ Urban Centres Roads

- County Headquarters
- Major Centre
- Other Centres
- ECD Centres (22)
- National Trunk Roads
- Primary Roads
- Secondary Roads
- Other Roads

#### Health Facilities

- County Hospital (0)
- Sub-County Hospital (0)
- Health Centre (0)
- Dispensary (8)
- Mission Hospital (1)
- EMC\_Wards
- EMC County Boundary
- Rivers
- EMC Elevation Value (m)



Scale: 1:117,000

SPATIAL REFERENCE  
 NAME: ARC 1960 UTM ZONE 36N  
 PCS: ARC 1960 UTM ZONE 36N  
 GCS: GCS ARC 1960  
 DATUM: ARC 1960  
 PROJECTION: TRANSVERSE MERCATOR  
 MAP UNITS: METER

EMC CARTOGRAPHY