

Sambirir Ward Health Profile

Situational Analysis

Sambirir Ward faces several healthcare challenges, reflected in various health indicators that require targeted interventions. The ward has notable issues, including a relatively low health insurance coverage (1.7%), moderate child immunization rates (35.2%), and high rates of common preventable diseases such as respiratory infections (21.7%) and malnutrition (17%). There are also substantial infrastructure gaps, particularly in terms of healthcare facilities and staff accommodation, which hamper the delivery of efficient healthcare services.

1. Health Insurance Coverage

Indicator: Health insurance coverage (Ward: 1.7%, County: 25%, Rank: 4)

Justification: Low health insurance coverage restricts access to quality healthcare services for the majority of the population.

Proposed Interventions:

- **SHA/SHIF for Vulnerable Groups:** Provision of SHA/SHIF cover for persons with disabilities (PWDs), the elderly, and vulnerable groups (Ksh. 1,000,000) to reduce out-of-pocket costs for healthcare.
- **Community Awareness Campaigns:** Mobilization and sensitization through CHVs to increase SHA/SHIF enrollment (Ksh. 2,500,000).
- **Incentives for SHA/SHIF Enrollment:** Performance-based incentives for CHVs (Ksh. 1,656,000) to enhance community uptake of health insurance.

2. Immunization Coverage

Indicator: Immunization coverage (Ward: 35.2%, County: 73.3%, Rank: 13)

Justification: Immunization rates in the ward fall short of the county's target, necessitating efforts to increase coverage.

Proposed Interventions:

- **Outreach Programs:** Facilitate mobile immunization clinics (Ksh. 2,500,000 annually) to improve accessibility in remote areas.
- **Automation of Immunization Records:** Procurement of ICT equipment (Ksh. 3,000,000) to streamline data management and improve follow-up for immunization.
- **CHV Capacity Building:** Training and empowering CHVs (Ksh. 2,500,000) to effectively promote immunization and track vaccination coverage.

3. Malaria Control

Indicator: Malaria incidence (Ward: 21.7%, County: 12%, Rank: 11)

Justification: Malaria continues to pose a significant threat in the ward, requiring immediate action to control its spread.

Proposed Interventions:

- **Malaria Control Programs:** Implementation of Indoor Residual Spray (IRS) and distribution of treated mosquito nets (Ksh. 2,500,000).

- **Procurement of Antimalarial Drugs:** Stocking up on malaria treatment drugs (Ksh. 2,500,000 annually).
- **X-ray Room Construction:** Establishment of diagnostic facilities to better identify malaria cases (Ksh. 4,000,000).

4. Nutrition

Indicator: Prevalence of stunting (Ward: 17%, County: 25.6%, Rank: 13)

Justification: High rates of stunting indicate inadequate nutrition, particularly in children under five years.

Proposed Interventions:

- **Nutrition Programs:** Nutrition education and interventions (Ksh. 3,750,000 annually) to improve dietary practices, especially for mothers and children.
- **Supplementary Feeding:** Distribution of nutrition supplements (Ksh. 1,500,000) to vulnerable populations, especially children under five and pregnant women.
- **CHV Training on Nutrition:** Capacity building for community health volunteers to address nutrition issues effectively (Ksh. 1,000,000).

5. Infrastructure and Equipment

Indicator: Health facility infrastructure and medical equipment needs are critical in Sambirir Ward, with several facilities facing resource constraints.

Proposed Interventions:

- **Procurement of Medical Equipment:** Various health centers in the ward, such as Chemworor Health Centre and Chesoi Health Centre, require the procurement of assorted medical equipment (Ksh. 2,000,000 to Ksh. 4,000,000 per facility).
- **Automation of Health Facilities:** Installation of ICT systems and Electronic Medical Records (EMR) in facilities like Chesoi Health Centre (Ksh. 3,000,000) to improve service delivery and data management.
- **Expansion and Construction Projects:**
 - **Facility Expansion:** Land expansion and construction of additional rooms such as laboratories, OPD blocks, and wards (Ksh. 4,000,000 to Ksh. 5,000,000 per facility).
 - **Staff Housing:** Construction of staff houses (Ksh. 4,000,000 to Ksh. 5,000,000) to improve retention and attract healthcare professionals.
 - **Fencing and Security:** Fencing of healthcare facilities such as Luguget and Chesoi (Ksh. 500,000 to Ksh. 1,000,000) to secure land and improve facility access.

6. Emergency and Transport Services

Proposed Interventions:

- **Ambulance Procurement:** Purchase of ambulances (Ksh. 6,000,000 to Ksh. 1,000,000) to enhance emergency response capacity across the ward.
- **Emergency Transfer Centre:** Provision of an Emergency Transfer Centre (Ksh. 2,500,000) to facilitate timely medical evacuations.

7. Water, Sanitation, and Hygiene (WASH)

Justification: Poor sanitation, including limited access to clean water, contributes to a high burden of preventable diseases such as diarrhea.

Proposed Interventions:

- **Piped Water and Water Storage Tanks:** Provision of piped water connections and installation of water tanks (Ksh. 500,000 to Ksh. 1,000,000 per facility).
- **Septic Tank and Waste Disposal:** Construction of septic tanks (Ksh. 1,000,000) at facilities like Chesetan and Luguget dispensaries to improve sanitation and waste management.
- **Construction of Toilets:** Building more latrines and toilets in health facilities and communities (Ksh. 300,000 each).



SAMBIRIR WARD HEALTH PROFILE

DEPARTMENT OF HEALTH SERVICES

POPULATION
25,559

MALE
12,422

FEMALE
13,136

HOUSEHOLDS
5,949

Key Indicators

Indicator	Ward	County	Rank
Births attended by skilled health staff	38.8%	67.5%	11
Incidence of diarrhoeal diseases	15.3%	8.4%	6
Proportion of children fully immunized	29.9%	73.3%	19
Latrine Coverage	72%	73.9%	14
Prevalence of Stunting	24.5%	25.6%	19
Prevalence of Wasting	4.9%	5.1%	19
Handwashing Coverage	37%	43.4%	14
Malaria incidence per 1,000 population	3.6%	21.6%	10
Eye diseases morbidity rate	1.7%	3.2%	
Modern contraceptive prevalence rate	27.5%	35.2%	13
OPD Utilization Rate	1.8	1.9%	6
Proportion covered by a health insurance	17%	25%	11
Teenage pregnancy rate (10-19 years)	21.7%	18.6%	8

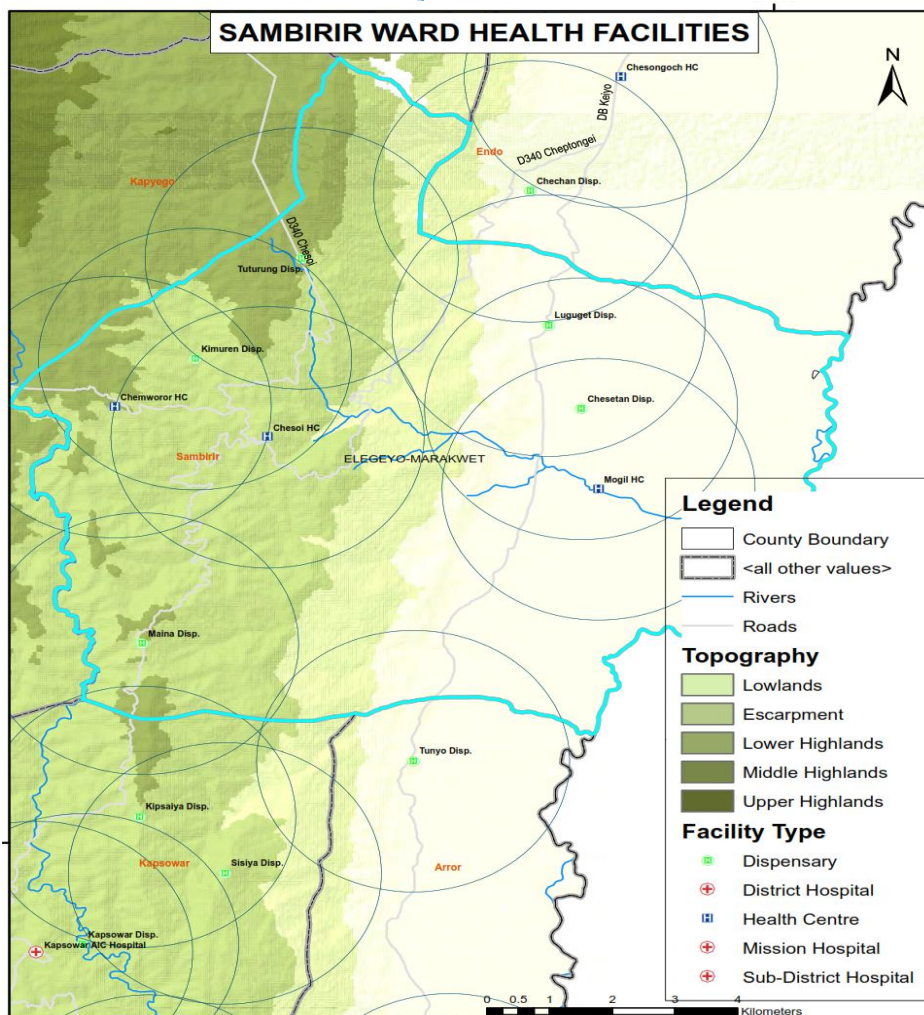
Top Diseases

Disease	%	Cost
URTIs	69.0	5,606,250/-
Diarrhoea	9.8	477,450/-
Disease of the skin	8.6	417,600/-
Pneumonia	5.3	778,050/-
Typhoid fever	2.1	1,219,750/-
Urinary Tract Infection	2.0	358,600/-
Eye Infections	1.7	56,600/-
Malaria	1.0	49,600/-
Intestinal worms	0.5	15,200/-

Burden of Preventable Diseases

64.8 **8,979,100/-**

Facility Distribution



List of Health Facilities

Health Facilities	Level
Chemworor Health Centre	3
Chesetan Dispensary	2
Chesiyo Dispensary	2
Chesoi Health Centre	3
Kimuren Dispensary	2
Luguget Dispensary	2
Maina Dispensary	2
Mogil Health Centre	3
Tuturung Dispensary	2

OPD Attendance

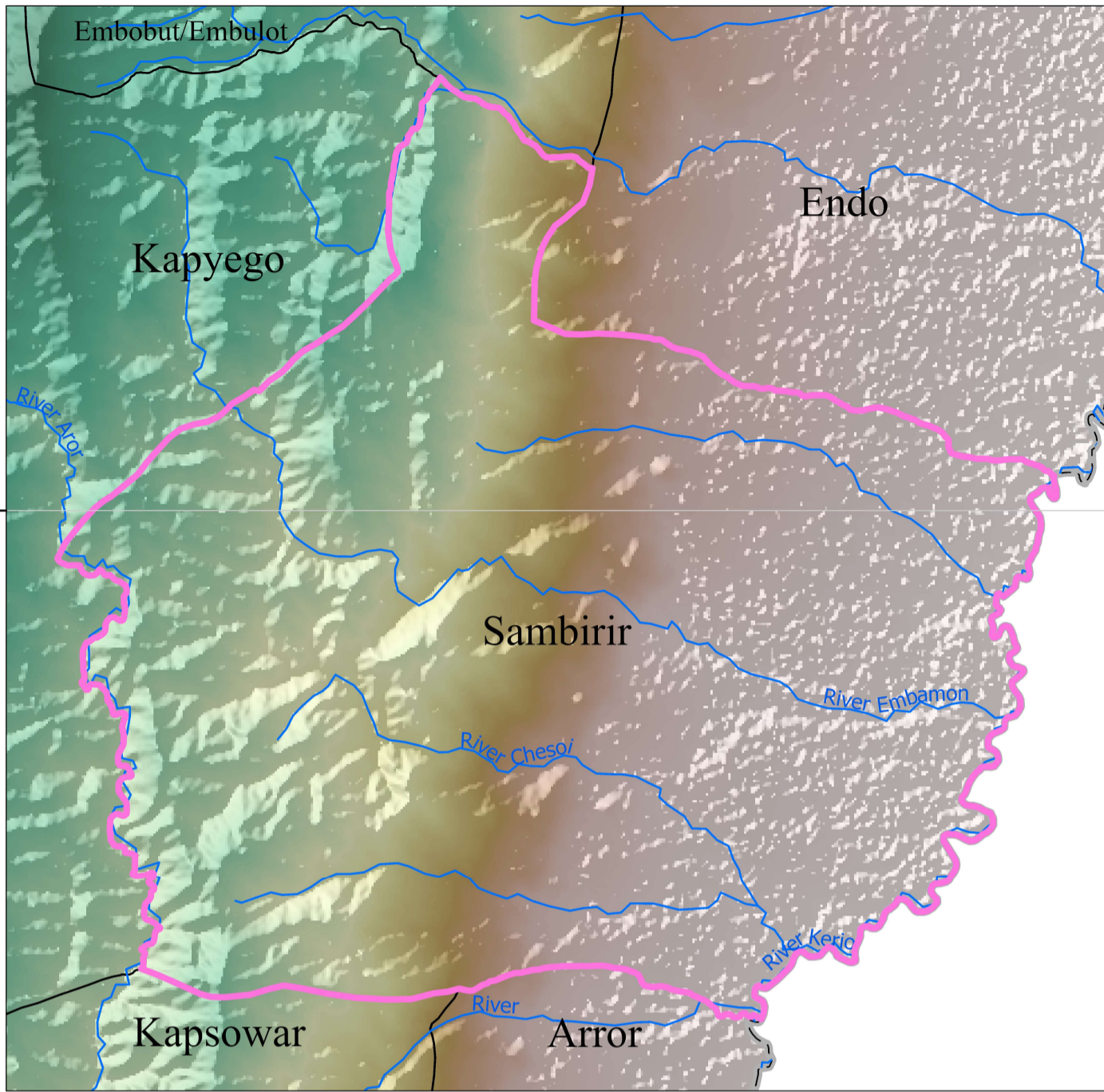
OPD attendance >5yrs Female	23,637
OPD attendance >5yrs Male	16,750
OPD Attendance <5yrs Female	5,215
OPD Attendance <5yrs Male	5,285
Total OPD attendance	50,887



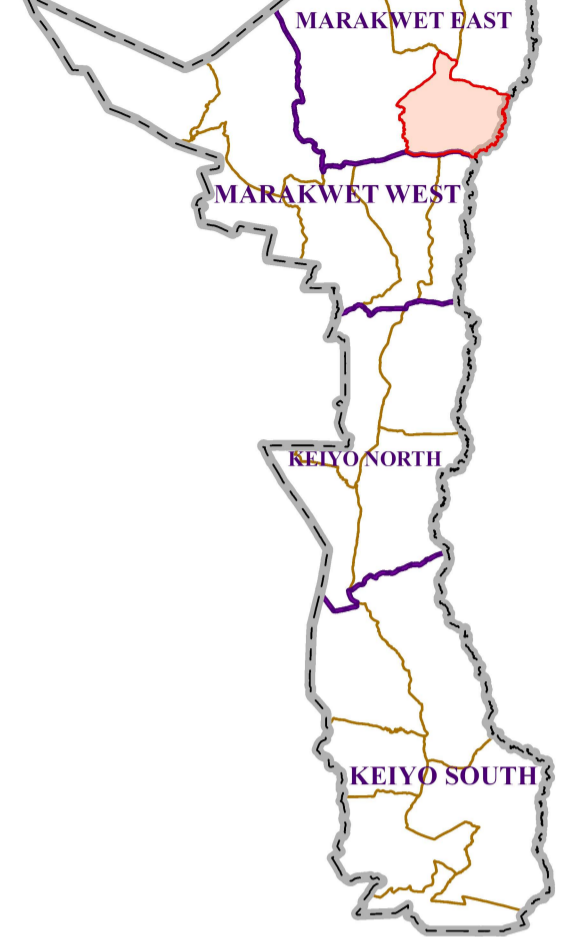
POVERTY LEVEL

40.9%

SAMBIRIR WARD



ELGEYO MARAKWET COUNTY



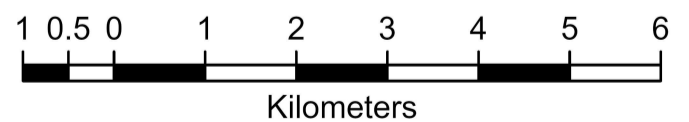
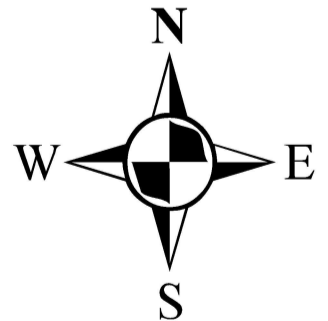
Legend

Towns/ Urban Centres Roads

- County Headquarters
- Major Centre
- Other Centres
- ECD Centres (23)
- National Trunk Roads
- Primary Roads
- Secondary Roads
- Other Roads

Health Facilities

- County Hospital (0)
- Sub-County Hospital (0)
- Health Centre (3)
- Dispensary (5)
- Mission Hospital (0)
- EMC_Wards
- EMC County Boundary
- Rivers
- EMC Elevation Value (m)
- 3488
- 914



Scale: 1:83,000

SPATIAL REFERENCE
 NAME: ARC 1960 UTM ZONE 36N
 PCS: ARC 1960 UTM ZONE 36N
 GCS: GCS ARC 1960
 DATUM: ARC 1960
 PROJECTION: TRANSVERSE MERCATOR
 MAP UNITS: METER

EMC CARTOGRAPHY