

Kaptarakwa Ward Health Profile

Situational Analysis

Kaptarakwa Ward faces several healthcare challenges, as evidenced by its health indicators. The ward ranks poorly in skilled birth attendance (13.5%), and the coverage for health insurance (10%) is low, which severely limits access to essential healthcare services. The high incidence of diarrhoeal diseases (0.5%), stunting (24.6%), and wasting (4.9%) calls for targeted interventions to improve nutritional health and reduce preventable diseases. Despite relatively better rankings in latrine coverage (81%) and immunization rates (55.5%), issues such as poor OPD utilization (0.6%) and the low handwashing coverage (30%) need to be addressed through community engagement and improved health infrastructure.

Proposed Strategies and Interventions

I. Skilled Birth Attendance and Maternity Services

Indicator: Births attended by skilled health staff (13.5%)

- **Justification:** The low percentage of skilled birth attendance highlights a need for improved maternal health services.
- **Proposed Interventions:**
 - **Construction of Modern Maternity (Ksh. 3,000,000)** at Kaptarakwa Sub-County Hospital (SCH) to ensure safe deliveries.
 - **Procurement of Assorted Medical Equipment (Ksh. 6,000,000)** to enhance maternal care, including delivery tables and newborn care kits.
 - **Mama Penda Kits (Ksh. 2,500,000 annually)** to promote facility-based deliveries.
 - **Performance-based Incentives for CHPs (Ksh. 1,920,000 annually)** to encourage maternal health awareness and referral to skilled birth services.

2. Immunization Coverage

Indicator: Proportion of children fully immunized (55.5%)

- **Justification:** Despite being relatively better, immunization rates fall below national targets, indicating a need for targeted efforts.
- **Proposed Interventions:**
 - **Outreach Programs (Ksh. 2,500,000 annually)** to increase immunization coverage in remote areas.
 - **Automation of Immunization Data (Ksh. 3,000,000)** to enhance tracking and follow-up, ensuring no child is missed.
 - **Capacity Building for CHPs (Ksh. 2,500,000 annually)** to improve community-level immunization efforts.

3. Water, Sanitation, and Hygiene (WASH)

Indicators:

- **Latrine Coverage (81%)**
- **Handwashing Coverage (30%)**
- ****Diarrheal Disease Incidence (0.5%)**
- **Justification:** High diarrheal disease prevalence and low handwashing coverage underscore the need for improved WASH infrastructure.
- **Proposed Interventions:**
 - **Construction of Toilets and Placenta Pits (Ksh. 300,000 each)** at dispensaries to improve sanitation.
 - **Piped Water Connections (Ksh. 500,000 per facility)** to ensure consistent access to clean water.
 - **Procurement of Water Tanks (Ksh. 300,000 each)** to support water storage in underserved areas.

4. Malaria Control

Indicator: Malaria incidence per 1,000 population (1.5%)

- **Justification:** Malaria is a significant concern and requires urgent intervention to reduce morbidity and mortality.
- **Proposed Interventions:**
 - **Malaria Control Programs (Ksh. 2,500,000)**, including indoor residual spraying (IRS) and distribution of mosquito nets.
 - **Procurement of Antimalarial Drugs (Ksh. 2,500,000 annually)** to ensure adequate stock for effective treatment.
 - **Construction of X-ray Room (Ksh. 4,000,000)** at Kaptarakwa SCH for effective malaria diagnosis.

5. Nutrition Interventions

Indicator: Prevalence of Stunting (24.6%)

- **Justification:** The high stunting rate requires focused nutrition programs to ensure better growth and development of children.
- **Proposed Interventions:**
 - **Nutrition Programs (Ksh. 3,750,000 annually)** to educate communities on proper feeding practices.
 - **Procurement of Nutrition Supplements (Ksh. 2,000,000 annually)** for children under five years and pregnant women.
 - **Training of Health Staff on Nutrition (Ksh. 1,500,000)** to improve diagnosis and management of malnutrition.

6. Teenage Pregnancy and Reproductive Health

Indicator: Teenage Pregnancy Rate (7.4%)

- **Justification:** The high teenage pregnancy rate signals the need for comprehensive reproductive health education and services.
- **Proposed Interventions:**
 - **Support for Reproductive Health Outreach Programs (Ksh. 2,500,000 annually)** to target adolescents and young women with reproductive health education.
 - **Procurement of Mama Penda Kits (Ksh. 500,000 annually)** to promote safe motherhood among young women.
 - **Community Health Sensitization (Ksh. 1,200,000)** through CHPs to reduce teenage pregnancies.

7. Health Insurance Coverage

Indicator: Proportion covered by health insurance (10%)

- **Justification:** The low health insurance coverage highlights the need for targeted interventions to increase financial access to healthcare.
- **Proposed Interventions:**
 - **SHA/SHIF Coverage for Vulnerable Groups (Ksh. 1,000,000)**, including PWDs, PLWHIV, elderly, and CHPs.
 - **Community Awareness Programs (Ksh. 2,500,000)** to encourage enrollment in the SHA/SHIF scheme.

8. OPD Utilization Rate

Indicator: OPD Utilization Rate (0.6%)

- **Justification:** The low OPD utilization rate suggests barriers to healthcare access and health-seeking behaviors.
- **Proposed Interventions:**
 - **Construction of OPD Blocks (Ksh. 3,000,000 each)** at major dispensaries to improve access to outpatient services.
 - **Procurement of Drugs (Ksh. 2,500,000 annually)** to ensure availability of essential medicines.
 - **Fencing and Infrastructure Improvements (Ksh. 500,000)** to ensure safety and comfort for patients.

9. Emergency Services

- **Provision for an Emergency Transfer Centre (Ksh. 2,500,000)** at Kaptarakwa SCH to facilitate quick and effective patient transfer in emergencies.
- **Procurement of Motorbikes for CUs (Ksh. 1,800,000)** to ensure rapid emergency responses in the community.

10. Staffing and Capacity Building

- **Recruitment of 2 Health Interns (Ksh. 2,400,000 annually)** to support the healthcare system.
- **Procurement of CHPs Kits (Ksh. 2,400,000)** to support community health volunteers in their outreach programs.



KAPTARAKWA WARD HEALTH PROFILE

DEPARTMENT OF HEALTH SERVICES

POPULATION
18,157

MALE
9,106

FEMALE
9,051

HOUSEHOLDS
4,105

Key Indicators

Indicator	Ward	County	Rank
Births attended by skilled health staff	13.5%	67.5%	18
Incidence of diarrhoeal diseases	0.5%	8.4%	19
Proportion of children fully immunized	55.5%	73.3%	11
Latrine Coverage	81%	73.9%	7
Prevalence of Stunting	24.6%	25.6%	16
Prevalence of Wasting	4.9%	5.1%	16
Handwashing Coverage	30%	43.4%	18
Malaria incidence per 1,000 population	1.5%	21.6%	13
Eye diseases morbidity rate	3%	3.2%	6
Modern contraceptive prevalence rate	28.5%	35.2%	12
OPD Utilization Rate	0.6	1.9%	20
Proportion covered by a health insurance	10%	25%	18
Teenage pregnancy rate (10-19 years)	7.4%	18.6%	19

Top Diseases

Disease	%	Cost
URTIs	76.0	2,488,000/-
Disease of the skin	9.3	180,750/-
Diarrhoea	4.6	88,950/-
Pneumonia	4.2	243,900/-
Eye Infections	3.0	39,400/-
Urinary Tract Infection	1.8	125,950/-
Typhoid fever	0.5	15,750/-
Intestinal worms	0.4	5,200/-
Malaria	0.3	8,400/-

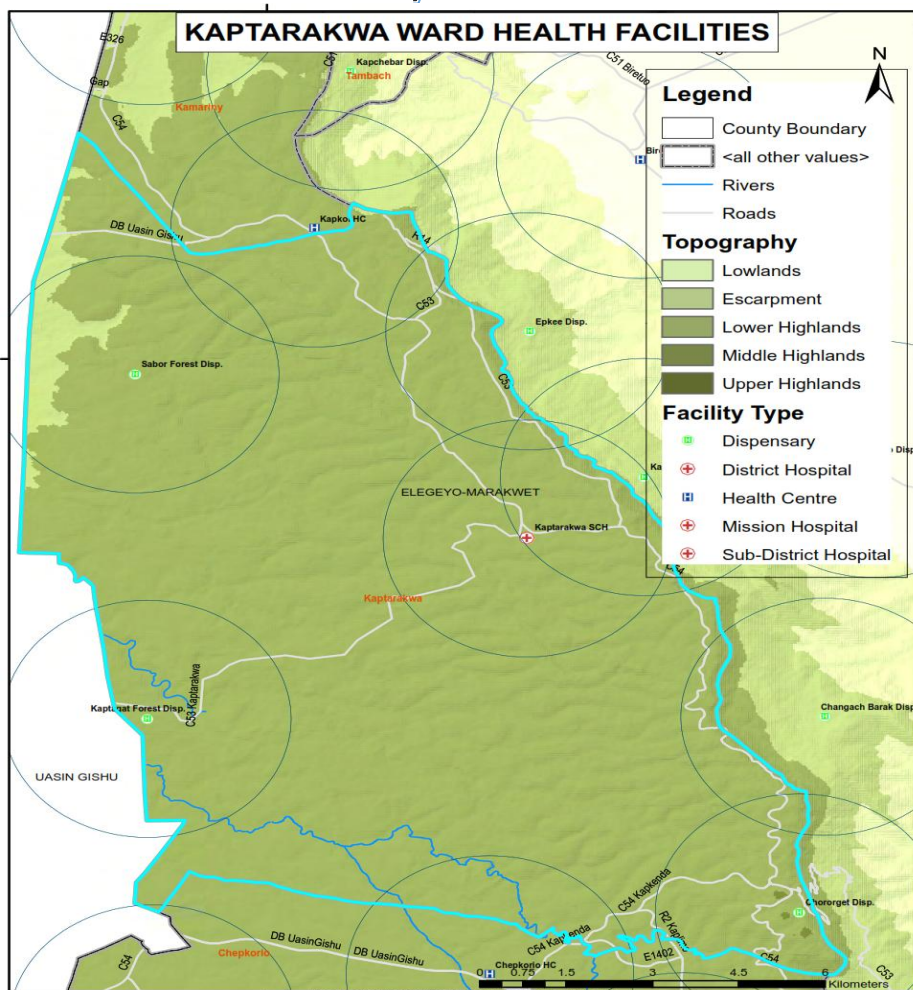
Burden of Preventable Diseases

71% **3,188,400/-**

List of Health Facilities

Health Facilities	Level
Chororget Dispensary	2
Kabalborokwa Dispensary	2
Kaptagat Forest Dispensary	2
Kaptarakwa Sub-County Hospital	3
Kiptulos Dispensary	2
Sabor Forest Dispensary	2

Facility Distribution



OPD Attendance

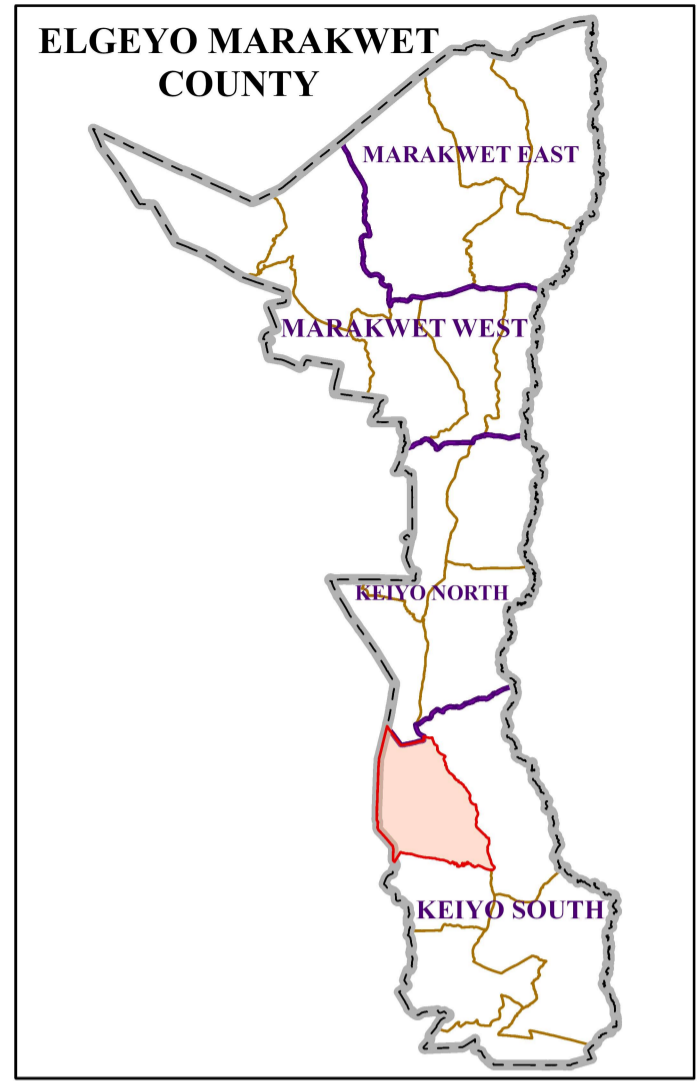
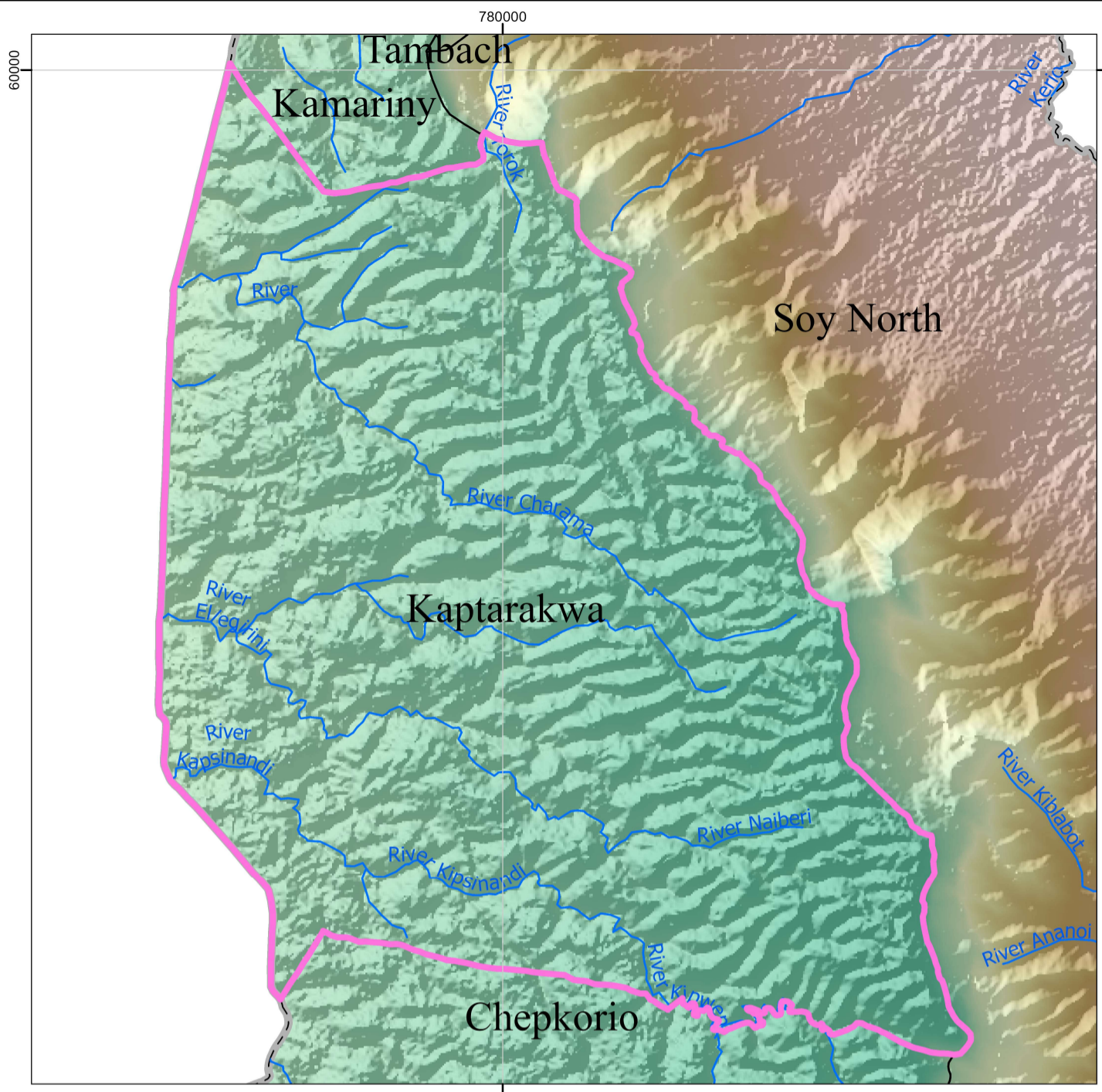
OPD attendance >5yrs Female	8,087
OPD attendance >5yrs Male	5,522
OPD Attendance <5yrs Female	2,351
OPD Attendance <5yrs Male	2,237
Total OPD attendance	18,197



POVERTY LEVEL

41.2%

KAPTARAKWA WARD



Legend

Towns/ Urban Centres Roads

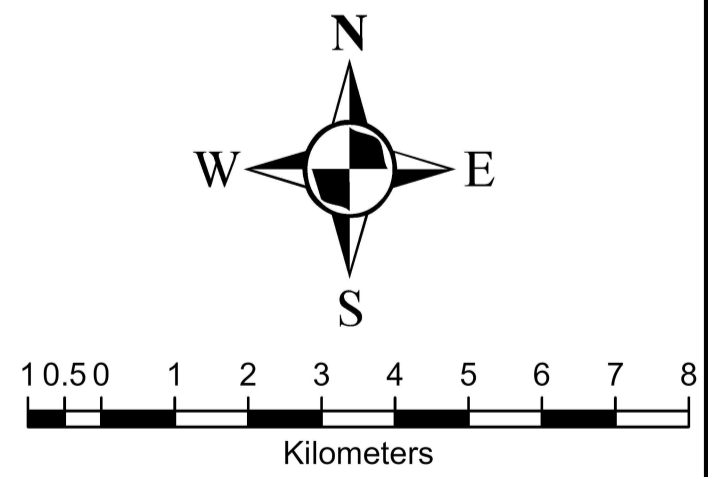
- County Headquarters
- Major Centre
- Other Centres
- 🏠 ECD Centres (19)
- 🏥 National Trunk Roads
- 🛣️ Primary Roads
- 🛣️ Secondary Roads
- 🛣️ Other Roads
- 🏠 EMC_Wards
- 🗺️ EMC County Boundary

Health Facilities

- H County Hospital (0)
- H Sub-County Hospital (1)
- h Health Centre (1)
- D Dispensary (3)
- o Mission Hospital (0)

Other Symbols

- 🌊 Rivers
- 📏 EMC Elevation Value (m)
- 3488
- 914



SPATIAL REFERENCE
 NAME: ARC 1960 UTM ZONE 36N
 PCS: ARC 1960 UTM ZONE 36N
 GCS: GCS ARC 1960
 DATUM: ARC 1960
 PROJECTION: TRANSVERSE MERCATOR
 MAP UNITS: METER