

Kapchemutwa Ward Health Profile

Situational Analysis

Kapchemutwa Ward faces a range of health challenges, as indicated by its health metrics. Despite positive performance in some areas such as skilled birth attendance (98%), the ward has significant gaps in immunization rates (49.6%), the prevalence of stunting (32.7%), and wasting (6.5%). The ward also experiences challenges in malaria incidence (11.5%), and high eye disease morbidity (6.9%). The health infrastructure is being expanded, but gaps remain in service delivery, including a need for more comprehensive maternal health services, sanitation, and emergency care. Key Interventions:

1. Skilled Birth Attendance and Maternity Services

- **Indicator:** Births attended by skilled health staff (Ward: 98%, County: 67.5%, Rank: 2)
- **Justification:** Although the ward has relatively high skilled birth attendance, improving maternity services is key to sustaining this performance and reducing maternal and infant mortality.
- **Proposed Interventions:**
 - **Construction of an Emergency Maternity Unit** (Ksh. 3,000,000) at Assumption Sisters Dispensary to improve maternal care.
 - **Procurement of Assorted Medical Equipment** (Ksh. 3,000,000) including delivery sets and diagnostic tools to support maternity services.
 - **Procurement of Mama Penda Kits** (Ksh. 500,000 annually) to encourage facility-based deliveries.
 - **CHPs Performance-Based Incentives** (Ksh. 12,000,000 annually) to enhance outreach and maternal health education.

2. Immunization Coverage

- **Indicator:** Proportion of children fully immunized (Ward: 49.6%, County: 73.3%, Rank: 14)
- **Justification:** Immunization rates are below the national target, with a need to boost coverage to prevent outbreaks of vaccine-preventable diseases.
- **Proposed Interventions:**
 - **Mobile Immunization Outreaches** (Ksh. 2,500,000 annually) to ensure wider access to vaccines in rural areas.
 - **Automation and ICT Equipment** (Ksh. 3,000,000) to streamline immunization data and follow-ups.
 - **Training and Capacity Building of CHPs** (Ksh. 2,500,000) to improve outreach efforts.

3. Water, Sanitation, and Hygiene (WASH)

- **Indicators:**
 - Latrine Coverage (Ward: 90%, County: 73.9%, Rank: 1)
 - Handwashing Coverage (Ward: 35%, County: 43.4%, Rank: 15)
 - Diarrheal Disease Incidence (Ward: 14.2%, County: 8.4%, Rank: 8)
- **Justification:** Improving sanitation and hygiene is critical to reducing diarrheal diseases and maintaining high latrine coverage.

- **Proposed Interventions:**
 - **Construction of Toilets** (Ksh. 300,000) at various dispensaries, including Assumption Sisters Dispensary and Kapkessum Dispensary.
 - **Provision of Handwashing Stations** (Ksh. 500,000) to encourage hygiene practices.
 - **Supply of Mosquito Nets** (Ksh. 500,000) to prevent malaria, particularly targeting mothers and infants.

4. Malaria Control

- **Indicator:** Malaria incidence per 1,000 population (Ward: 11.5%, County: 21.6%, Rank: 8)
- **Justification:** While malaria incidence is moderate, it remains a major public health issue in the ward.
- **Proposed Interventions:**
 - **Malaria Control Programs** (Ksh. 2,500,000) including Indoor Residual Spraying (IRS) and distribution of mosquito nets.
 - **Procurement of Malaria Treatment Drugs** (Ksh. 2,500,000 annually).

5. Child Nutrition and Stunting

- **Indicator:** Prevalence of Stunting (Ward: 32.7%, County: 25.6%, Rank: 1)
- **Justification:** High stunting rates indicate malnutrition and the need for nutrition-focused interventions.
- **Proposed Interventions:**
 - **Nutrition Intervention Programs** (Ksh. 3,750,000 annually) to reduce stunting, including feeding programs and nutrition education.
 - **Procurement of Nutrition Supplements** (Ksh. 500,000) for children and pregnant mothers.
 - **Capacity Building of Health Workers** (Ksh. 1,500,000) on nutrition management.

6. Teenage Pregnancy

- **Indicator:** Teenage Pregnancy Rate (Ward: 12.2%, County: 18.6%, Rank: 16)
- **Justification:** Teenage pregnancy rates in the ward remain high, necessitating a concerted effort to prevent and manage this issue.
- **Proposed Interventions:**
 - **Reproductive Health Outreaches** (Ksh. 2,500,000 annually) focusing on teen health, contraceptive access, and family planning.
 - **Community Sensitization Programs** (Ksh. 1,200,000) through CHPs to reduce teenage pregnancies.
 - **Provision of Contraceptive Services** and awareness campaigns in schools and communities.

7. OPD Utilization and Healthcare Access

- **Indicator:** OPD Utilization Rate (Ward: 2.0, County: 1.9%, Rank: 3)
- **Justification:** The high OPD utilization indicates a relatively good health-seeking behavior but also highlights the need for continued access improvements.
- **Proposed Interventions:**
 - **Construction of OPD Blocks** (Ksh. 4,000,000) at Kapkessum Dispensary and Msekekwa Health Centre.
 - **Renovation of OPD Wing** (Ksh. 3,000,000) at Komba Belio Dispensary to accommodate higher patient numbers.
 - **Procurement of Essential Drugs** (Ksh. 2,500,000 annually) to ensure treatment availability.

8. Health Insurance Coverage

- **Indicator:** Proportion covered by health insurance (Ward: 30%, County: 25%, Rank: 2)
- **Justification:** High health insurance coverage indicates a positive trend but efforts must be sustained and expanded, especially for vulnerable groups.
- **Proposed Interventions:**
 - **SHA/SHIF Registration for Vulnerable Groups** (Ksh. 1,000,000) to increase health insurance coverage.
 - **Community Outreach Programs** to promote SHA/SHIF enrolment, especially for the elderly, PWDs, and low-income households.

9. Infrastructure and Emergency Services

- **Proposed Interventions:**
 - **Construction of Staff Quarters** (Ksh. 3,000,000) to attract and retain skilled healthcare workers in the ward.
 - **Provision for Emergency Transfer Centre** (Ksh. 2,500,000) to improve emergency response and patient transport.
 - **Emergency Motorbikes for CHPs** (Ksh. 1,500,000) to support outreach services and referrals.



KAPCHEMUTWA WARD HEALTH PROFILE

DEPARTMENT OF HEALTH SERVICES

POPULATION
26,811

MALE
13,584

FEMALE
13,226

HOUSEHOLDS
5,454

Key Indicators

Indicator	Ward	County	Rank
Births attended by skilled health staff	98%	67.5%	2
Incidence of diarrhoeal diseases	14.2%	8.4%	8
Proportion of children fully immunized	49.6%	73.3%	14
Latrine Coverage	90%	73.9%	1
Prevalence of Stunting	32.7%	25.6%	1
Prevalence of Wasting	6.5%	5.1%	1
Handwashing Coverage	35%	43.4%	15
Malaria incidence per 1,000 population	11.5%	21.6%	8
Eye diseases morbidity rate	6.9%	3.2%	1
Modern contraceptive prevalence rate	26.2%	35.2%	15
OPD Utilization Rate	2.0	1.9%	3
Proportion covered by a health insurance	30%	25%	2
Teenage pregnancy rate (10-19 years)	12.2%	18.6%	16

Top Diseases

Disease	%	Cost
URTIs	51.4	5,899,500/-
Disease of the skin	13.3	912,000/-
Diarrhoea	5.0	342,300/-
Pneumonia	12.0	2,480,400/-
Urinary Tract Infection	4.8	1,223,200/-
Eye Infections	6.9	316,100/-
Malaria	3.2	160,200/-
Typhoid fever	1.0	824,250/-
Intestinal worms	2.5	113,200/-

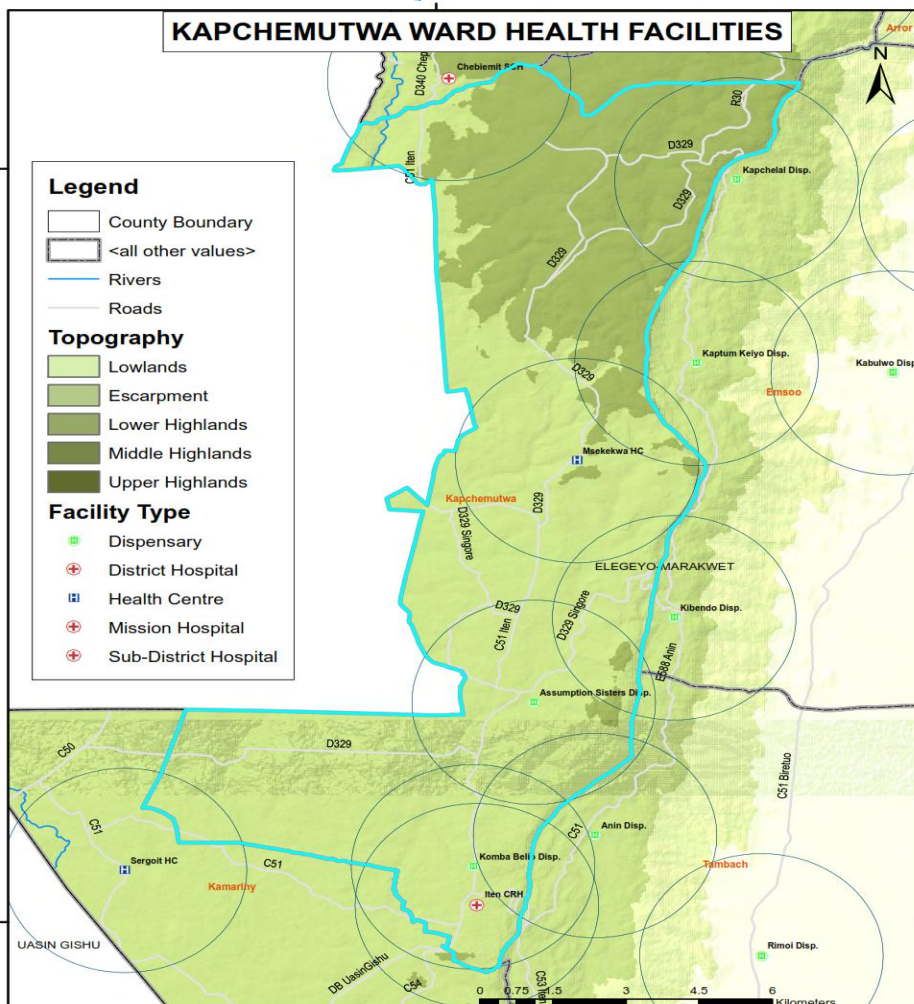
Burden of Preventable Diseases

35% **12,272,050/-**

List of Health Facilities

Health Facilities	Level
Assumption Sisters Dispensary	2
Iten County Referral Hospital	4
Kapkesum Dispensary	2
Komba Belio Dispensary	2
Msekekwa Health Centre	3

Facility Distribution



OPD Attendance

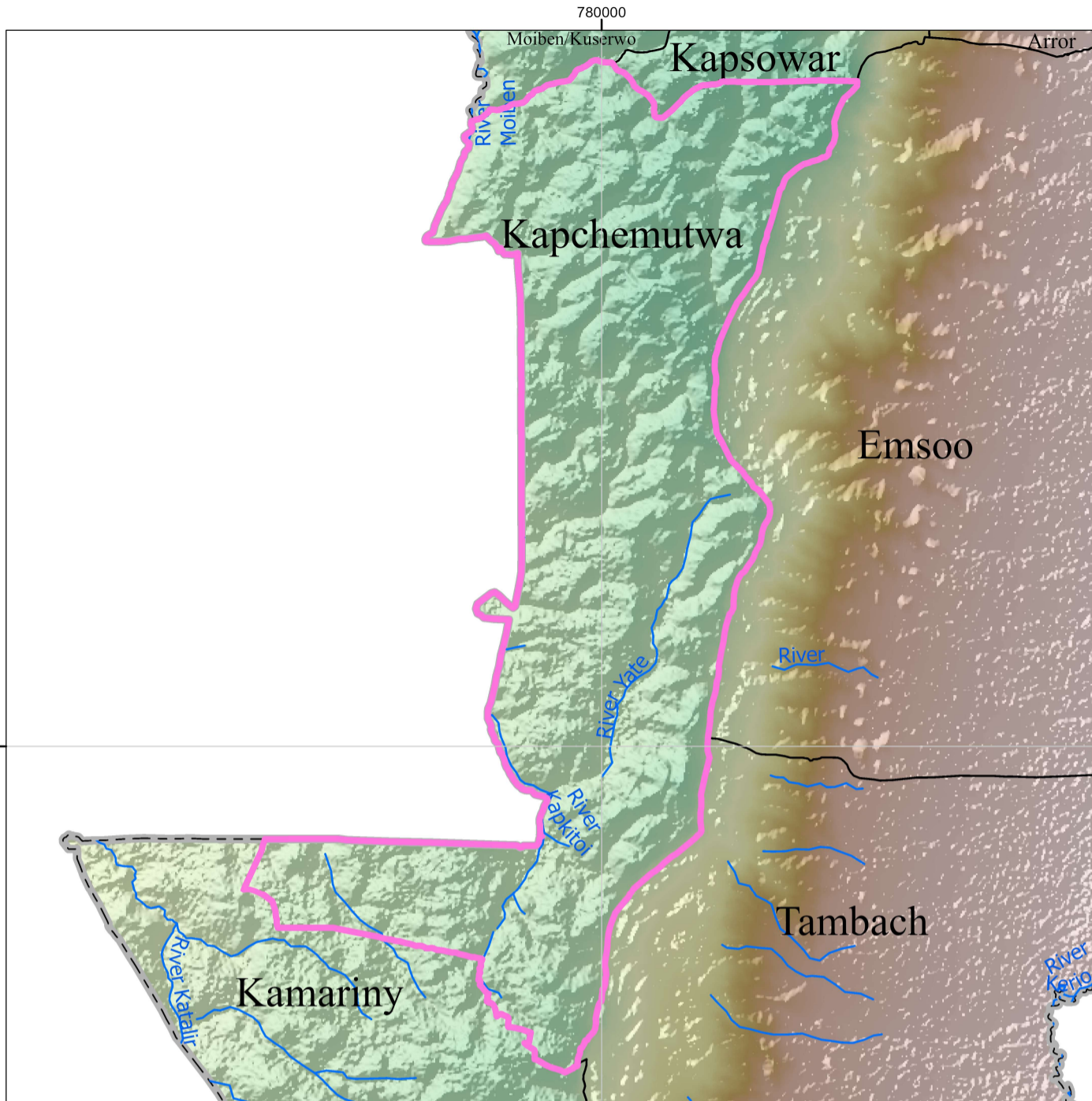
OPD attendance >5yrs Female	65,442
OPD attendance >5yrs Male	45,192
OPD Attendance <5yrs Female	11,647
OPD Attendance <5yrs Male	10,828
Total OPD attendance	133,109



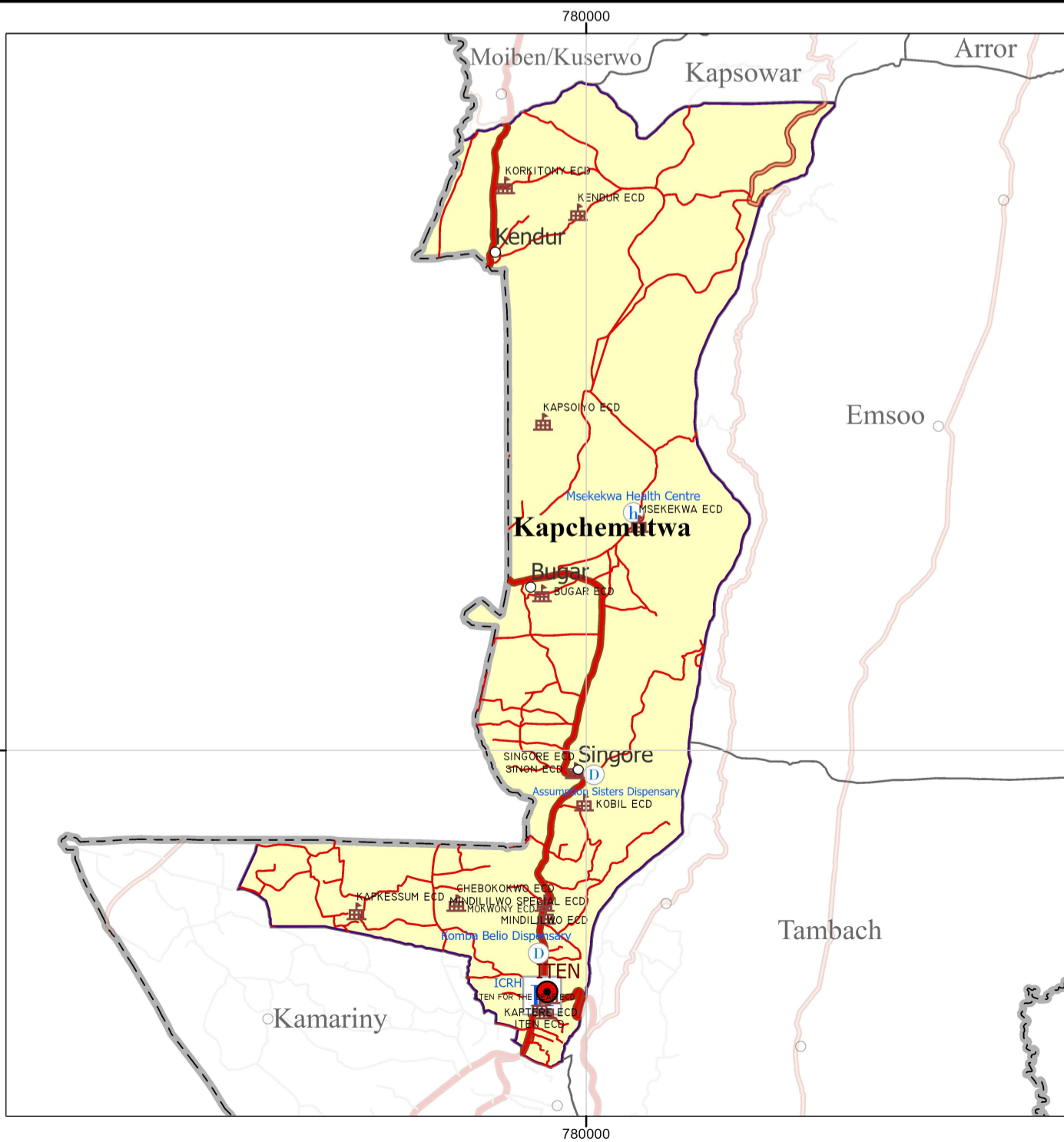
POVERTY LEVEL

55%

KAPCHEMUTWA WARD



ELGEYO MARAKWET COUNTY



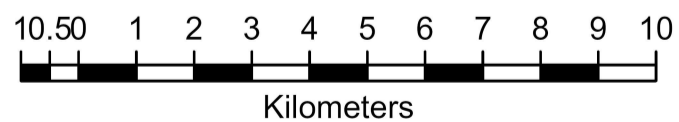
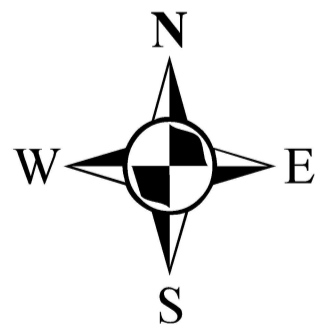
Legend

Towns/ Urban Centres Roads

- County Headquarters
- Major Centre
- Other Centres
- ECD Centres (16)
- National Trunk Roads
- Primary Roads
- Secondary Roads
- Other Roads

Health Facilities

- County Hospital (1)
- Sub-County Hospital (0)
- Health Centre (1)
- Dispensary (2)
- Mission Hospital (0)
- EMC_Wards
- EMC County Boundary
- Rivers
- EMC Elevation Value (m)
 - 3488
 - 914



Scale: 1:131,000

SPATIAL REFERENCE
 NAME: ARC 1960 UTM ZONE 36N
 PCS: ARC 1960 UTM ZONE 36N
 GCS: GCS ARC 1960
 DATUM: ARC 1960
 PROJECTION: TRANSVERSE MERCATOR
 MAP UNITS: METER

EMC CARTOGRAPHY