

# Kamariny Ward Health Profile

## Situational Analysis

Kamariny Ward presents a complex health landscape, with several key health indicators reflecting areas of concern. Despite some positive results, such as the high percentage of births attended by skilled health staff (97.5%) and relatively good coverage of latrines (87%), the ward faces persistent health challenges. Key issues include the high prevalence of stunting (26%), high teenage pregnancy rates (25.1%), and low immunization coverage (50.8%). The need for improvements in the healthcare infrastructure, sanitation facilities, and access to emergency services are also evident from the available data. The following strategies and interventions are recommended to address these challenges:

---

### I. Skilled Birth Attendance and Maternity Services

**Indicator:** Births attended by skilled health staff (Ward: 97.5%, County: 67.5%, Rank: 3)

- **Justification:** Kamariny Ward has a high percentage of skilled birth attendance, but ensuring continued access to quality maternal care is critical, particularly in rural areas.
  - **Proposed Interventions:**
    - **Construction of Modern Maternity Units (Ksh. 3,000,000)** at Kapkoi, Kapteren, and Kipsoen Health Centres to ensure safe deliveries.
    - **Procurement of Assorted Medical Equipment (Ksh. 9,000,000)** across Kapkoi, Kapteren, and Kipsoen to enhance maternal healthcare services.
    - **Mama Penda Kits (Ksh. 2,500,000 annually)** to promote facility-based deliveries and reduce maternal mortality.
    - **CHPs Performance Incentives (Ksh. 1,200,000)** to increase awareness and encourage maternal health service utilization.
    - **Outreach programs (Ksh. 2,500,000 annually)** to reach underserved populations and encourage facility-based deliveries.
- 

### 2. Immunization Coverage

**Indicator:** Proportion of children fully immunized (Ward: 50.8%, County: 73.3%, Rank: 13)

- **Justification:** Immunization coverage is a critical factor in preventing preventable diseases. While Kamariny has a lower-than-average immunization rate, targeted interventions can help improve these numbers.
- **Proposed Interventions:**
  - **Outreach Immunization Programs (Ksh. 2,500,000 annually)** to improve access and coverage.
  - **Automation and ICT Equipment (Ksh. 3,000,000)** for tracking immunization data, improving follow-ups, and reporting.

- **Capacity Building for CHPs (Ksh. 2,500,000)** to enable better community engagement and mobilization for immunization.
- 

### 3. Water, Sanitation, and Hygiene (WASH)

#### Indicators:

- **Latrine Coverage (Ward: 87%, County: 73.9%, Rank: 2)**
  - **Handwashing Coverage (Ward: 37%, County: 43.4%, Rank: 13)**
  - **Diarrheal Disease Incidence (Ward: 24.7%, County: 8.4%, Rank: 3)**
  - **Justification:** Despite relatively good latrine coverage, the ward still faces significant health risks from waterborne diseases and poor hygiene practices. Improved WASH infrastructure is necessary to reduce diarrheal disease incidence.
  - **Proposed Interventions:**
    - **Construction of Toilets (Ksh. 500,000)** at all health facilities, including Kapkoi, Kapteren, Kipsoen, and Sergoit.
    - **Procurement and Installation of Water Tanks (Ksh. 300,000 each)** to ensure continuous access to safe water at health facilities.
    - **Construction of Drainage Systems (Ksh. 1,000,000)** at key health centres to improve sanitation and reduce the risk of disease transmission.
    - **Handwashing and Hygiene Campaigns (Ksh. 500,000 annually)** to promote good hygiene practices, targeting schools, markets, and healthcare facilities.
- 

### 4. Malaria Control

**Indicator:** Malaria incidence per 1,000 population (Ward: 0.6%, County: 21.6%, Rank: 17)

- **Justification:** Malaria remains a major concern in Kamariny, despite a low incidence rate. There is a need for enhanced malaria prevention and treatment programs.
  - **Proposed Interventions:**
    - **Malaria Control Programs (Ksh. 2,500,000)** including IRS (Indoor Residual Spraying), insecticide-treated nets distribution, and environmental management.
    - **Procurement of Anti-Malaria Drugs (Ksh. 2,500,000 annually)** to ensure adequate stock for treatment.
    - **Procurement and Installation of Malaria Diagnostic Equipment (Ksh. 3,000,000)** at Kapkoi, Kapteren, Kipsoen, and Sergoit to enhance diagnosis and treatment.
    - **Health Education and Outreach (Ksh. 500,000 annually)** to raise awareness on malaria prevention.
-

## 5. Nutrition

**Indicator:** Prevalence of Stunting (Ward: 26%, County: 25.6%, Rank: 4)

- **Justification:** Stunting remains a significant issue in Kamariny. Targeted nutrition interventions are needed to improve child health and development.
  - **Proposed Interventions:**
    - **Nutrition Intervention Programs (Ksh. 3,750,000 annually)** to address stunting through nutrition education and supplementation.
    - **Capacity Building for Health Workers on Nutrition (Ksh. 1,000,000 annually)** to improve nutrition counseling at health facilities.
    - **Community-based Nutrition Outreach (Ksh. 1,000,000 annually)** targeting caregivers and parents of children under five.
- 

## 6. Teenage Pregnancy

**Indicator:** Teenage pregnancy rate (Ward: 25.1%, County: 18.6%, Rank: 6)

- **Justification:** Teenage pregnancy remains a critical issue in Kamariny, which can lead to maternal and child health complications.
  - **Proposed Interventions:**
    - **Comprehensive Reproductive Health Programs (Ksh. 2,500,000 annually)** to provide sexual and reproductive health education, counseling, and services.
    - **Support for Reproductive Health Outreaches (Ksh. 2,500,000 annually)** to reach schools, communities, and high-risk groups.
    - **Provision of Contraceptive Services and Awareness Campaigns (Ksh. 2,500,000 annually)** to reduce teenage pregnancies.
- 

## 7. Health Insurance Coverage

**Indicator:** Proportion covered by health insurance (Ward: 28%, County: 25%, Rank: 3)

- **Justification:** While health insurance coverage is slightly above average, more needs to be done to extend coverage to vulnerable groups, including the elderly and persons with disabilities.
  - **Proposed Interventions:**
    - **SHA/SHIF Enrollment for Vulnerable Groups (Ksh. 1,000,000)** to provide health insurance coverage for persons with disabilities (PWDs), the elderly, and other vulnerable populations.
    - **Community Awareness Programs (Ksh. 1,000,000)** to increase SHA/SHIF enrollment and awareness about the benefits of health insurance.
-

## 8. OPD Utilization Rate

**Indicator:** OPD Utilization Rate (Ward: 1.6%, County: 1.9%, Rank: 9)

- **Justification:** The low OPD utilization rate suggests barriers to accessing outpatient care, including infrastructure gaps and lack of awareness.
  - **Proposed Interventions:**
    - **Construction and Expansion of OPD Units (Ksh. 6,000,000)** at Kapkoi, Kapteren, Kipsoen, and Sergoit Health Centres.
    - **Procurement of Drugs (Ksh. 2,500,000 annually)** to ensure availability of essential medicines at health facilities.
    - **Fencing and Infrastructure Improvements (Ksh. 2,500,000)** to enhance access to healthcare services and improve the patient experience.
- 

## 9. Emergency and Transport Services

**Indicator:** Provision for an Emergency Transfer Centre (Ksh. 2,500,000)

- **Justification:** Access to emergency medical services is critical in reducing morbidity and mortality.
- **Proposed Interventions:**
  - **Establishment of an Emergency Transfer Centre (Ksh. 2,500,000)** at a strategic location to facilitate the swift transfer of emergency patients.
  - **Procurement of Ambulances (Ksh. 6,000,000)** for quick transport to and from health facilities.



# KAMARINY WARD HEALTH PROFILE

DEPARTMENT OF HEALTH SERVICES

**POPULATION**  
**49,569**

**MALE**  
**24,519**

**FEMALE**  
**25,050**

**HOUSEHOLDS**  
**11,618**

## Key Indicators

Indicator	Ward	County	Rank
Births attended by skilled health staff	97.5%	67.5%	3
Incidence of diarrhoeal diseases	24.7%	8.4%	3
Proportion of children fully immunized	50.8%	73.3%	13
Latrine Coverage	87%	73.9%	2
Prevalence of Stunting	26%	25.6%	4
Prevalence of Wasting	5.2%	5.1%	4
Handwashing Coverage	37%	43.4%	13
Malaria incidence per 1,000 population	0.6%	21.6%	17
Eye diseases morbidity rate	2.8%	3.2%	8
Modern contraceptive prevalence rate	49.4%	35.2%	1
OPD Utilization Rate	1.6	1.9%	9
Proportion covered by a health insurance	28%	25%	3
Teenage pregnancy rate (10-19 years)	25.1%	18.6%	6

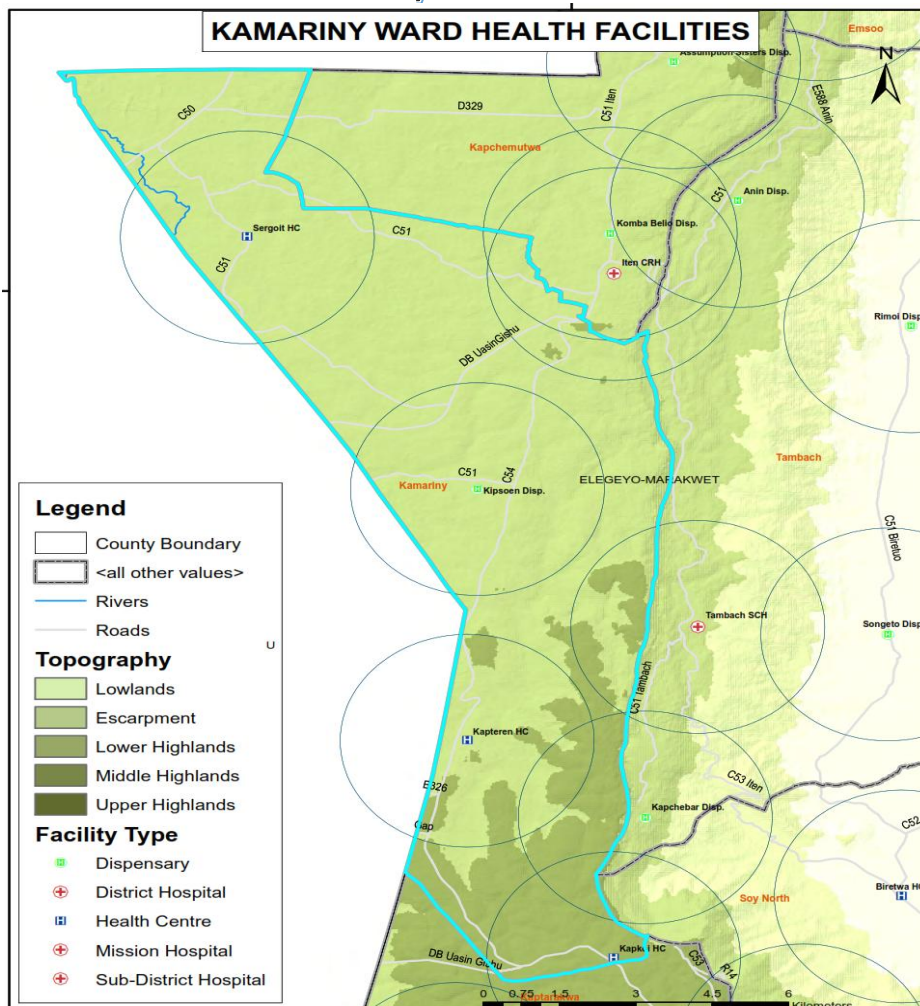
## Top Diseases

Disease	%	Cost
URTIs	70.0	3,872,250/-
Disease of the skin	8.8	292,500/-
Pneumonia	6.8	679,950/-
Diarrhoea	6.6	217,500/-
Eye Infections	2.8	63,000/-
Urinary Tract Infection	2.3	275,000/-
Malaria	1.1	44,000/-
Typhoid fever	1.1	423,500/-
Jiggers Infestation	0.4	19,200/-
Intestinal worms	0.1	12,400/-

## Burden of Preventable Diseases

**59%** **5,839,300/-**

## Facility Distribution



## List of Health Facilities

Health Facilities	Level
Kapkoii Health Centre	3
Kapteren Health Centre	3
Katalel Dispensary	2
Kipsoen Dispensary	2
Sergoit Health Centre	3
Kapkoii Health Centre	3

## OPD Attendance

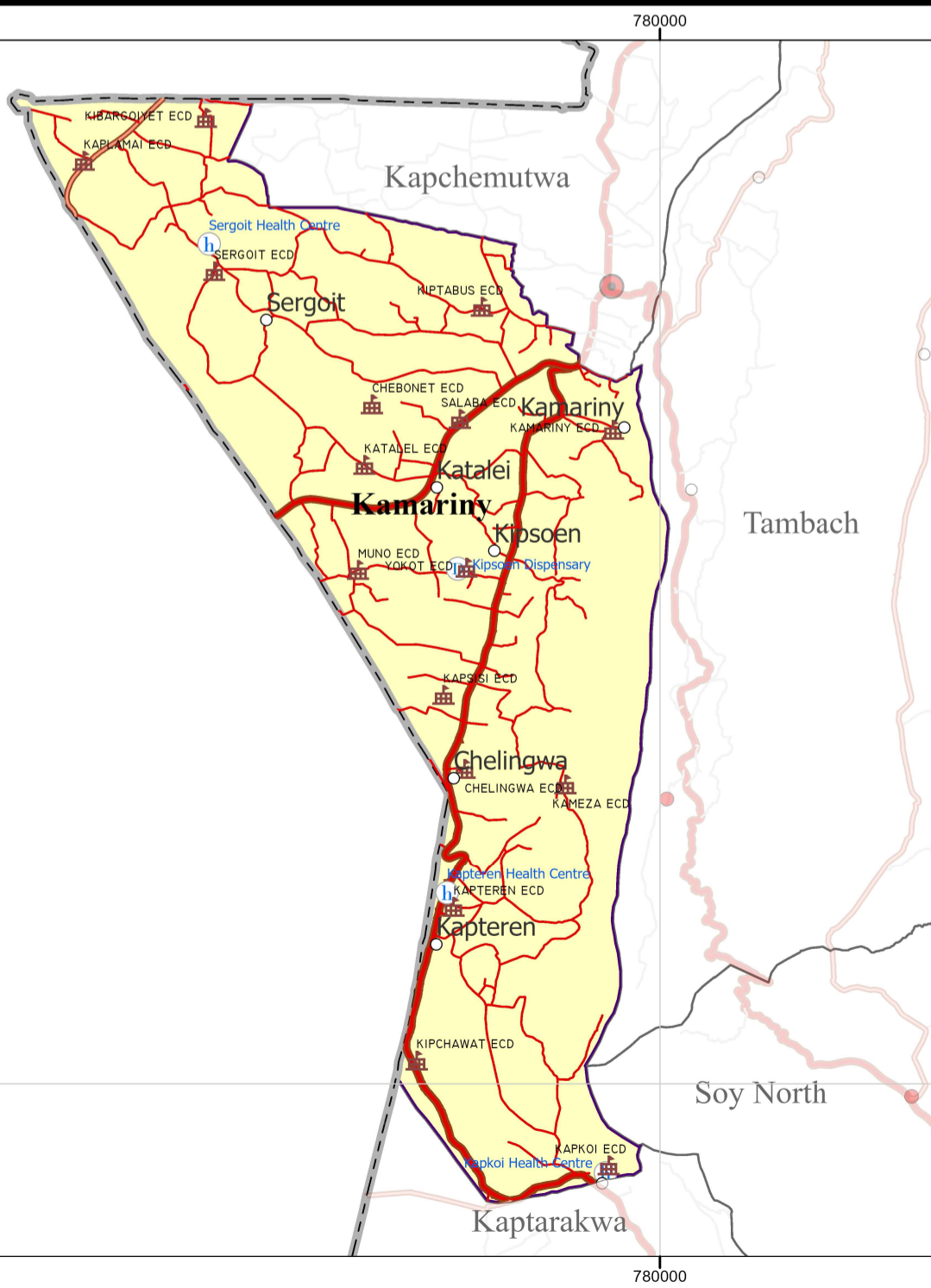
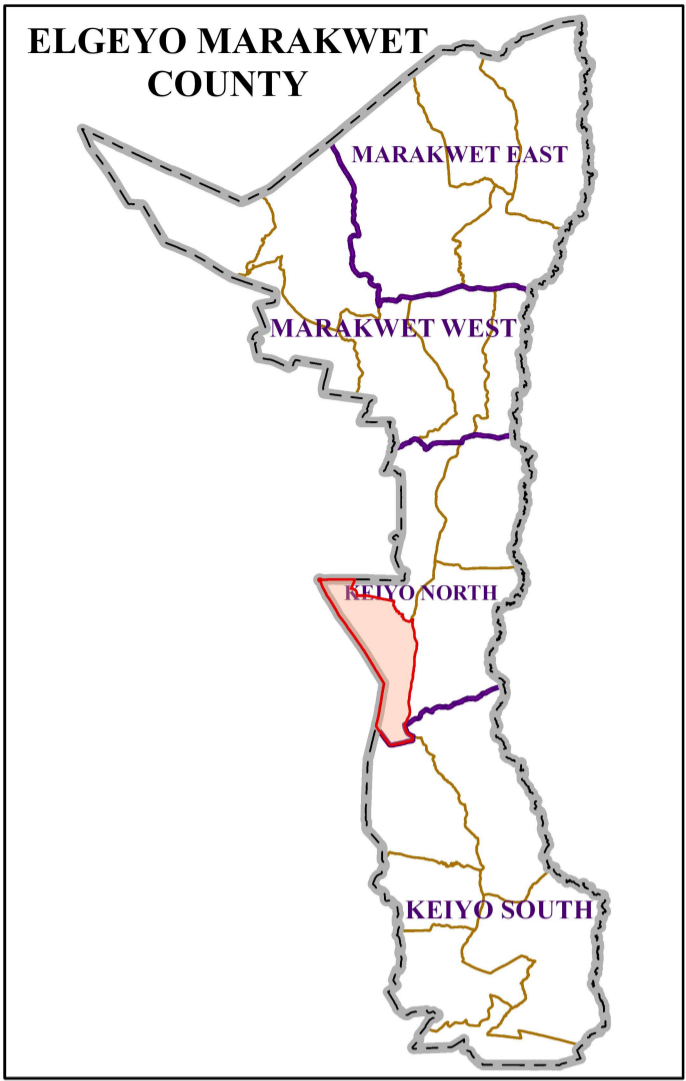
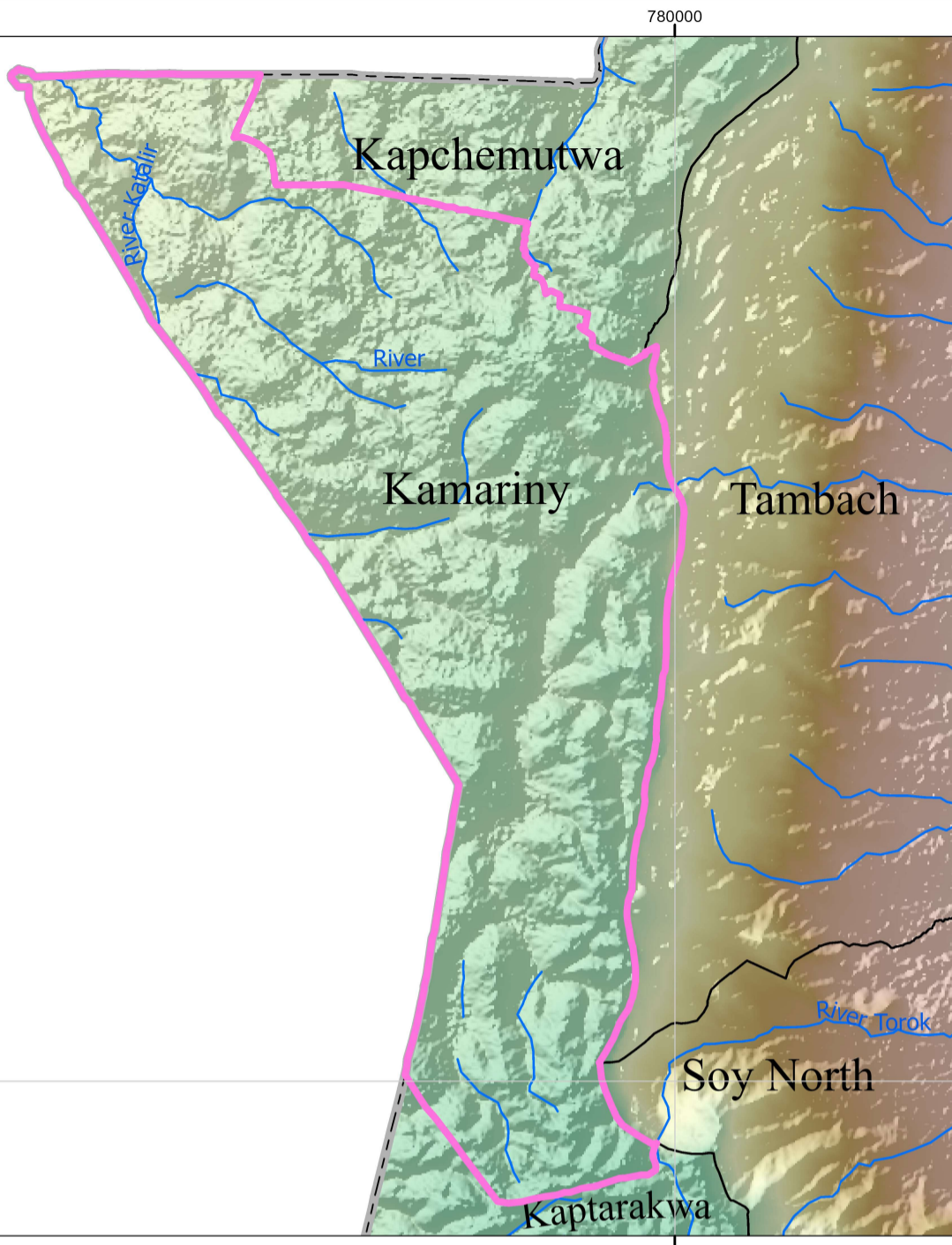
OPD attendance >5yrs Female	17,241
OPD attendance >5yrs Male	11,736
OPD Attendance <5yrs Female	4,912
OPD Attendance <5yrs Male	3,711
<b>Total OPD attendance</b>	<b>37,600</b>



**POVERTY LEVEL**

**43.5%**

# KAMARINY WARD



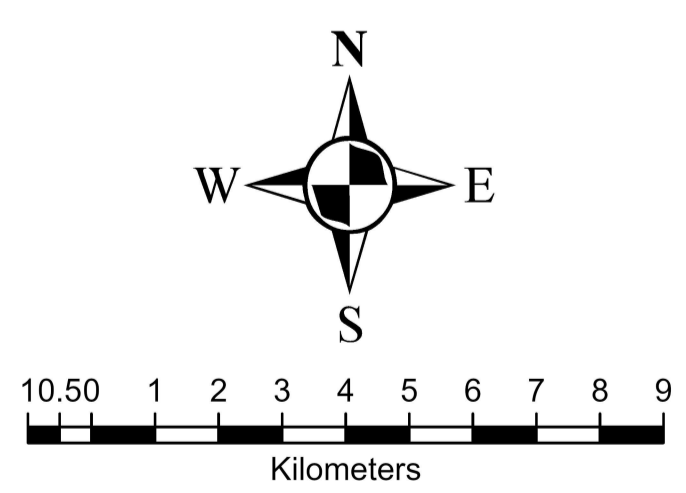
### Legend

**Towns/ Urban Centres Roads**

- County Headquarters
- Major Centre
- Other Centres
- 🏠 ECD Centres (16)
- 🏠 National Trunk Roads
- 🏠 Primary Roads
- 🏠 Secondary Roads
- 🏠 Other Roads
- 🏠 EMC\_Wards
- 🏠 EMC County Boundary

**Health Facilities**

- H County Hospital (0)
- H Sub-County Hospital (0)
- h Health Centre (2)
- D Dispensary (1)
- o Mission Hospital (0)
- 🌊 Rivers
- 📏 EMC Elevation Value (m)
- 3488
- 914



**SPATIAL REFERENCE**  
 NAME: ARC 1960 UTM ZONE 36N  
 PCS: ARC 1960 UTM ZONE 36N  
 GCS: GCS ARC 1960  
 DATUM: ARC 1960  
 PROJECTION: TRANSVERSE MERCATOR  
 MAP UNITS: METER