

Kabiemit Ward Health Profile

Situational Analysis

Kabiemit Ward faces various health challenges and infrastructure gaps despite commendable performance in some indicators such as handwashing coverage (80%) and low malaria incidence (1.1%). However, challenges persist in immunization coverage (52.7%), modern contraceptive prevalence (12.9%), and health insurance coverage (24%). These gaps hinder healthcare accessibility and service delivery.

1. Automation and ICT Equipment

Indicator: OPD Utilization Rate (1.7, County: 1.9%, Rank: 8)

- **Justification:** Enhancing digital health systems will improve patient data management and service delivery efficiency.
- **Proposed Interventions:**
 - Procurement of ICT equipment for dispensaries (Ksh. 200,000 per facility).
 - Training of health workers on Health Management Information Systems (HMIS).
 - Integration of electronic medical records for better tracking of patients.

2. Maternal and Child Health

Indicator: Births attended by skilled health staff (86.2%, County: 67.5%, Rank: 5)

- **Justification:** The high skilled birth attendance rates indicate a need for improved infrastructure to support the services.
- **Proposed Interventions:**
 - Construction of maternity wings (Ksh. 3,000,000) to provide a conducive environment for deliveries.
 - Procurement of assorted medical equipment (Ksh. 4,000,000) to enhance service delivery.
 - Provision of Mama Penda Kits (Ksh. 2,500,000 annually) to promote facility-based deliveries.

3. Water, Sanitation, and Hygiene (WASH)

Indicators:

- Latrine Coverage (76%, County: 73.9%, Rank: 9)
- Handwashing Coverage (80%, County: 43.4%, Rank: 1)
- **Justification:** Adequate sanitation facilities are essential to sustain high handwashing rates and prevent diarrheal diseases.
- **Proposed Interventions:**
 - Construction of burning chambers (Ksh. 1,000,000) for medical waste management.

- Connection to piped water (Ksh. 200,000 per facility) to ensure reliable water supply.
- Construction of perimeter walls (Ksh. 3,000,000) for security and hygiene improvement.

4. Health Infrastructure Development

Indicator: OPD Utilization Rate (1.7, County: 1.9%, Rank: 8)

- **Justification:** Improved infrastructure enhances access to healthcare services.
- **Proposed Interventions:**
 - Construction and completion of staff houses (Ksh. 5,000,000) to retain healthcare workers.
 - Renovation of old buildings (Ksh. 1,000,000) to ensure functionality.
 - Construction of outpatient departments (Ksh. 3,000,000 per facility).

5. Community Health Interventions

Indicators:

- Modern contraceptive prevalence rate (12.9%, County: 35.2%, Rank: 19)
- Teenage pregnancy rate (13.7%, County: 18.6%, Rank: 14)
- **Justification:** Low contraceptive prevalence necessitates targeted interventions.
- **Proposed Interventions:**
 - Community outreaches (Ksh. 2,500,000 annually) to educate on family planning.
 - Provision of CHPs kits (Ksh. 1,500,000) to facilitate outreach activities.
 - Performance-based incentives for CHPs (Ksh. 1,200,000) to improve community health services.

6. Health Product and Technologies

Indicator: Health insurance coverage (24%, County: 25%, Rank: 5)

- **Justification:** Affordable and accessible healthcare requires sufficient medical supplies and insurance coverage.
- **Proposed Interventions:**
 - Procurement of drugs (Ksh. 2,500,000 annually) to ensure availability of essential medicines.
 - SHA/SHIF cover for vulnerable groups (Ksh. 1,000,000) to increase insurance coverage.



KABIEMIT WARD HEALTH PROFILE

DEPARTMENT OF HEALTH SERVICES

POPULATION
20,399

MALE
10,209

FEMALE
10,190

HOUSEHOLDS
4,232

Key Indicators

Indicator	Ward	County	Rank
Births attended by skilled health staff	86.2%	67.5%	5
Incidence of diarrhoeal diseases	2.2%	8.4%	13
Proportion of children fully immunized	52.7%	73.3%	12
Latrine Coverage	76%	73.9%	9
Prevalence of Stunting	25%	25.6%	7
Prevalence of Wasting	5%	5.1%	7
Handwashing Coverage	80%	43.4%	1
Malaria incidence per 1,000 population	1.1%	21.6%	15
Eye diseases morbidity rate	2.7%	3.2%	10
Modern contraceptive prevalence rate	12.9%	35.2%	19
OPD Utilization Rate	1.7	1.9%	8
Proportion covered by a health insurance	24%	25%	5
Teenage pregnancy rate (10-19 years)	13.7%	18.6%	14

Top Diseases

Disease	%	Cost
URTIs	67.6	3,025,500/-
Disease of the skin	10.3	275,400/-
Pneumonia	10.1	811,800/-
Diarrhoea	7.5	201,900/-
Eye Infections	2.7	49,200/-
Urinary Tract Infection	1.1	105,600/-
Malaria	0.2	8,400/-
Typhoid fever	0.2	66,500/-
Intestinal worms	0.3	11,200/-

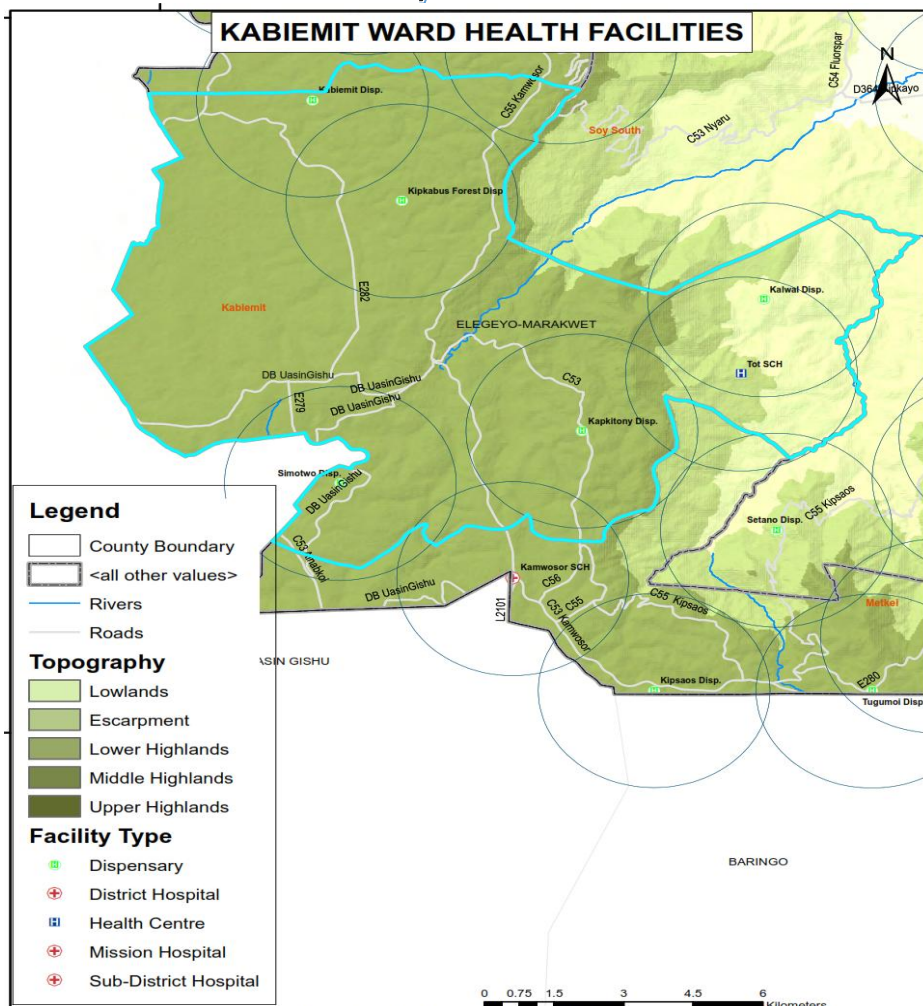
Burden of Preventable Diseases

78% **4,544,800/-**

List of Health Facilities

Health Facilities	Level
Kabiemit Dispensary	2
Kapkitony Dispensary	2
Ketigoi Dispensary	2
Kipkabus Forest Dispensary	2
Simotwo Dispensary	2

Facility Distribution



OPD Attendance

OPD attendance >5yrs Female	10,915
OPD attendance >5yrs Male	8,487
OPD Attendance <5yrs Female	1,789
OPD Attendance <5yrs Male	1,680
Total OPD attendance	22,871



POVERTY LEVEL

41.9%

