

Endo Ward Health Profile

Situational Analysis

Endo Ward faces critical health challenges that require targeted interventions to enhance service delivery. Key issues include low skilled birth attendance (13.5%), poor immunization coverage (36.8%), high diarrheal disease incidence (18.8%), and low health insurance coverage (11%). Additionally, infrastructural deficiencies such as lack of laboratory services, inadequate staff quarters, and poor sanitation facilities further compound healthcare access issues. The high prevalence of malaria (52.1%) and stunting (24.9%) necessitate immediate health interventions.

I. Skilled Birth Attendance and Maternity Services

Indicator: Births attended by skilled health staff (Ward: 13.5%, County: 67.5%, Rank: 17)

Justification: The low percentage of skilled birth attendance necessitates investment in maternal health services.

Proposed Interventions:

- Construction of a Maternity Wing at Kabetwa Health Centre (Ksh. 4,000,000)
 - Procurement of assorted medical equipment to support maternal care (Ksh. 5,000,000)
 - Provision of Mama Penda Kits to encourage facility-based deliveries (Ksh. 2,500,000 annually)
 - Performance-based incentives for CHPs to promote maternal health awareness (Ksh. 1,560,000 annually)
-

2. Immunization Coverage

Indicator: Proportion of children fully immunized (Ward: 36.8%, County: 73.3%, Rank: 17)

Justification: The low immunization coverage necessitates outreach and better service delivery.

Proposed Interventions:

- Outreach programs to increase immunization uptake (Ksh. 2,500,000 annually)
 - Automation through procurement of ICT equipment for data tracking (Ksh. 200,000)
 - Capacity building for CHPs to support immunization efforts (Ksh. 1,950,000)
-

3. Water, Sanitation, and Hygiene (WASH)

Indicators:

- Latrine Coverage (Ward: 60%, County: 73.9%, Rank: 18)
- Handwashing Coverage (Ward: 21%, County: 43.4%, Rank: 19)
- Diarrheal Disease Incidence (Ward: 18.8%, County: 8.4%, Rank: 4)

Justification: Poor sanitation and hygiene contribute to high diarrheal disease prevalence.

Proposed Interventions:

- Construction of toilets at health facilities (Ksh. 300,000)
 - Installation of 10,000-liter water tanks (Ksh. 200,000)
 - Community sensitization on hygiene practices (Ksh. 2,500,000 annually)
-

4. Malaria Control

Indicator: Malaria incidence per 1,000 population (Ward: 52.1%, County: 21.6%, Rank: 4)

Justification: High malaria burden necessitates strategic interventions to reduce transmission.

Proposed Interventions:

- Procurement of malaria treatment drugs (Ksh. 25,000,000 annually)
 - Strengthening diagnostic capacity through laboratory construction (Ksh. 3,000,000)
 - CHP-led malaria prevention programs (Ksh. 1,950,000)
-

5. Health Infrastructure Development

Justification: Inadequate infrastructure hinders healthcare service delivery and utilization.

Proposed Interventions:

- Construction of laboratories at multiple health facilities (Ksh. 3,000,000 per facility)
 - Construction of staff quarters to attract healthcare workers (Ksh. 4,000,000 per facility)
 - Procurement of ambulances for emergency response (Ksh. 5,000,000)
-

6. Emergency and Referral Services

Justification: Timely referrals are crucial in improving health outcomes.

Proposed Interventions:

- Provision for an Emergency Transfer Centre (Ksh. 2,500,000)
 - Procurement of motorbikes for faster response (Ksh. 1,500,000)
 - Recruitment of health interns to support service delivery (Ksh. 2,400,000)
-

7. Nutrition Interventions

Indicator: Prevalence of Stunting (Ward: 24.9%, County: 25.6%, Rank: 10)

Justification: Addressing malnutrition is critical for child growth and development.

Proposed Interventions:

- Nutrition intervention programs (Ksh. 3,750,000 annually)
 - Support for outreach programs to address stunting and wasting (Ksh. 2,500,000 annually)
 - Provision of nutritional supplements and counseling services
-

8. Health Product and Technology Procurement

Justification: Availability of medical supplies and technologies is crucial for quality healthcare delivery.

Proposed Interventions:

- Procurement of assorted medical equipment for various facilities (Ksh. 2,000,000 per facility)
- Procurement of drugs for primary healthcare (Ksh. 2,500,000 annually)



ENDO WARD HEALTH PROFILE

DEPARTMENT OF HEALTH SERVICES

POPULATION

26,743

MALE

13,075

FEMALE

13,668

HOUSEHOLDS

6,334

Key Indicators

Indicator	Ward	County	Rank
Births attended by skilled health staff	13.5%	67.5%	17
Incidence of diarrhoeal diseases	18.8%	8.4%	4
Proportion of children fully immunized	36.8%	73.3%	17
Latrine Coverage	60%	73.9%	18
Prevalence of Stunting	24.9%	25.6%	10
Prevalence of Wasting	5%	5.1%	10
Handwashing Coverage	21%	43.4%	19
Malaria incidence per 1,000 population	52.1%	21.6%	4
Eye diseases morbidity rate	1.7%	3.2%	19
Modern contraceptive prevalence rate	41.3%	35.2%	3
OPD Utilization Rate	1.9	1.9%	4
Proportion covered by a health insurance	11%	25%	17
Teenage pregnancy rate (10-19 years)	18.9%	18.6%	10

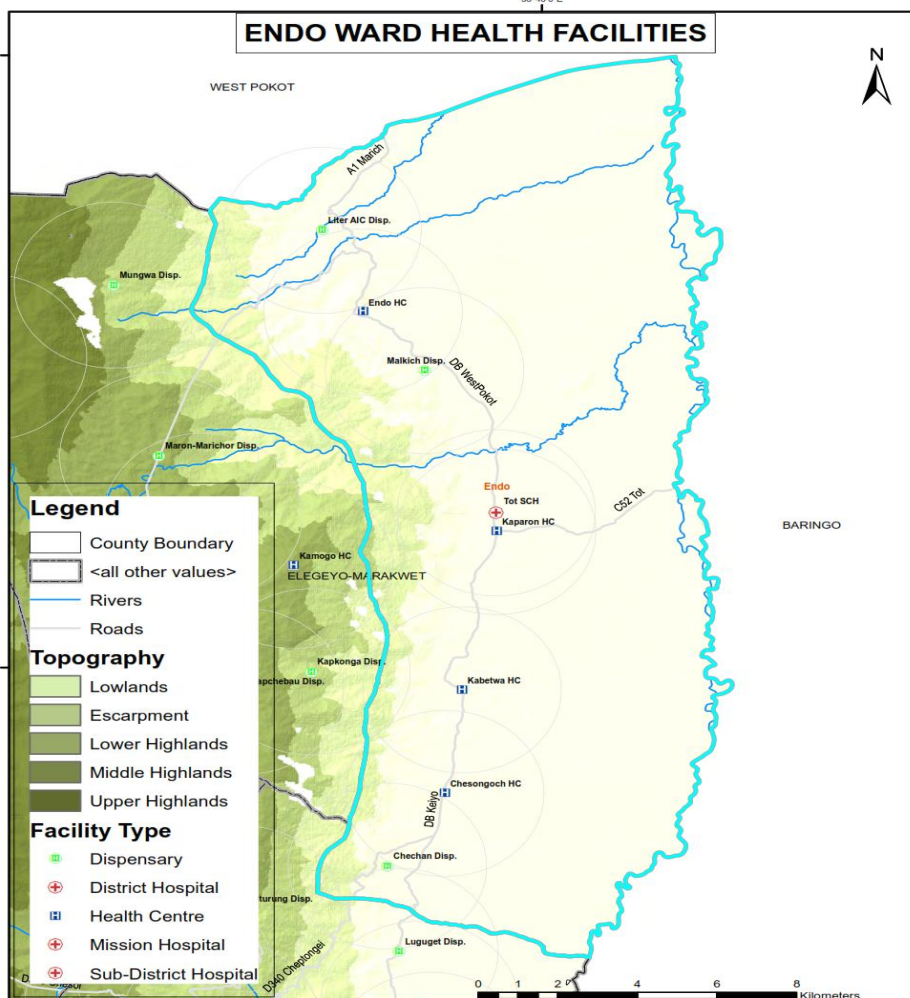
Top Diseases

Disease	%	Cost
URTIs	58.4	4,711,750/-
Malaria	15.2	562,800/-
Disease of the skin	10.1	488,100/-
Diarrhoea	6.3	306,750/-
Pneumonia	5.0	729,000/-
Urinary Tract Infection	2.0	349,250/-
Eye Infections	1.7	55,400/-
Typhoid fever	0.7	371,000/-
Intestinal worms	0.6	19,900/-

Burden of Preventable Diseases

66% **7,593,950/-**

Facility Distribution



List of Health Facilities

Health Facilities	Level
Chechan Dispensary	2
Chesongoch Sub-District Hospital	3B
Endo Health Centre	3
Kabetwa Health Centre	3
Kaparon Health Centre	3
Liter (AIC) Dispensary	2
Malkich Dispensary	2

OPD Attendance

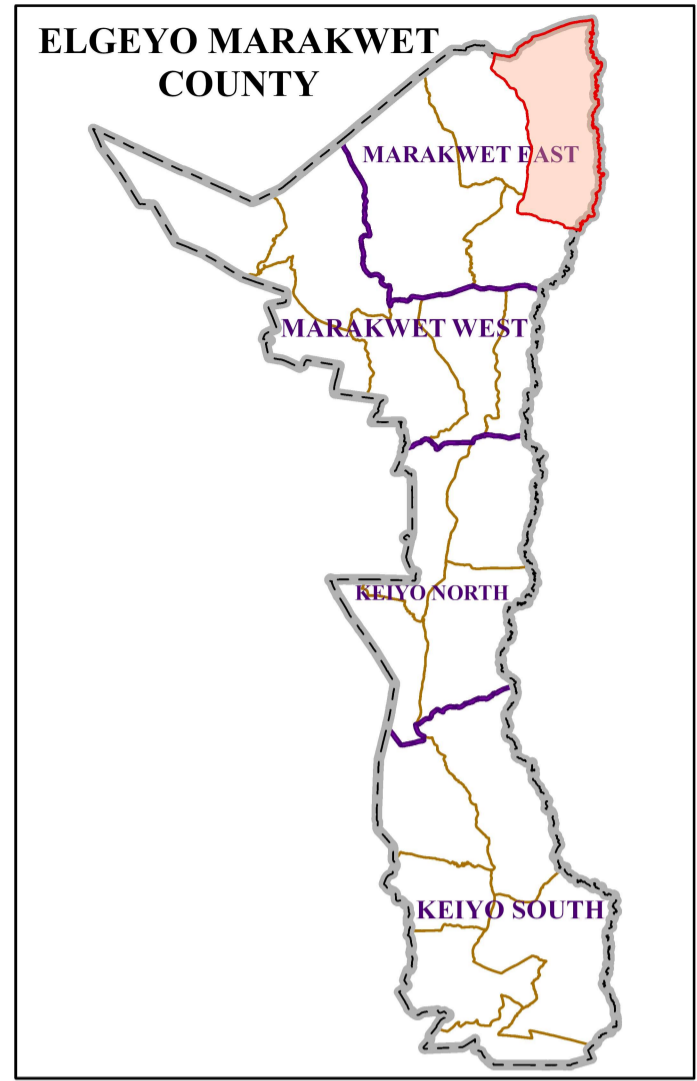
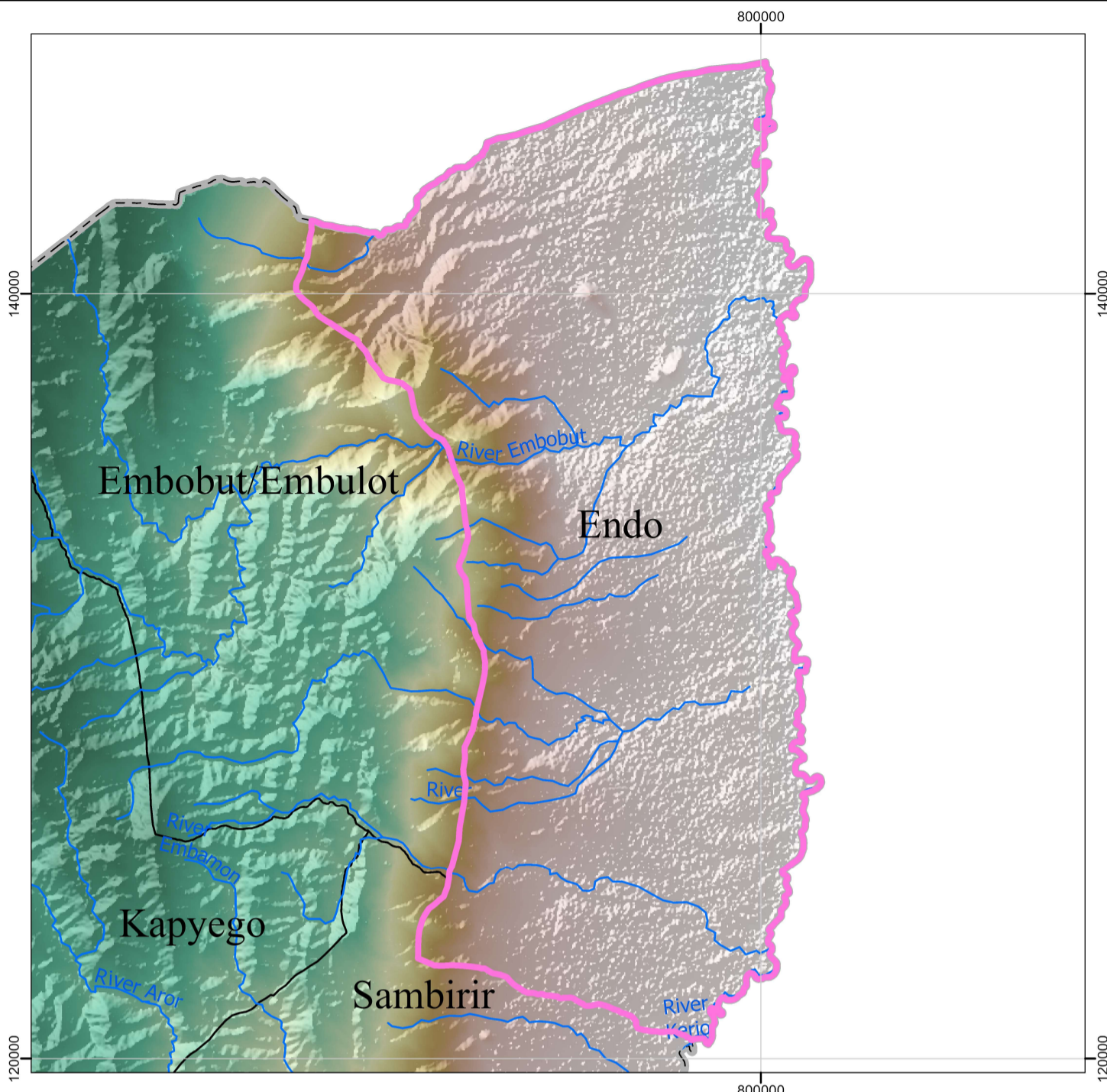
OPD attendance >5yrs Female	21,990
OPD attendance >5yrs Male	14,399
OPD Attendance <5yrs Female	6,279
OPD Attendance <5yrs Male	6,139
Total OPD attendance	48,807



POVERTY LEVEL

41.5%

ENDO WARD



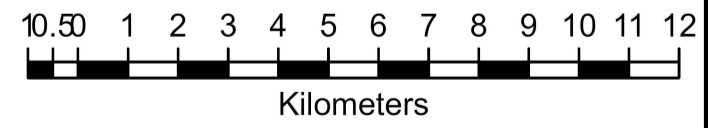
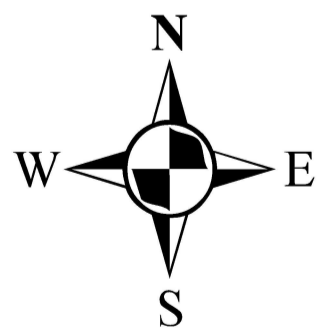
Legend

Towns/ Urban Centres Roads

- County Headquarters
- Major Centre
- Other Centres
- ECD Centres (19)
- National Trunk Roads
- Primary Roads
- Secondary Roads
- Other Roads

Health Facilities

- County Hospital (0)
- Sub-County Hospital (1)
- Health Centre (4)
- Dispensary (3)
- Mission Hospital (0)
- EMC_Wards
- EMC County Boundary
- Rivers
- EMC Elevation Value (m)
- 3488
- 914



Scale: 1:151,000

SPATIAL REFERENCE
 NAME: ARC 1960 UTM ZONE 36N
 PCS: ARC 1960 UTM ZONE 36N
 GCS: GCS ARC 1960
 DATUM: ARC 1960
 PROJECTION: TRANSVERSE MERCATOR
 MAP UNITS: METER

EMC CARTOGRAPHY