

EMSOO WARD HEALTH PROFILE

Situational Analysis

Emsoo Ward faces several health challenges as indicated by available health indicators. The ward ranks poorly in critical health areas such as births attended by skilled health staff (44%), latrine coverage (53%), and handwashing coverage (12%). However, it has relatively better rankings in areas like modern contraceptive prevalence (45.5%) and OPD utilization rate (3.2). Infrastructure gaps, inadequate medical equipment, and low health insurance coverage (18%) hinder healthcare service delivery and access. The following strategies and interventions aim to address these challenges and improve healthcare outcomes.

1. Skilled Birth Attendance and Maternity Services

Indicator: Births attended by skilled health staff (Ward: 44%, County: 67.5%, Rank: 9)

- **Justification:** The low percentage of skilled birth attendance highlights the urgent need for improved maternity services.
- **Proposed Interventions:**
 - Construction of a modern maternity unit at Chegilet Health Centre (Ksh. 4,000,000).
 - Procurement of assorted medical equipment (Ksh. 6,000,000).
 - Mama Penda Kits (Ksh. 2,500,000 annually) to encourage facility-based deliveries.
 - Community Health Volunteers (CHPs) Performance Incentives (Ksh. 1,200,000) to promote maternal health awareness.

2. Immunization Coverage

Indicator: Proportion of children fully immunized (Ward: 44.6%, County: 73.3%, Rank: 15)

- **Justification:** Low immunization rates necessitate targeted outreach programs.
- **Proposed Interventions:**
 - Procurement of assorted medical equipment for immunization services (Ksh. 4,000,000).
 - Automation and ICT equipment (Ksh. 3,000,000) to enhance data management.
 - Support for outreaches (Ksh. 2,500,000 annually).

3. Water, Sanitation, and Hygiene (WASH)

Indicators:

- Latrine Coverage (Ward: 53%, County: 73.9%, Rank: 19)
- Handwashing Coverage (Ward: 12%, County: 43.4%, Rank: 20)
- Diarrheal Disease Incidence (Ward: 1.3%, County: 8.4%, Rank: 15)
- **Justification:** Poor sanitation and hygiene contribute to the high incidence of diarrheal diseases.
- **Proposed Interventions:**

- Construction of ablution block toilets at Chegilet Health Centre (Ksh. 600,000).
- Installation of water storage tanks and piping (Ksh. 500,000).
- Construction of septic tanks and sewerage systems (Ksh. 1,500,000).

4. Malaria Control

Indicator: Malaria incidence per 1,000 population (Ward: 14%, County: 21.6%, Rank: 5)

- **Justification:** Malaria remains a significant public health concern.
- **Proposed Interventions:**
 - Procurement of drugs (Ksh. 2,500,000 annually).
 - Support malaria prevention programs (Ksh. 2,500,000).
 - Construction and equipping of a modern lab (Ksh. 2,500,000).

5. Health Infrastructure Improvement

Justification: Poor infrastructure affects healthcare service delivery.

- **Proposed Interventions:**
 - Construction of modern OPD (Ksh. 4,000,000).
 - Construction of male and female wards (Ksh. 5,000,000).
 - Construction of staff houses (Ksh. 2,000,000).
 - Fencing of facilities (Ksh. 200,000).

6. Emergency and Referral Services

Justification: Improved emergency response will enhance healthcare delivery.

- **Proposed Interventions:**
 - Maintenance and insurance of Chegilet ambulance (Ksh. 3,000,000).
 - Provision for an Emergency Transfer Centre (Ksh. 2,500,000).
 - Procurement of motorbikes for community units (Ksh. 900,000).

7. Health Insurance Coverage

Indicator: Proportion covered by health insurance (Ward: 18%, County: 25%, Rank: 9)

- **Justification:** Low health insurance coverage limits access to healthcare.
- **Proposed Interventions:**
 - SHA/SHIF cover for PWDs, vulnerable groups, and the elderly (Ksh. 1,000,000).
 - Community awareness programs to increase SHA/SHIF enrollment.

8. Primary and Community Health

Justification: Strengthening community health structures improves overall health outcomes.

- **Proposed Interventions:**
 - Procurement of CHPs kits (Ksh. 1,500,000).
 - Performance-based incentives for CHPs (Ksh. 1,200,000).
 - Support for CLTS, food, and water sampling (Ksh. 2,500,000 annually).



EMSOO WARD HEALTH PROFILE

DEPARTMENT OF HEALTH SERVICES

POPULATION
14,432

MALE
11,498

FEMALE
11,298

HOUSEHOLDS
4,875

Key Indicators

Indicator	Ward	County	Rank
Births attended by skilled health staff	44%	67.5%	9
Incidence of diarrhoeal diseases	1.3%	8.4%	15
Proportion of children fully immunized	44.6%	73.3%	15
Latrine Coverage	53%	73.9%	19
Prevalence of Stunting	24.8%	25.6%	12
Prevalence of Wasting	5%	5.1%	12
Handwashing Coverage	12	43.4%	20
Malaria incidence per 1,000 population	14%	21.6%	5
Eye diseases morbidity rate	2.5%	3.2%	13
Modern contraceptive prevalence rate	45.5%	35.2%	2
OPD Utilization Rate	3.2	1.9%	1
Proportion covered by a health insurance	18%	25%	9
Teenage pregnancy rate (10-19 years)	18.2%	18.6%	11

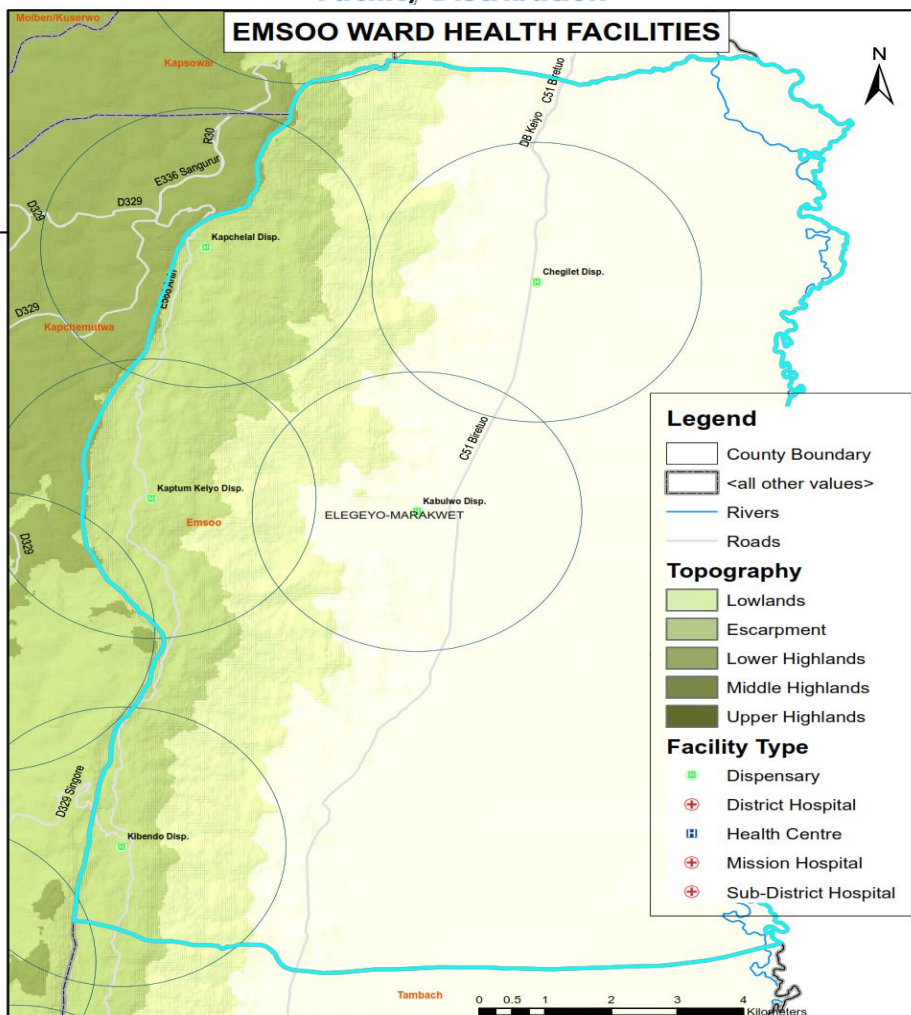
Top Diseases

Disease	%	Cost
URTIS	64.9	3,510,750/-
Pneumonia	10.7	1,044,900/-
Disease of the skin	7.6	247,950/-
Urinary Tract Infection	7.0	837,100/-
Diarrhoea	4.8	156,750/-
Eye Infections	2.5	54,400/-
Malaria	2.1	65,400/-
Typhoid fever	0.2	24,500/-
Jiggers Infestation	0.1	8,500/-

Burden of Preventable Diseases

68% **5,945,250/-**

Facility Distribution



List of Health Facilities

Health Facilities	Level
Chegilet Health Centre	3
Kabulwo Dispensary	2
Kamoingon Dispensary	2
Kapchela Health Centre	3
Kaptum Dispensary	2
Kibendo Health Centre	3

OPD Attendance

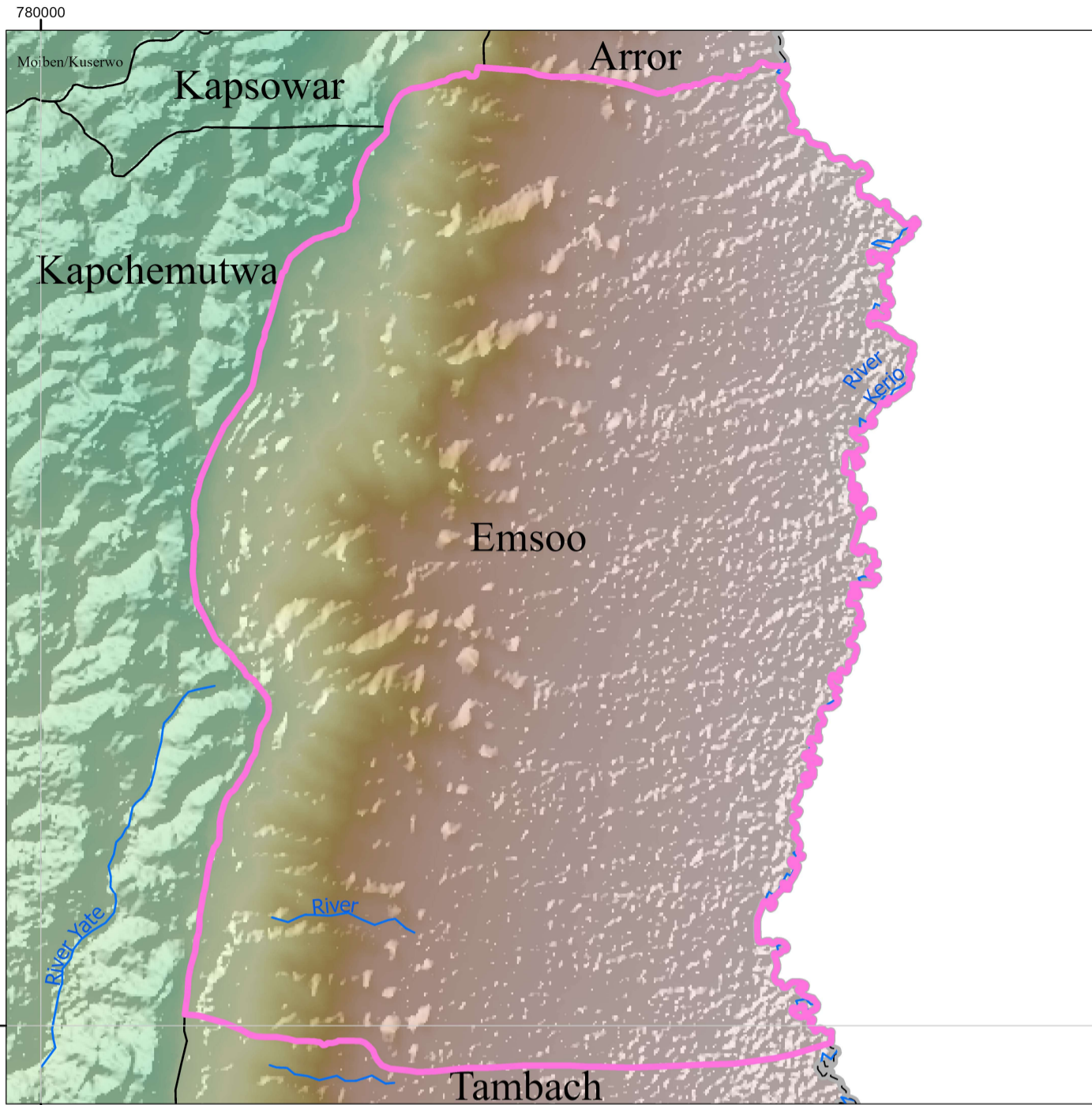
OPD attendance >5yrs Female	14,701
OPD attendance >5yrs Male	10,786
OPD Attendance <5yrs Female	3,481
OPD Attendance <5yrs Male	2,871
Total OPD attendance	31,839



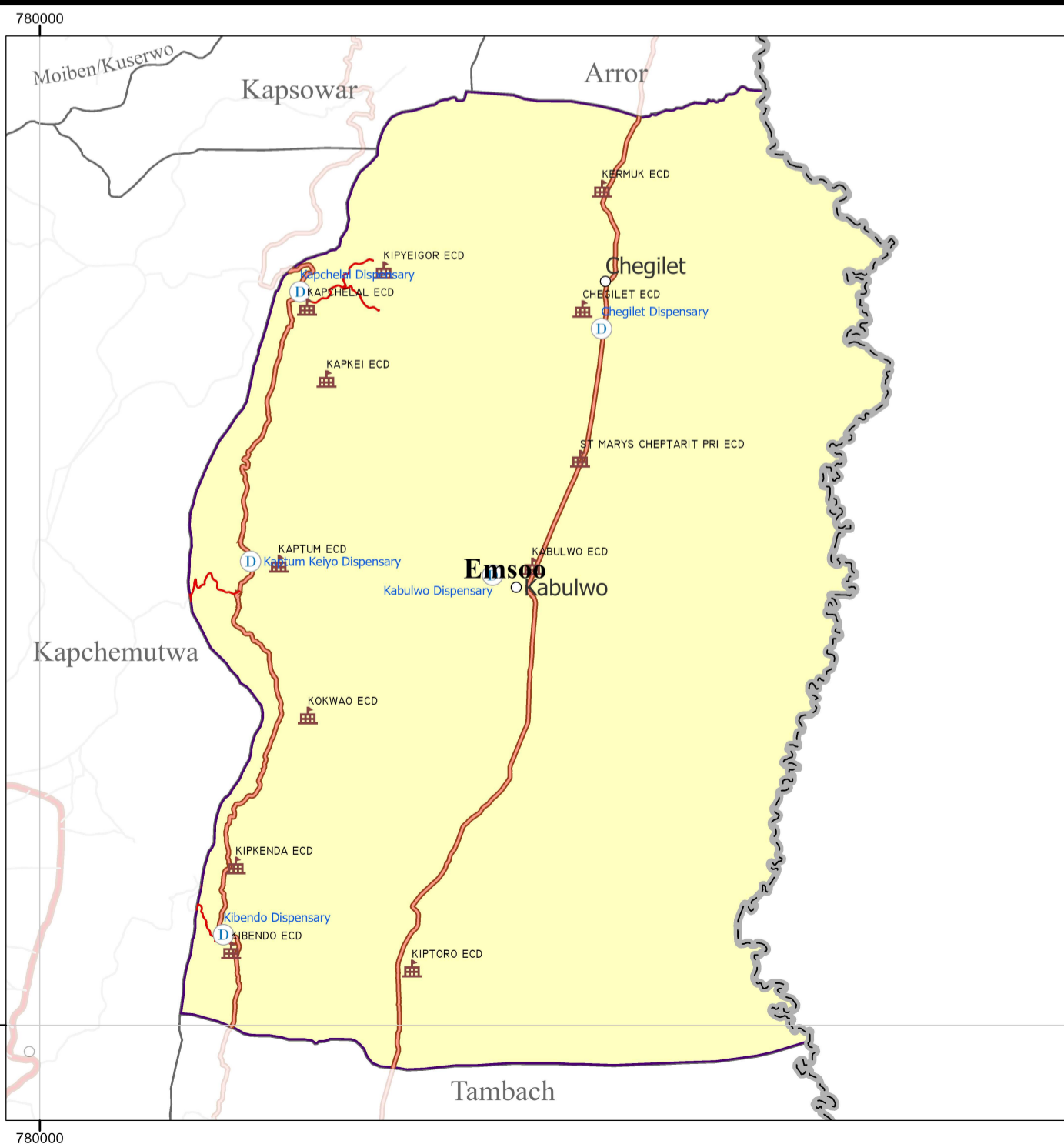
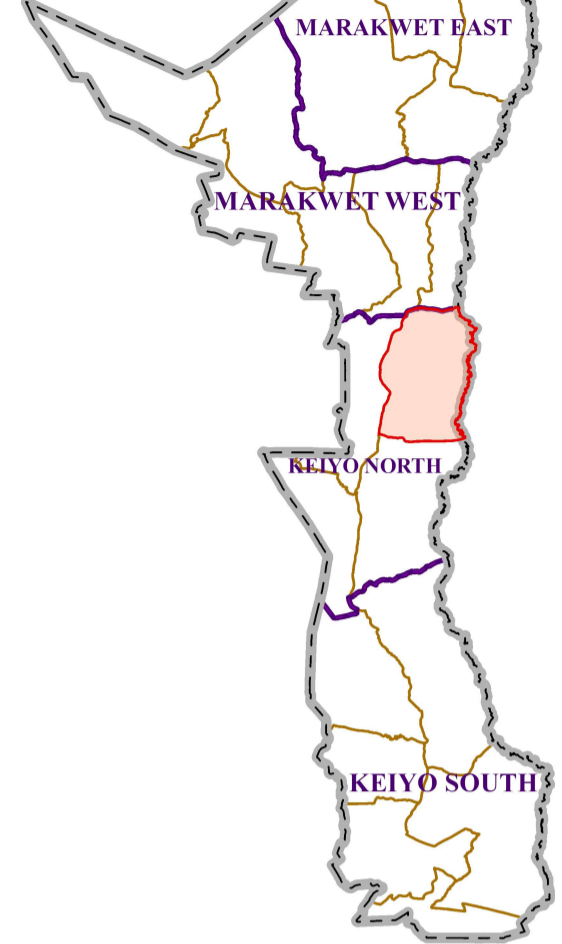
POVERTY LEVEL

41.5%

EMSOO WARD

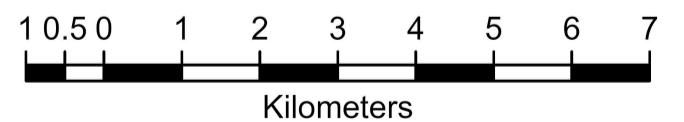
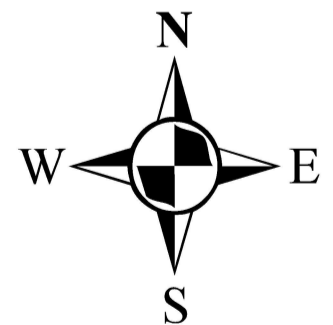


ELGEYO MARAKWET COUNTY



Legend

- | | |
|-------------------------|----------------------|
| County Headquarters | National Trunk Roads |
| Major Centre | Primary Roads |
| Other Centres | Secondary Roads |
| ECD Centres (12) | Other Roads |
| County Hospital (0) | EMC_Wards |
| Sub-County Hospital (0) | EMC County Boundary |
| Health Centre (0) | Rivers |
| Dispensary (5) | EMC Elevation |
| Mission Hospital (0) | Value (m) |
| | 3488 |
| | 914 |



Scale: 1:97,000

SPATIAL REFERENCE
 NAME: ARC 1960 UTM ZONE 36N
 PCS: ARC 1960 UTM ZONE 36N
 GCS: GCS ARC 1960
 DATUM: ARC 1960
 PROJECTION: TRANSVERSE MERCATOR
 MAP UNITS: METER

EMC CARTOGRAPHY