

# CHERANGANY/CHEBORORWA WARD HEALTH PROFILE

## Situational Analysis

Cherangany/Chebororwa Ward faces several healthcare challenges, reflected in key health indicators such as low skilled birth attendance (30.9%), high incidence of diarrheal diseases (17.2%), and a low proportion of the population covered by health insurance (14%). Infrastructure deficiencies, such as inadequate sanitation facilities and limited emergency response services, further hinder access to quality healthcare. Addressing these issues requires strategic interventions focusing on maternal health, immunization, sanitation, infrastructure, and healthcare accessibility.

### **I. Skilled Birth Attendance and Maternity Services** *Indicator: Births attended by skilled health staff (Ward: 30.9%, County: 67.5%, Rank: 13)*

- **Justification:** The relatively low percentage of skilled birth attendance underscores the need for improved maternity services.
- **Proposed Interventions:**
  - Construction of Emergency Maternity (Ksh. 3,000,000) at Busieso Dispensary.
  - Procurement of assorted medical equipment (Ksh. 4,000,000) to enhance maternity care.
  - Purchase of KEPI fridge (Ksh. 300,000) to support maternal and child health services.
  - CHPs performance-based incentives (Ksh. 1,200,000) to promote maternal health awareness.

### **2. Immunization Coverage** *Indicator: Proportion of children fully immunized (Ward: 97.1%, County: 73.3%, Rank: 3)*

- **Justification:** Despite high immunization rates, efforts are needed to sustain and further improve coverage.
- **Proposed Interventions:**
  - Procurement of KEPI fridges (Ksh. 300,000 each) for vaccine storage.
  - Automation through procurement of ICT equipment (Ksh. 200,000) for efficient data tracking.
  - CHPs training programs to enhance community-based immunization efforts.

### **3. Water, Sanitation, and Hygiene (WASH)** *Indicators:*

- Latrine Coverage (Ward: 72%, County: 73.9%, Rank: 13)
- Handwashing Coverage (Ward: 40%, County: 43.4%, Rank: 11)
- **Justification:** Gaps in sanitation and hygiene infrastructure contribute to high diarrheal disease incidence.
- **Proposed Interventions:**
  - Construction of placenta pits (Ksh. 300,000 each) at Busieso and Yatoi Dispensaries.
  - Procurement and installation of water tanks (Ksh. 200,000 each) to improve water access.

- Provision of piped water connections (Ksh. 300,000 per facility).

#### 4. Infrastructure and Equipment

- **Justification:** Inadequate infrastructure affects service delivery.
- **Proposed Interventions:**
  - Construction of modern laboratory (Ksh. 3,000,000) at Busieso Dispensary.
  - Construction of drug store (Ksh. 2,000,000) at Chebororwa Health Centre.
  - Installation of solar panels (Ksh. 500,000 each) for sustainable energy.
  - Procurement of medical equipment (Ksh. 5,000,000) to improve service delivery.

#### 5. Emergency Services

- **Justification:** Limited emergency response capacity impacts health outcomes.
- **Proposed Interventions:**
  - Purchase of 2 ward ambulances (Ksh. 1,200,000) for Chebororwa Health Centre.
  - Provision for an Emergency Transfer Centre (Ksh. 2,500,000) for rapid response.

#### 6. Health Insurance Coverage *Indicator: Proportion covered by health insurance (Ward: 14%, County: 25%, Rank: 13)*

- **Justification:** Low health insurance coverage limits access to essential health services.
- **Proposed Interventions:**
  - SHA/SHIF cover for vulnerable groups (Ksh. 1,000,000).
  - Community sensitization programs to increase insurance uptake.

#### 7. Nutrition *Indicator: Prevalence of Stunting (Ward: 24.4%, County: 25.6%, Rank: 20)*

- **Justification:** High stunting rates necessitate targeted nutrition interventions.
- **Proposed Interventions:**
  - Nutrition intervention programs (Ksh. 3,750,000 annually).
  - Procurement of nutrition supplements.
  - Capacity building for health staff on nutrition management.

#### 8. Disease Control *Indicator: Incidence of diarrheal diseases (Ward: 17.2%, County: 8.4%, Rank: 5)*

- **Justification:** High prevalence necessitates preventive measures.
- **Proposed Interventions:**
  - Conducting medical screenings (Ksh. 5,000,000 annually).
  - Procurement of essential drugs (Ksh. 2,500,000 annually).

#### 9. Community Health Volunteer (CHPs) Support

- **Justification:** CHPs play a critical role in primary healthcare delivery.
- **Proposed Interventions:**

- Procurement of CHPs kits (Ksh. 1,500,000 for five years).
- Performance-based incentives (Ksh. 1,200,000).

## **10. General Facility Improvements**

- **Justification:** Infrastructure upgrades will enhance service delivery.
- **Proposed Interventions:**
  - Renovation and painting of facilities (Ksh. 1,000,000 per facility).
  - Fencing of health facilities (Ksh. 300,000 per facility).
  - Completion of staff houses (Ksh. 1,000,000 each) to retain health workers..



# CHEBOROWA/CHERANGANY WARD HEALTH PROFILE

DEPARTMENT OF HEALTH SERVICES

**POPULATION**  
**39,507**

**MALE**  
**19,788**

**FEMALE**  
**19,718**

**HOUSEHOLDS**  
**8,427**

### Key Indicators

Indicator	Ward	County	Rank
Births attended by skilled health staff	30.9	67.5%	13
Incidence of diarrhoeal diseases	17.2%	8.4%	5
Proportion of children fully immunized	97.1%	73.3%	3
Latrine Coverage	72%	73.9%	13
Prevalence of Stunting	24.4%	25.6%	20
Prevalence of Wasting	4.9%	5.1%	20
Handwashing Coverage	40%	43.4%	11
Malaria incidence per 1,000 population	0.5%	21.6%	18
Eye diseases morbidity rate	2.5%	3.2%	15
Modern contraceptive prevalence rate	39.9%	35.2%	4
OPD Utilization Rate	0.7	1.9%	19
Proportion covered by a health insurance	14%	25%	13
Teenage pregnancy rate (10-19 years)	28.1%	18.6%	2

### Top Diseases

Disease	%	Cost
URTIs	65.5	5,123,750
Disease of the skin	10.9	511,050
Diarrhoea	7.3	340,350
Pneumonia	8.1	1,138,050
Urinary Tract Infection	2.7	468,600
Typhoid fever	2.6	1,429,750
Eye Infections	2.5	77,800
Intestinal worms	0.2	23,500
Malaria	0.1	20,400

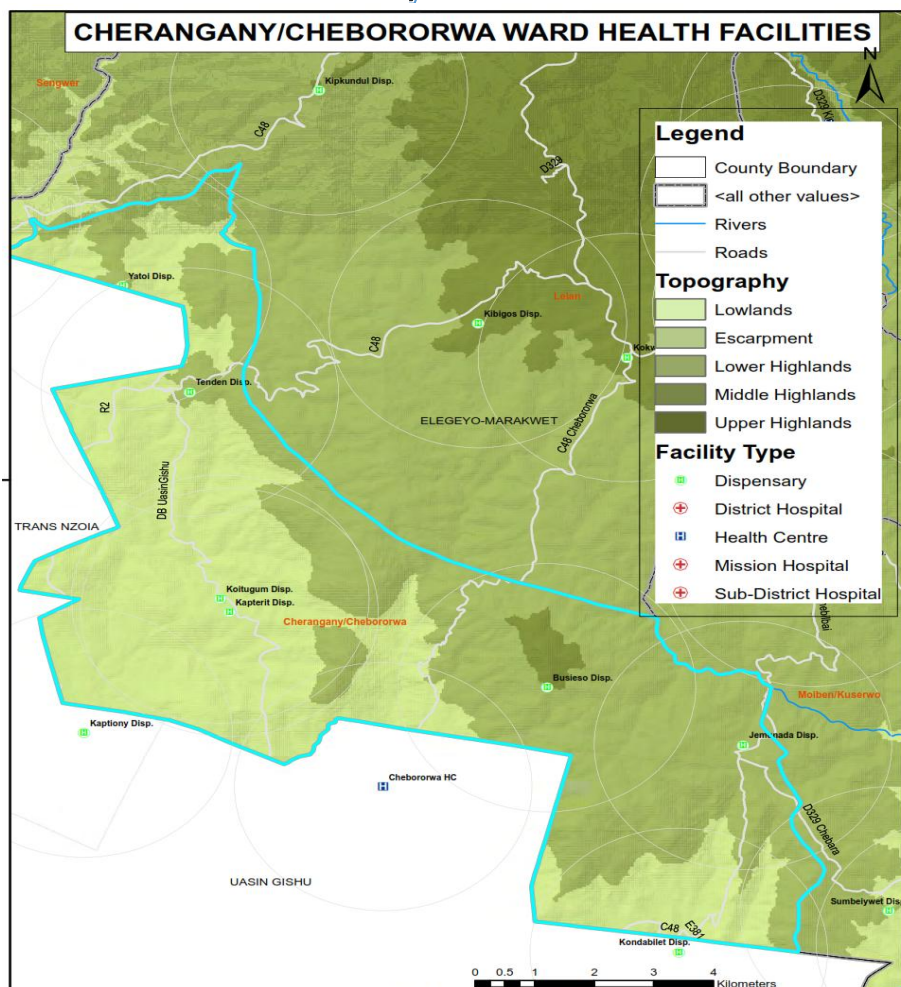
### Burden of Preventable Diseases

**48.3%**      **9,099,950/-**

### List of Health Facilities

Health Facilities	Level
Busieso Dispensary	2
Chebororwa Health Centre	3
Kaptiony Dispensary	2
Kilos Dispensary	2
Koitugum Dispensary	2
Kondabilet Health Centre	3
Tenden Dispensary	2
Yatoi Dispensary	2

### Facility Distribution



### OPD Attendance

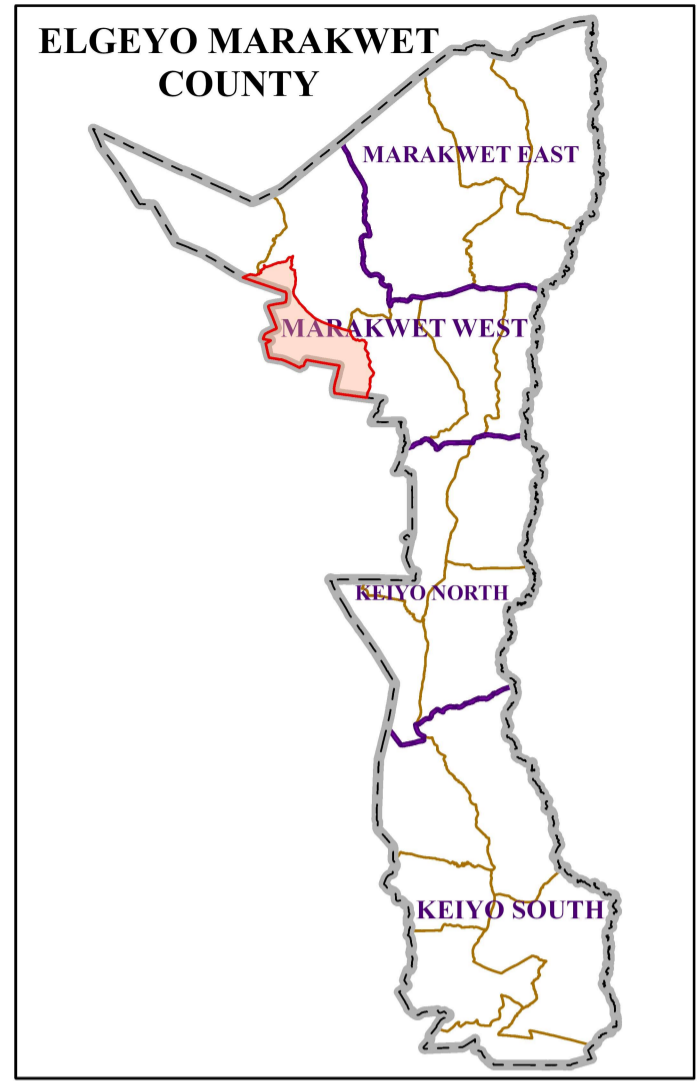
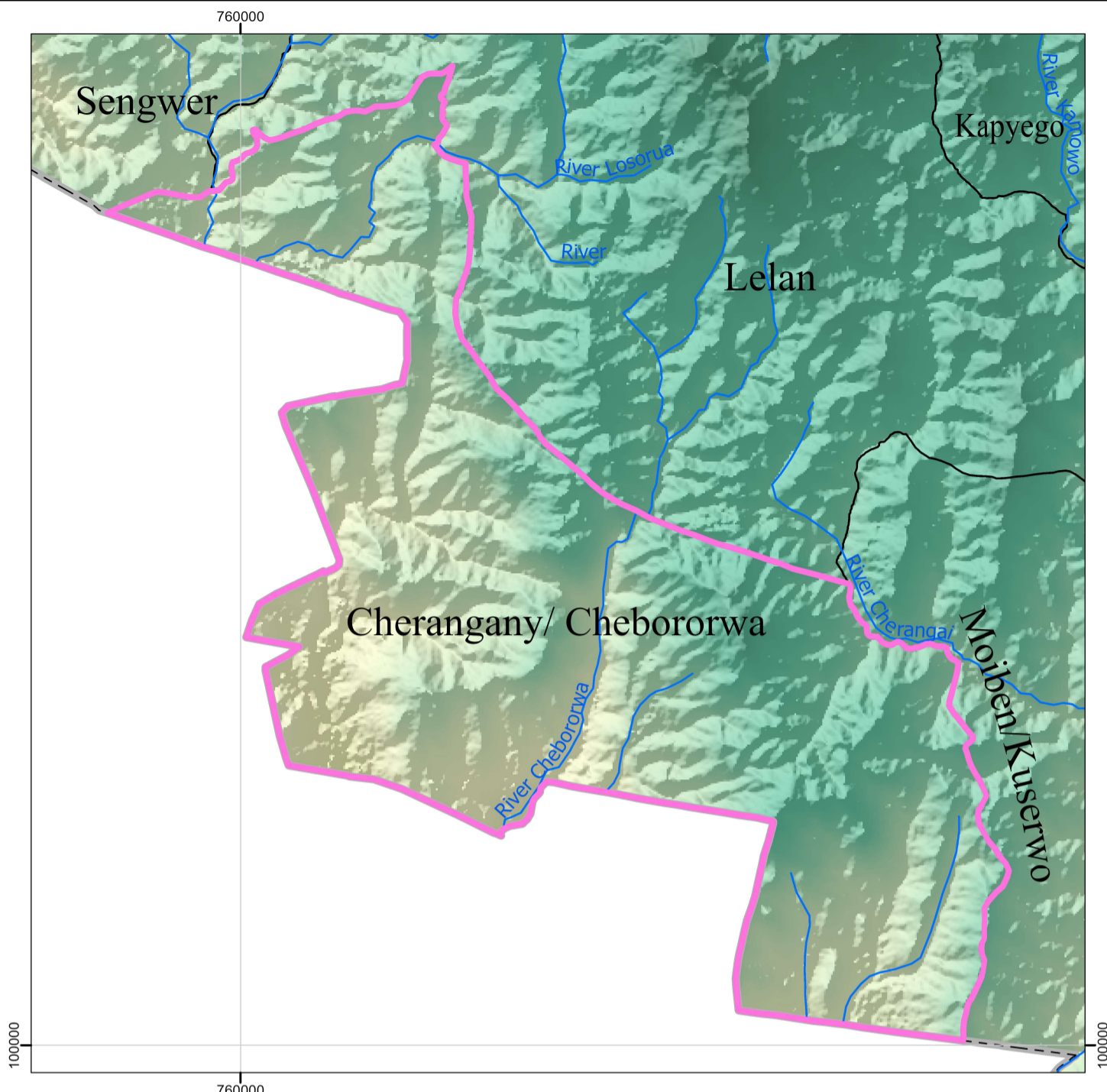
OPD attendance >5yrs Female	20,713
OPD attendance >5yrs Male	13,059
OPD Attendance <5yrs Female	5,249
OPD Attendance <5yrs Male	4,927
<b>Total OPD attendance</b>	<b>43,948</b>



**POVERTY LEVEL**

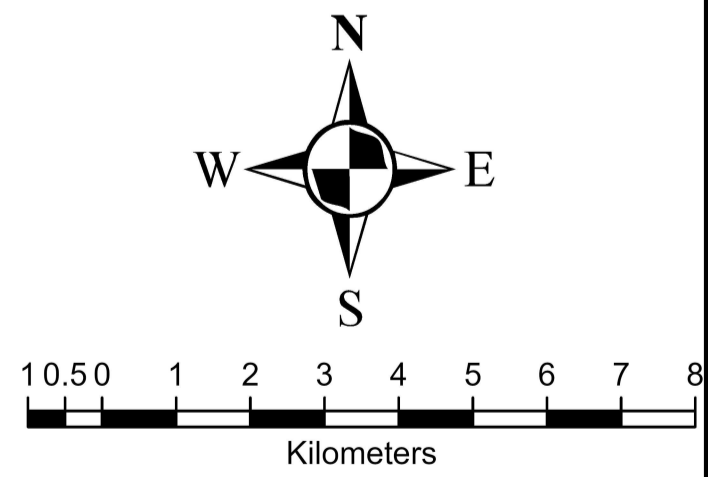
**40.7%**

# CHERANGANY/ CHEBORORWA WARD



### Legend

County Headquarters	National Trunk Roads
Major Centre	Primary Roads
Other Centres	Secondary Roads
ECD Centres (15)	Other Roads
EMC_Wards	EMC County Boundary
County Hospital (0)	Rivers
Sub-County Hospital (0)	EMC Elevation
Health Centre (0)	Value (m)
Dispensary (8)	3488
Mission Hospital (0)	914



Scale: 1:102,000

**Spatial Reference**  
 NAME: ARC 1960 UTM ZONE 36N  
 PCS: ARC 1960 UTM ZONE 36N  
 GCS: GCS ARC 1960  
 DATUM: ARC 1960  
 PROJECTION: TRANSVERSE MERCATOR  
 MAP UNITS: METER

EMC CARTOGRAPHY