

ARROR WARD HEALTH PROFILE

Situational Analysis

Arror Ward faces significant health challenges, as evidenced by the available health indicators. The ward ranks poorly in several critical areas such as skilled birth attendance (0.4%), health insurance coverage (8%), and teenage pregnancy rates (42.9%). High malaria incidence (148.2 per 1,000 population) and diarrheal disease prevalence further strain the healthcare system. Additionally, infrastructure gaps, including low latrine coverage (50%) and limited OPD utilization (0.7), indicate barriers to healthcare access and utilization. The high burden of preventable diseases such as URTIs (40.5%) and suspected malaria (59.0%) underscores the need for targeted interventions to improve healthcare service delivery and outcomes

I. Skilled Birth Attendance and Maternity Services

Indicator: Births attended by skilled health staff (Ward: 0.4%, County: 67.5%, Rank: 20)

- **Justification:** The extremely low percentage of skilled birth attendance highlights the urgent need for improved maternity services.
- **Proposed Interventions:**
 - **Construction of Modern Maternity (Ksh. 3,000,000)** at Kapchemuta Dispensary to ensure safe deliveries.
 - **Procurement of assorted medical equipment (Ksh. 6,000,000)** to enhance maternal healthcare services.
 - **Mama Penda Kits (Ksh. 2,500,000 annually)** to encourage facility-based deliveries.
 - **Community Health Volunteers (CHPs) Performance Incentives (Ksh. 1,200,000)** to promote maternal health awareness.

2. Immunization Coverage

Indicator: Proportion of children fully immunized (Ward: 63.7%, County: 73.3%, Rank: 8)

- **Justification:** Despite a relatively better ranking, immunization rates still fall below national targets.
- **Proposed Interventions:**
 - **Outreach programs (Ksh. 2,500,000 annually)** to increase access to immunization.
 - **Automation and ICT equipment (Ksh. 3,000,000)** to enhance immunization data management and follow-ups.
 - **CHPs Capacity Building (Ksh. 2,500,000)** to support immunization efforts.

3. Water, Sanitation, and Hygiene (WASH)

Indicators:

- Latrine Coverage (Ward: 50%, County: 73.9%, Rank: 20)
- Handwashing Coverage (Ward: 60%, County: 43.4%, Rank: 4)
- Diarrheal Disease Incidence (Ward: 2.4%, County: 8.4%, Rank: 12)
- **Justification:** Low latrine coverage and high diarrheal disease incidence indicate a need for improved WASH infrastructure.
- **Proposed Interventions:**
 - **Construction of toilets (Ksh. 300,000)** at Kapkata Dispensary to improve sanitation.
 - **Construction of placenta pits (Ksh. 300,000 each)** at various dispensaries to manage medical waste.
 - **Piped water connections (Ksh. 500,000 per facility)** to improve water access.
 - **Procurement of water tanks (Ksh. 300,000)** to ensure availability of safe water.

4. Malaria Control

Indicator: Malaria incidence per 1,000 population (Ward: 148.2%, County: 21.6%, Rank: 1)

- **Justification:** Malaria is a major public health concern, requiring urgent interventions.
- **Proposed Interventions:**
 - **Malaria control programs (Ksh. 2,500,000)** including IRS and net distribution.
 - **Procurement of drugs (Ksh. 2,500,000 annually)** to treat malaria effectively.
 - **Construction of laboratory (Ksh. 4,000,000)** to support malaria diagnostics.

5. Teenage Pregnancy

Indicator: Teenage pregnancy rate (10-19 years) (Ward: 42.9%, County: 18.6%, Rank: 1)

- **Justification:** The high teenage pregnancy rate demands comprehensive reproductive health interventions.
- **Proposed Interventions:**
 - **Support for reproductive health outreaches (Ksh. 2,500,000 annually).**
 - **Community sensitization programs through CHPs (Ksh. 1,200,000).**
 - **Provision of contraceptive services and awareness campaigns.**

6. Health Insurance Coverage

Indicator: Proportion covered by health insurance (Ward: 8%, County: 25%, Rank: 20)

- **Justification:** Low insurance coverage limits access to essential healthcare services.
- **Proposed Interventions:**
 - SHA/SHIF cover for vulnerable groups (Ksh. 1,000,000).
 - Community awareness programs to increase enrolment.

7. OPD Utilization Rate

Indicator: OPD Utilization Rate (Ward: 0.7, County: 1.9%, Rank: 18)

- **Justification:** Low utilization indicates poor health-seeking behavior and accessibility issues.
- **Proposed Interventions:**
 - **Construction of OPD blocks (Ksh. 3,000,000 each)** to improve access to outpatient services.
 - Procurement of drugs (Ksh. 2,500,000 annually).
 - Infrastructure improvements such as fencing, waiting bays, and staff housing.

8. Nutrition

Indicator: Prevalence of Stunting (Ward: 24.7%, County: 25.6%, Rank: 13)

- **Justification:** High stunting rates necessitate targeted nutrition interventions.
- **Proposed Interventions:**
 - Nutrition intervention programs (Ksh. 3,750,000 annually).
 - Procurement of nutrition supplements.
 - Capacity building of health staff on nutrition management.

9. Infrastructure and Equipment

Proposed Interventions:

- Automation through HMIS and ICT equipment (Ksh. 3,000,000).
- Construction of staff houses (Ksh. 2,500,000 each) to attract and retain healthcare workers.
- Procurement and installation of solar panels (Ksh. 500,000 each) to ensure reliable power supply.

10. Emergency Services

- Provision for an Emergency Transfer Centre (Ksh. 2,500,000).
- Procurement of motorbikes (Ksh. 600,000) for emergency response.



ARROR WARD HEALTH PROFILE

DEPARTMENT OF HEALTH SERVICES

POPULATION
9,583

MALE
4,825

FEMALE
4,758

HOUSEHOLDS
2,375

Key Indicators

Indicator	Ward	County	Rank
Births attended by skilled health staff	48%	67.5%	11
Incidence of diarrhoeal diseases	2.4%	8.4%	12
Proportion of children fully immunized	63.7%	73.3%	8
Latrine Coverage	50%	73.9%	20
Prevalence of Stunting	24.7%	25.6%	13
Prevalence of Wasting	4.9%	5.1%	13
Handwashing Coverage	60%	43.4%	4
Malaria incidence per 1,000 population	148.2%	21.6%	1
Eye diseases morbidity rate	1.6%	3.2%	20
Modern contraceptive prevalence rate	19.6%	35.2%	16
OPD Utilization Rate	0.7	1.9%	18
Proportion covered by a health insurance	8%	25%	20
Teenage pregnancy rate (10-19 years)	42.9%	18.6%	1

Top Diseases

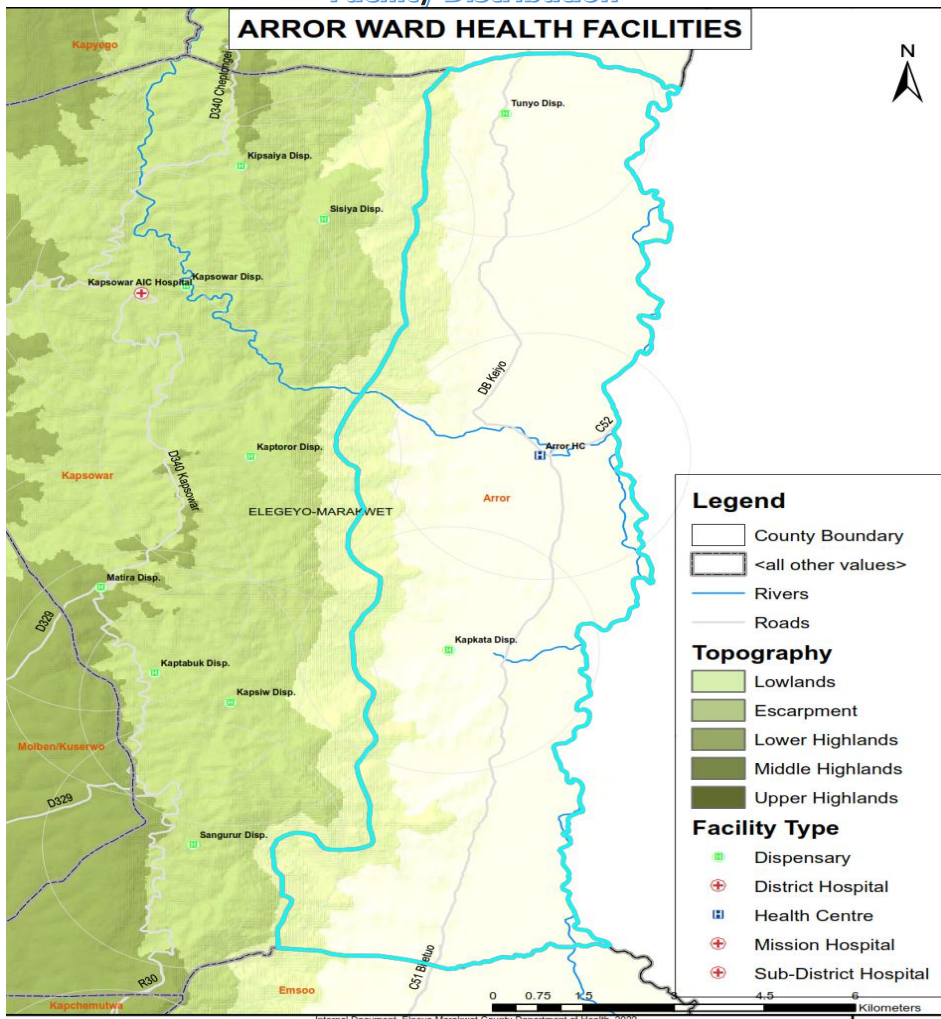
Disease	%	Cost
URTIs	40.5	1,480,250/-
Suspected Malaria	59.0	192,000/-
Confirmed Malaria	10.3	291,400/-
Disease of the skin	9.8	215,100/-
Diarrhoea	5.9	129,300/-
Pneumonia	3.5	228,600/-
Typhoid fever	3.4	866,250/-
Eye Infections	1.6	23,100/-
Urinary Tract Infection	1.0	77,550/-
Intestinal worms	0.2	21,000/-

Burden of Preventable Diseases

88% **3,323,650/-**

Facility Distribution

ARROR WARD HEALTH FACILITIES



List of Health Facilities

Health Facilities	Level
Arror Health Centre	3
Kapchemuta Dispensary	2
Kapkata Dispensary	2
Tunyo Dispensary	2

OPD Attendance

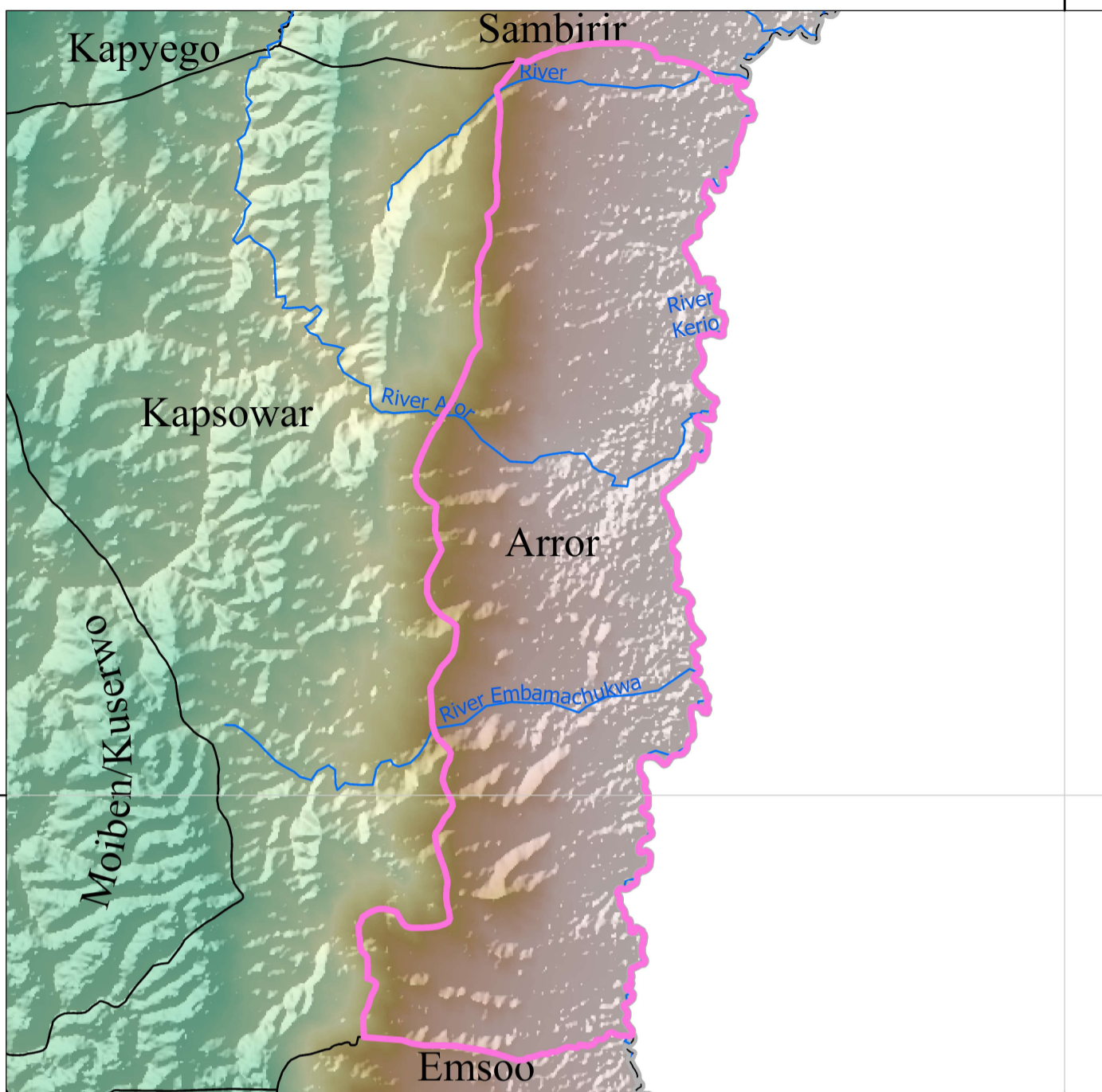
OPD attendance >5yrs Female	7,322
OPD attendance >5yrs Male	5,739
OPD Attendance <5yrs Female	1,770
OPD Attendance <5yrs Male	1,828
Total OPD attendance	16,659



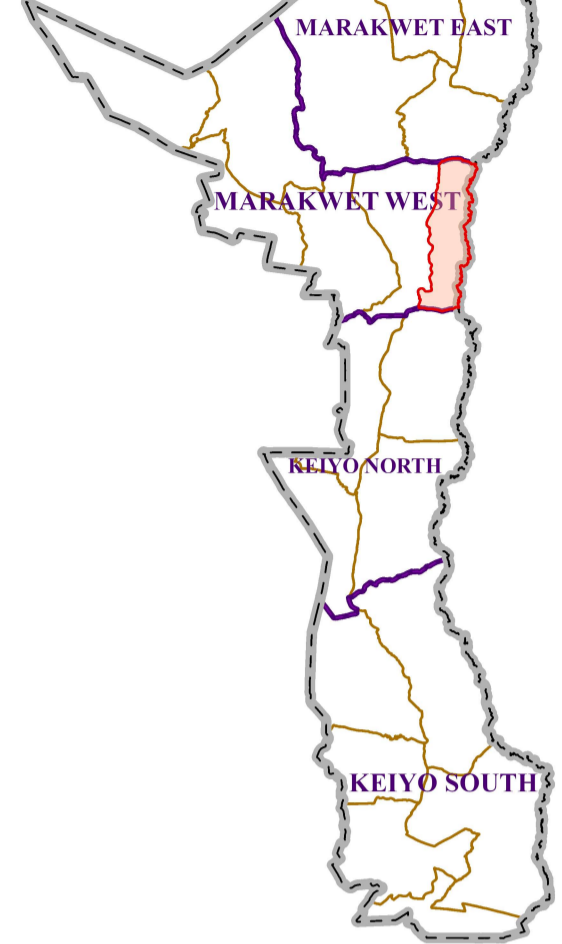
POVERTY LEVEL

40.9%

ARROR WARD



ELGEYO MARAKWET COUNTY



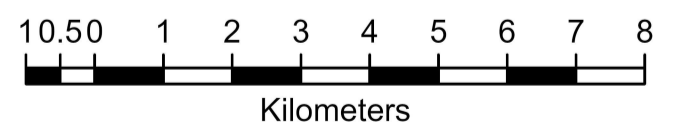
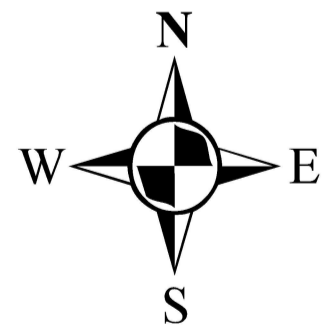
Legend

Towns/ Urban Centres Roads

- County Headquarters
- Major Centre
- Other Centres
- ECD Centres (9)
- National Trunk Roads
- Primary Roads
- Secondary Roads
- Other Roads

Health Facilities

- County Hospital (0)
- Sub-County Hospital (0)
- Health Centre (1)
- Dispensary (2)
- Mission Hospital (0)
- EMC_Wards
- EMC County Boundary
- Rivers
- EMC Elevation Value (m)
 - 3488
 - 914



Scale: 1:110,000

SPATIAL REFERENCE
 NAME: ARC 1960 UTM ZONE 36N
 PCS: ARC 1960 UTM ZONE 36N
 GCS: GCS ARC 1960
 DATUM: ARC 1960
 PROJECTION: TRANSVERSE MERCATOR
 MAP UNITS: METER

EMC CARTOGRAPHY