

Soy South Ward Health Profile

Situational Analysis

Soy South Ward faces notable health challenges that require strategic interventions to enhance healthcare access and service delivery. The ward ranks poorly in key health indicators such as skilled birth attendance (17.3%, rank 15), health insurance coverage (13%, rank 15), and modern contraceptive prevalence (17.1%, rank 17). Additionally, diarrheal disease incidence (15.3%, rank 7) and low latrine coverage (64%, rank 17) pose significant public health concerns. The OPD utilization rate (1.5, rank 11) indicates underutilization of healthcare services. However, the ward performs relatively better in handwashing coverage (56%, rank 5) and malaria control (13.8 per 1,000 population, rank 6). Targeted interventions are necessary to address these health gaps.

1. Skilled Birth Attendance and Maternity Services

Indicator: Births attended by skilled health staff (Ward: 17.3%, County: 67.5%, Rank: 15)

Justification: The low percentage of skilled birth attendance necessitates improved maternity services and infrastructure to enhance maternal and neonatal health outcomes.

Proposed Interventions:

- Completion of maternity units at Kalwal (Ksh. 1,000,000), Setano (Ksh. 4,000,000), Turesia (Ksh. 5,000,000), and NYS Chepsirei (Ksh. 4,000,000) dispensaries.
- Procurement of assorted medical equipment (Ksh. 6,000,000) to enhance maternity services.
- Incentives for CHVs (Ksh. 1,632,000) to promote facility-based deliveries.
- Community awareness and education campaigns (Ksh. 3,000,000) to encourage skilled birth attendance.

2. Immunization Coverage

Indicator: Proportion of children fully immunized (Ward: 73.7%, County: 73.3%, Rank: 6)

Justification: Despite a relatively better ranking, efforts must be made to sustain and improve immunization rates.

Proposed Interventions:

- Automation through ICT equipment at health facilities (Ksh. 500,000 per facility) to track immunization progress.
- CHV training and outreach programs (Ksh. 2,500,000 annually).
- Procurement of cold storage medical equipment (Ksh. 2,500,000).
- Community mobilization and sensitization campaigns (Ksh. 2,000,000).

3. Water, Sanitation, and Hygiene (WASH)

Indicators:

- Latrine Coverage (Ward: 64%, County: 73.9%, Rank: 17)
- Diarrheal Disease Incidence (Ward: 15.3%, County: 8.4%, Rank: 7)

Justification: Poor sanitation and high diarrheal disease rates highlight the need for improved WASH infrastructure.

Proposed Interventions:

- Construction of burning chambers in multiple facilities (Ksh. 1,000,000 each).
- Procurement and installation of water tanks (Ksh. 100,000 - 300,000 per facility).
- Construction of toilets for patients and staff (Ksh. 300,000 each).
- Public health education programs on hygiene practices (Ksh. 2,500,000).

4. Malaria Control

Indicator: Malaria incidence per 1,000 population (Ward: 13.8%, County: 21.6%, Rank: 6)

Justification: Malaria control efforts must continue to prevent resurgence.

Proposed Interventions:

- Procurement of drugs (Ksh. 2,500,000 annually).
- X-ray unit construction at Flourspar Health Centre (Ksh. 3,000,000).
- CHV training on malaria prevention (Ksh. 2,500,000).
- Distribution of insecticide-treated nets (Ksh. 5,000,000).

5. Teenage Pregnancy

Indicator: Teenage pregnancy rate (10-19 years) (Ward: 7.3%, County: 18.6%, Rank: 20)

Justification: Addressing reproductive health gaps is crucial to sustain the ward's positive ranking.

Proposed Interventions:

- Community sensitization and outreach programs (Ksh. 2,500,000 annually).
- Procurement of Linda Kits (Ksh. 2,500,000 annually).
- Enhanced youth-friendly services at health facilities.
- School-based reproductive health education programs (Ksh. 3,000,000).

6. Health Insurance Coverage

Indicator: Proportion covered by health insurance (Ward: 13%, County: 25%, Rank: 15)

Justification: Low insurance coverage limits healthcare access and financial protection.

Proposed Interventions:

- SHA/SHIF coverage for vulnerable groups (Ksh. 1,000,000).
- Public awareness programs on SHA/SHIF benefits.
- Community-based enrollment drives (Ksh. 2,000,000).

7. OPD Utilization Rate

Indicator: OPD Utilization Rate (Ward: 1.5, County: 1.9, Rank: 11)

Justification: Increasing OPD utilization is vital to improve access to primary healthcare services.

Proposed Interventions:

- Construction of OPD blocks at multiple dispensaries (Ksh. 6,000,000 each).
- Facility renovations (Ksh. 5,000,000).
- Procurement of essential drugs (Ksh. 25,000,000 annually).
- Community outreach programs to raise awareness (Ksh. 3,000,000).

8. Nutrition

Indicator: Prevalence of Stunting (Ward: 25%, County: 25.6%, Rank: 8)

Justification: High stunting rates require targeted nutrition programs.

Proposed Interventions:

- Annual nutrition intervention programs (Ksh. 3,750,000).
- Supplementary feeding programs and food fortification.
- Nutrition education for mothers and caregivers (Ksh. 2,000,000).

9. Infrastructure and Equipment

Proposed Interventions:

- Procurement of ICT equipment (Ksh. 500,000 per facility).
- Construction of staff housing (Ksh. 2,000,000 - 3,000,000 per facility).
- Procurement of ambulances and emergency response motorbikes (Ksh. 1,000,000).
- Maintenance and upgrading of existing health facilities (Ksh. 5,000,000).

10. Emergency Services

Proposed Interventions:

- Establishment of an Emergency Transfer Centre (Ksh. 2,500,000).
- Expansion of ambulance services and maintenance (Ksh. 1,000,000).
- Training of emergency response teams (Ksh. 3,000,000).



SOY SOUTH WARD HEALTH PROFILE

DEPARTMENT OF HEALTH SERVICES

POPULATION

24,855

MALE

12,562

FEMALE

12,293

HOUSEHOLDS

5,784

Key Indicators

Indicator	Ward	County	Rank
Births attended by skilled health staff	17.3%	67.5%	15
Incidence of diarrhoeal diseases	15.3%	8.4%	7
Proportion of children fully immunized	73.7%	73.3%	6
Latrine Coverage	64%	73.9%	17
Prevalence of Stunting	25%	25.6%	8
Prevalence of Wasting	5%	5.1%	8
Handwashing Coverage	56%	43.4%	5
Malaria incidence per 1,000 population	13.8%	21.6%	6
Eye diseases morbidity rate	4.1%	3.2%	2
Modern contraceptive prevalence rate	17.1%	35.2%	17
OPD Utilization Rate	1.5	1.9%	11
Proportion covered by a health insurance	13%	25%	15
Teenage pregnancy rate (10-19 years)	7.3%	18.6%	20

Top Diseases

Disease	%	Cost
URTIs	60.6	3,509,500/-
Disease of the skin	18.3	634,500/-
Diarrhoea	6.3	219,600/-
Pneumonia	4.6	479,250/-
Eye Infections	4.1	94,000/-
Urinary Tract Infection	2.6	329,450/-
Malaria	2.2	60,000/-
Intestinal worms	1.2	28,900/-
Typhoid fever	0.1	52,500/-

Burden of Preventable Diseases

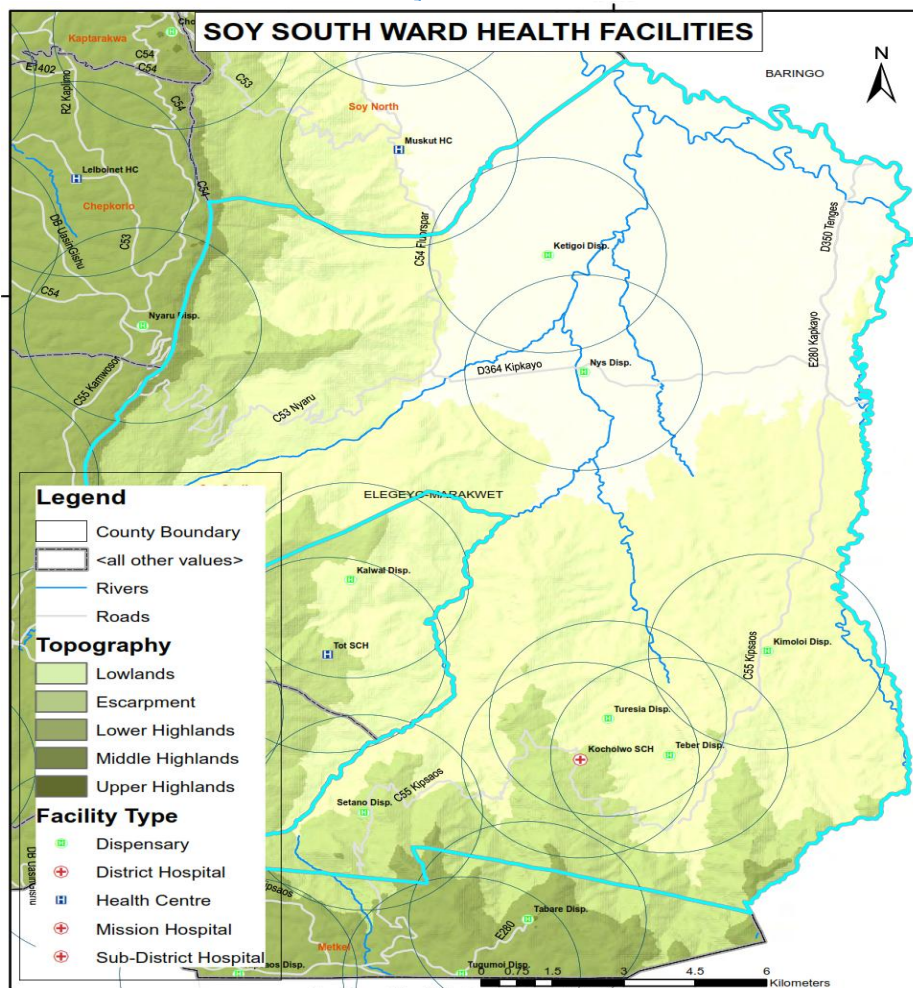
64%

5,408,000/-

List of Health Facilities

Health Facilities	Level
Flourspar Health Centre	3
Kalwal Dispensary	2
Kimoloi Dispensary	2
Kocholwo Sub-County Hospital	3
NYS Dispensary	2
Setano Dispensary	2
Simit Dispensary	2
Turesia Dispensary	2

Facility Distribution



OPD Attendance

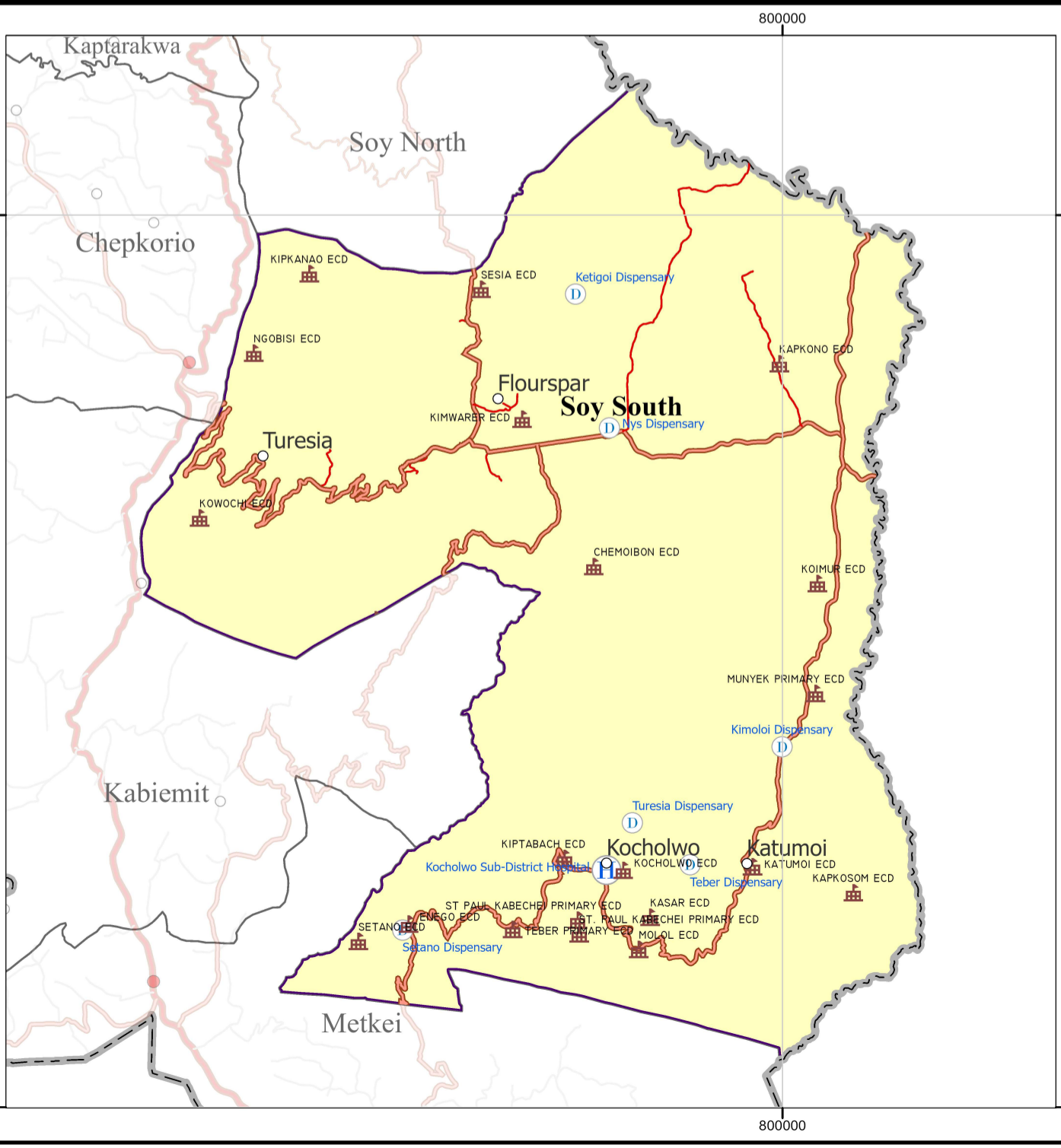
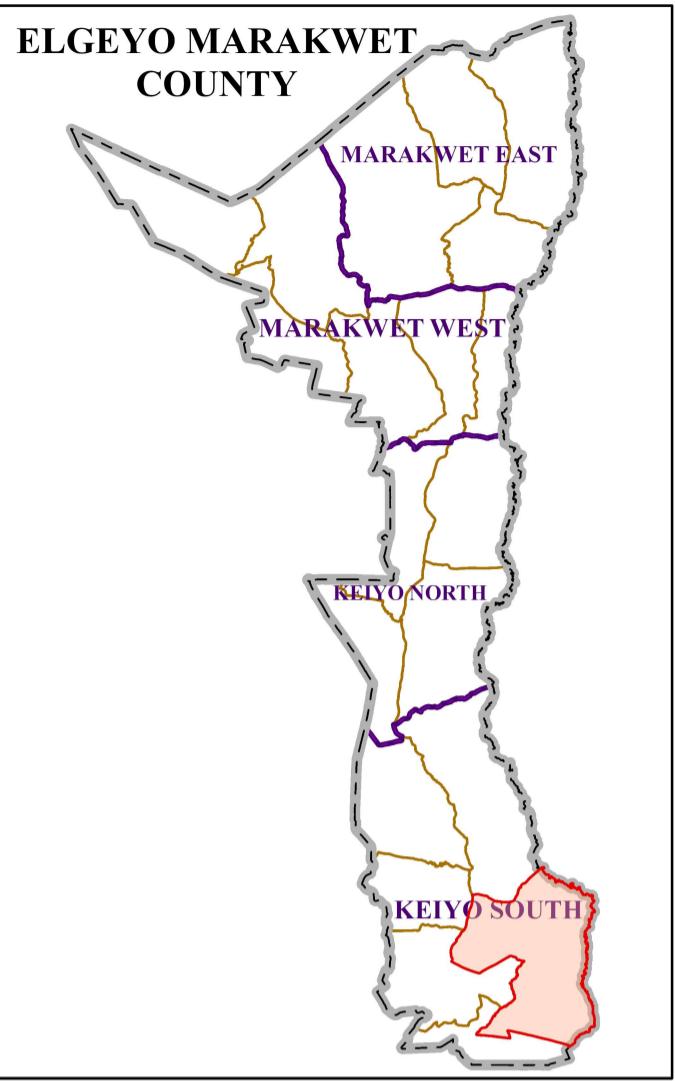
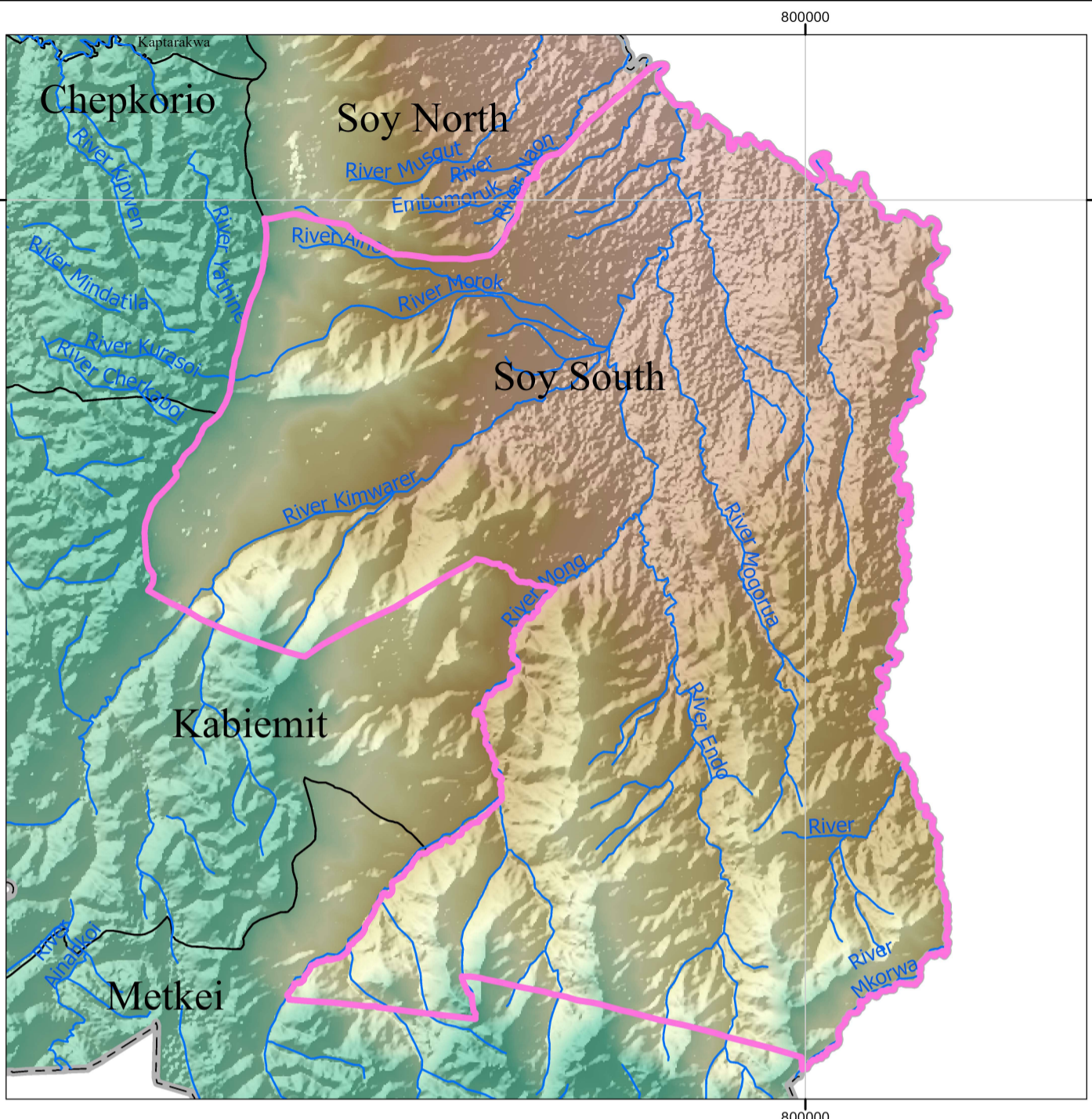
OPD attendance >5yrs Female	14,313
OPD attendance >5yrs Male	14,458
OPD Attendance <5yrs Female	3,598
OPD Attendance <5yrs Male	3,627
Total OPD attendance	35,996



POVERTY LEVEL

41.8%

SOY SOUTH WARD



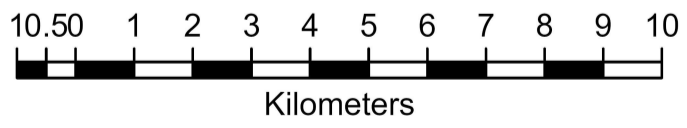
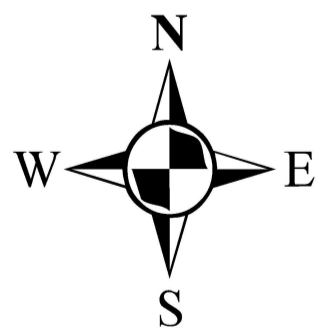
Legend

Towns/ Urban Centres Roads

- County Headquarters
- Major Centre
- Other Centres
- 🏠 ECD Centres (20)
- 🚚 National Trunk Roads
- 🛣️ Primary Roads
- 🛤️ Secondary Roads
- 🛤️ Other Roads
- 🏠 EMC_Wards
- 🗺️ EMC County Boundary
- 🌊 Rivers
- 📏 EMC Elevation Value (m)
- 3488
- 914

Health Facilities

- 🏥 County Hospital (0)
- 🏥 Sub-County Hospital (1)
- 🏥 Health Centre (0)
- 🏥 Dispensary (6)
- 🏥 Mission Hospital (0)



Scale: 1:129,000

SPATIAL REFERENCE
 NAME: ARC 1960 UTM ZONE 36N
 PCS: ARC 1960 UTM ZONE 36N
 GCS: GCS ARC 1960
 DATUM: ARC 1960
 PROJECTION: TRANSVERSE MERCATOR
 MAP UNITS: METER

EMC CARTOGRAPHY