

# Sengwer Ward Health Profile

## Situational Analysis

Sengwer Ward faces notable health challenges, with particular concern over maternal health, malnutrition, and water, sanitation, and hygiene (WASH) services. Key indicators show that the ward struggles with low rates of skilled birth attendance (29.7%), a high prevalence of stunting (28.4%), and a considerable incidence of diarrheal diseases (13.5%). Additionally, while immunization coverage is relatively high, the ward still ranks lower in handwashing coverage (50%) and has concerning gaps in health insurance coverage (14%). These factors highlight a need for targeted health interventions and infrastructure improvements to improve overall health outcomes.

## I. Skilled Birth Attendance and Maternity Services

**Indicator:** Births attended by skilled health staff (29.7%, County: 67.5%, Rank: 14)

- **Justification:** The low rate of skilled birth attendance underlines the need for better maternal healthcare infrastructure.
- **Proposed Interventions:**
  - Construction of a modern maternity wing (Ksh. 3,000,000) at Chesubet Dispensary to facilitate safe deliveries.
  - Procurement of assorted medical equipment (Ksh. 4,000,000) to improve maternal healthcare services.
  - Provision of Mama Penda Kits (Ksh. 2,500,000 annually) to encourage facility-based deliveries.
  - Performance incentives for Community Health Volunteers (CHVs) (Ksh. 1,872,000) to promote maternal health awareness.

## 2. Immunization and Child Health

**Indicator:** Proportion of children fully immunized (72.1%, County: 73.3%, Rank: 7)

- **Justification:** While immunization rates are relatively strong, improvements are still needed to ensure full coverage.
- **Proposed Interventions:**
  - Outreach programs (Ksh. 2,500,000 annually) to increase immunization uptake in underserved areas.
  - Automation through procurement of ICT equipment (Ksh. 200,000) to streamline immunization records and follow-up.
  - Strengthening CHV capacity (Ksh. 2,500,000) to support immunization efforts at the community level.

## 3. Water, Sanitation, and Hygiene (WASH)

**Indicators:**

- **Latrine Coverage:** 86% (County: 73.9%, Rank: 3)
- **Handwashing Coverage:** 50% (County: 43.4%, Rank: 7)
- **Diarrheal Disease Incidence:** 13.5% (County: 8.4%, Rank: 9)
- **Justification:** While latrine coverage is strong, handwashing and diarrheal diseases indicate a need for improved sanitation.
- **Proposed Interventions:**

- Construction of toilets (Ksh. 600,000) and placenta pits (Ksh. 300,000 each) at Sengwer and other dispensaries to improve sanitation.
- Procurement and installation of water tanks (Ksh. 300,000) and piped water connections (Ksh. 500,000 per facility) to enhance water access.
- Continued promotion of hygiene practices through CHVs to increase handwashing coverage.

#### 4. Malaria Control

**Indicator:** Malaria incidence per 1,000 population (12.8%, County: 21.6%, Rank: 7)

- **Justification:** Malaria remains a significant concern, and the proposed interventions aim to further reduce its incidence.
- **Proposed Interventions:**
  - Malaria control programs (Ksh. 2,500,000) including indoor residual spraying (IRS) and distribution of insecticide-treated nets.
  - Procurement of anti-malarial drugs (Ksh. 25,000,000 annually) to ensure effective treatment.
  - Construction of diagnostic facilities (e.g., X-ray rooms) (Ksh. 4,000,000) to support malaria diagnostics.

#### 5. Nutrition and Child Development

**Indicator:** Prevalence of Stunting (28.4%, County: 25.6%, Rank: 2)

- **Justification:** High rates of stunting indicate a significant gap in addressing malnutrition.
- **Proposed Interventions:**
  - Nutrition intervention programs (Ksh. 3,750,000 annually) to improve maternal and child nutrition.
  - Provision of nutritional supplements and fortified foods for children and pregnant women.
  - Capacity building of health staff on the management of malnutrition and related conditions.

#### 6. Reproductive Health and Family Planning

**Indicator:** Modern contraceptive prevalence rate (29.1%, County: 35.2%, Rank: 11)

- **Justification:** The ward has room for improvement in reproductive health, especially family planning services.
- **Proposed Interventions:**
  - Support for reproductive health outreaches (Ksh. 2,500,000 annually) to increase awareness and access to services.
  - Provision of contraceptive methods and educational programs through CHVs (Ksh. 1,200,000).

#### 7. Health Insurance Coverage

**Indicator:** Proportion covered by health insurance (14%, County: 25%, Rank: 14)

- **Justification:** Low health insurance coverage limits access to essential services, especially for vulnerable groups.
- **Proposed Interventions:**

- SHA/SHIF coverage for vulnerable populations such as PWDs and the elderly (Ksh. 1,000,000).
- Community awareness campaigns to increase health insurance enrolment.

## **8. Emergency Medical Services and Transport**

**Indicator:** OPD Utilization Rate (1.0, County: 1.9%, Rank: 16)

- **Justification:** Low OPD utilization points to access and awareness issues regarding available health services.
- **Proposed Interventions:**
  - Construction of OPD blocks at key dispensaries (Ksh. 3,000,000 per facility) to increase access to outpatient services.
  - Procurement of ambulances (Ksh. 6,000,000) to improve emergency response capabilities.
  - Expansion of health facilities (e.g., Kipsambach Dispensary Ksh. 6,000,000) and recruitment of health interns (Ksh. 2,400,000) to improve healthcare delivery.

## **9. Health Infrastructure and Capacity Building**

- **Proposed Interventions:**
  - Automation through ICT (Ksh. 5,000,000) for all health facilities, including equipment to enhance service delivery.
  - Construction of staff houses (Ksh. 5,000,000 per dispensary) to improve staff retention.
  - Renovation and expansion of existing facilities to meet growing population needs.



# SENGWER WARD HEALTH PROFILE

DEPARTMENT OF HEALTH SERVICES

**POPULATION**  
**25,731**

**MALE**  
**12,840**

**FEMALE**  
**12,890**

**HOUSEHOLDS**  
**5,523**

## Key Indicators

Indicator	Ward	County	Rank
Births attended by skilled health staff	29.7%	67.5%	14
Incidence of diarrhoeal diseases	13.5%	8.4%	9
Proportion of children fully immunized	72.1%	73.3%	7
Latrine Coverage	86%	73.9%	3
Prevalence of Stunting	28.4%	25.6%	2
Prevalence of Wasting	5.7%	5.1%	2
Handwashing Coverage	50%	43.4%	7
Malaria incidence per 1,000 population	12.8%	21.6%	7
Eye diseases morbidity rate	2.7%	3.2%	11
Modern contraceptive prevalence rate	29.1%	35.2%	11
OPD Utilization Rate	1.0	1.9%	16
Proportion covered by a health insurance	14%	25%	14
Teenage pregnancy rate (10-19 years)	26.3%	18.6%	5

## Top Diseases

Disease	%	Cost
URTIs	61.6	4,879,750/-
Pneumonia	9.4	1,339,650/-
Diarrhoea	8.3	396,450/-
Malaria	6.5	82,800/-
Disease of the skin	5.7	269,250/-
Urinary Tract Infection	2.9	501,600/-
Eye Infections	2.7	87,000/-
Typhoid fever	2.4	1,331,750/-
Intestinal worms	0.4	12,700/-

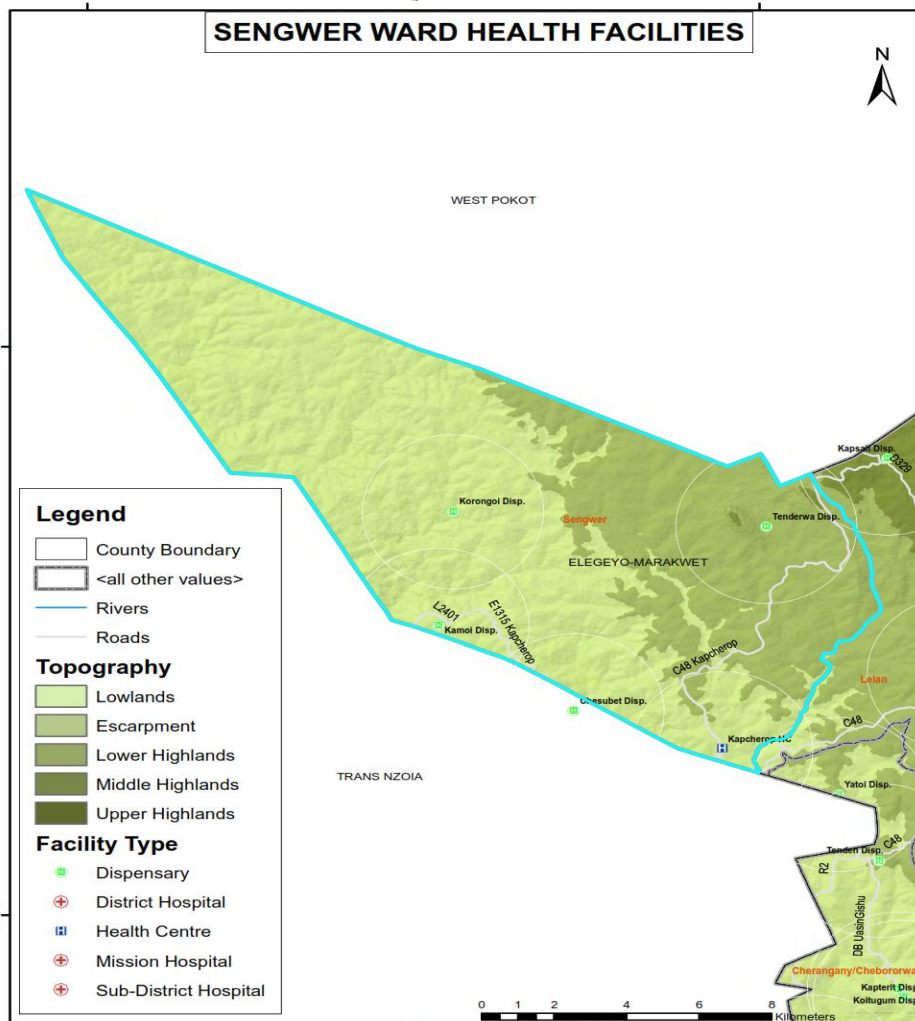
## Burden of Preventable Diseases

**63%** **8,900,950/-**

## List of Health Facilities

Health Facilities	Level
Chesubet Dispensary	2
Kamoi Dispensary	2
Kapcherop Health centre	3
Kapterit Dispensary	2
Korongoi Dispensary	2
Labot Dispensary	2

## Facility Distribution



## OPD Attendance

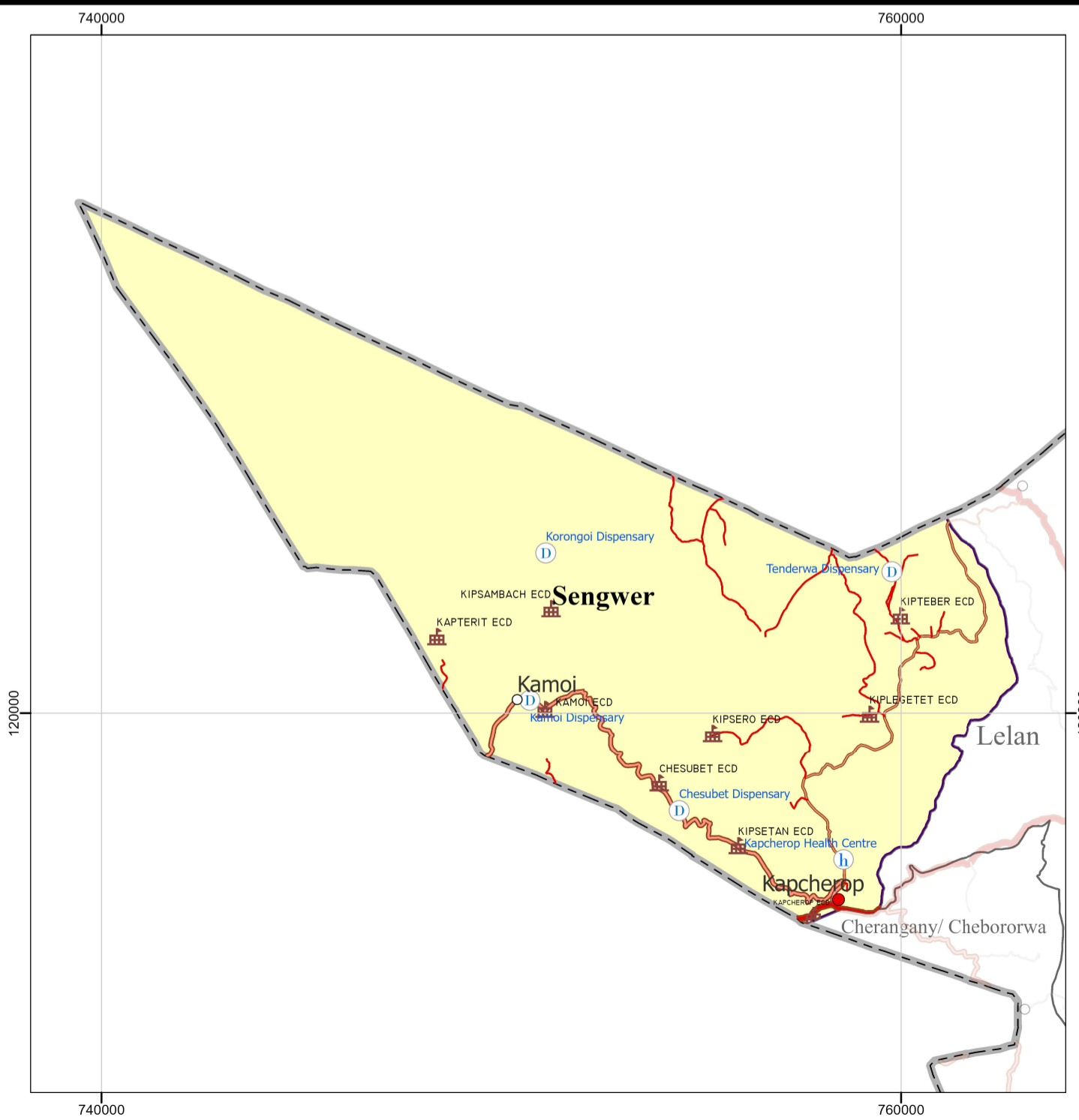
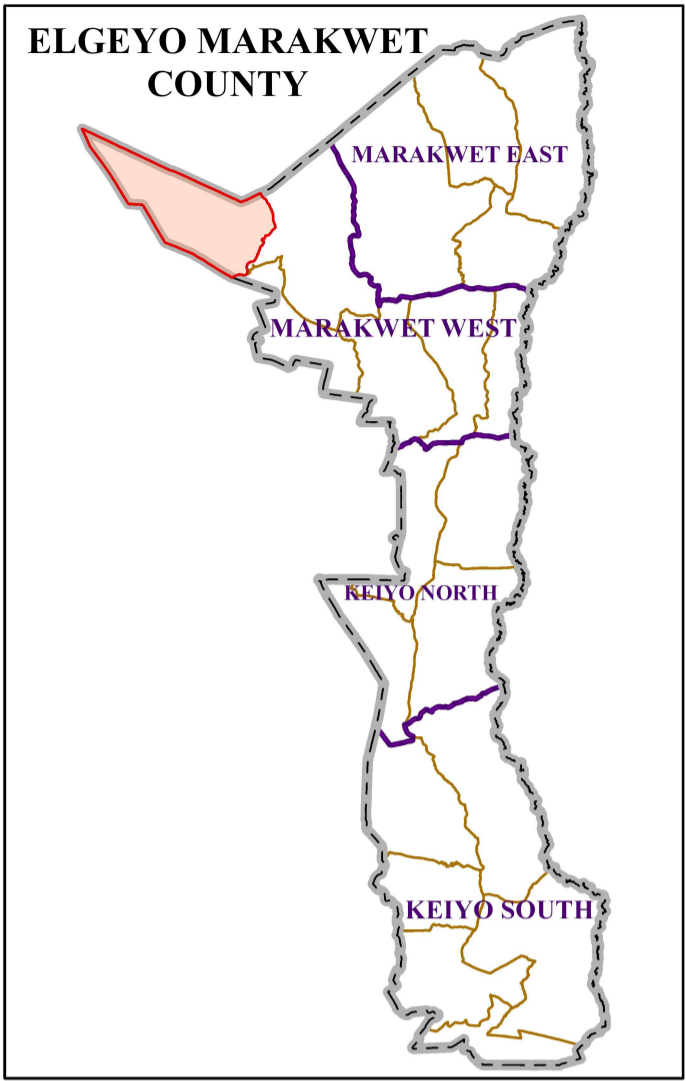
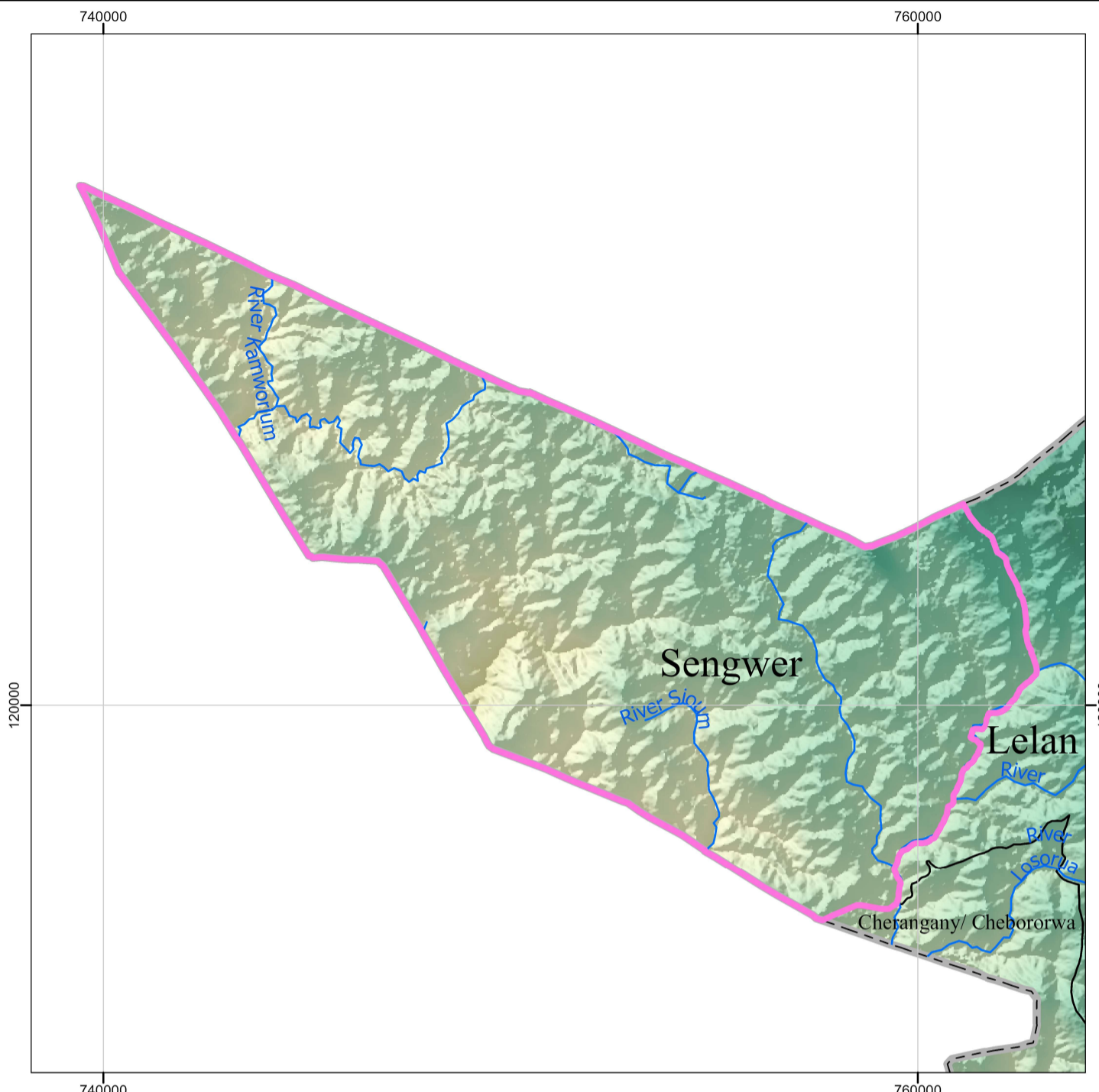
OPD attendance >5yrs Female	21,620
OPD attendance >5yrs Male	16,784
OPD Attendance <5yrs Female	6,527
OPD Attendance <5yrs Male	5,265
<b>Total OPD attendance</b>	<b>50,196</b>



**POVERTY LEVEL**

**47.5%**

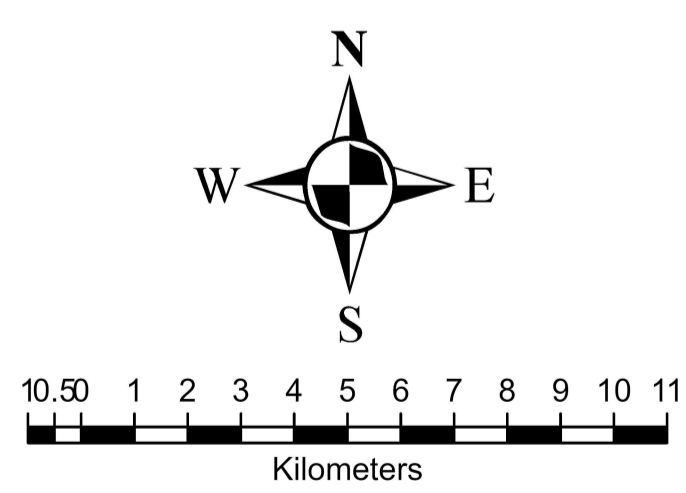
# SENGWER WARD



### Legend

**Towns/ Urban Centres Roads**

- County Headquarters
- Major Centre
- Other Centres
- 🏠 ECD Centres (9)
- 🏥 County Hospital (0)
- 🏥 Sub-County Hospital (0)
- 🏥 Health Centre (1)
- 🏥 Dispensary (4)
- 🏥 Mission Hospital (0)
- 🛣️ National Trunk Roads
- 🛣️ Primary Roads
- 🛣️ Secondary Roads
- 🛣️ Other Roads
- 🏠 EMC\_Wards
- 🏠 EMC County Boundary
- 🌊 Rivers
- 📏 EMC Elevation
- Value (m)
- 3488
- 914



**SPATIAL REFERENCE**  
 NAME: ARC 1960 UTM ZONE 36N  
 PCS: ARC 1960 UTM ZONE 36N  
 GCS: GCS ARC 1960  
 DATUM: ARC 1960  
 PROJECTION: TRANSVERSE MERCATOR  
 MAP UNITS: METER