

Moiben/Kuserwo Ward Health Profile

Situational Analysis

Moiben/Kuserwo Ward faces several health and infrastructure challenges, but it also demonstrates promising indicators in certain areas, such as skilled birth attendance (93%) and OPD utilization rate (2.7). However, there are still significant issues in areas such as the prevalence of stunting (24.6%) and wasting (4.9%), as well as relatively high teenage pregnancy rates (22.8%). The incidence of malaria (3%) and diarrheal diseases (0.5%) are also critical health concerns that require attention. Additionally, many facilities still face infrastructure gaps, including inadequate maternity services, limited water supply, and insufficient sanitation coverage. Given these challenges, a comprehensive intervention strategy is necessary to address both healthcare delivery and preventive measures to improve the health outcomes for the residents.

I. Skilled Birth Attendance and Maternity Services

Indicator: Births attended by skilled health staff (Ward: 93%, County: 67.5%, Rank: 4)

- **Justification:** While the ward ranks high in skilled birth attendance, the expansion and upgrading of maternity facilities are crucial to sustain and improve maternal health outcomes.
 - **Proposed Interventions:**
 - **Construction of Maternity Wards** at Bungwet Dispensary (Ksh. 3,000,000), Chebulbai Dispensary (Ksh. 3,000,000), and Kaplenge Dispensary (Ksh. 3,000,000) to ensure adequate delivery facilities.
 - **Procurement of assorted medical equipment** (Ksh. 4,000,000 at Bungwet, Ksh. 3,000,000 at Chebulbai, and Ksh. 5,000,000 at Kaplenge) to enhance maternal healthcare services.
 - **Mama Penda Kits** (Ksh. 2,500,000 annually) to encourage more women to deliver in health facilities.
 - **Community Health Volunteers (CHVs)** performance incentives (Ksh. 15,600,000 annually) to support maternal health awareness campaigns.
-

2. Immunization Coverage

Indicator: Proportion of children fully immunized (Ward: 80.6%, County: 73.3%, Rank: 5)

- **Justification:** The ward has a strong immunization coverage but still requires continuous efforts to sustain and improve vaccination rates, particularly in remote areas.
- **Proposed Interventions:**
 - **Outreach programs** (Ksh. 2,500,000 annually) to ensure every child is immunized, particularly in underserved areas.
 - **Capacity building of CHVs** (Ksh. 2,500,000) to empower them to educate communities on the importance of immunization.

3. Water, Sanitation, and Hygiene (WASH)

Indicators:

- Latrine Coverage (Ward: 82%, County: 73.9%, Rank: 6)
 - Handwashing Coverage (Ward: 60%, County: 43.4%, Rank: 2)
 - Diarrheal Disease Incidence (Ward: 0.5%, County: 8.4%, Rank: 18)
 - **Justification:** While latrine and handwashing coverage in the ward are commendable, high diarrheal disease incidence suggests that sanitation and water access remain significant challenges.
 - **Proposed Interventions:**
 - **Construction of toilets** (Ksh. 600,000 at Bungwet, Ksh. 600,000 at Chebulbai, and Ksh. 500,000 at Cheptongei) to improve sanitation.
 - **Water supply and tank installations** (Ksh. 500,000 for Bungwet, Ksh. 300,000 for Chebulbai) to ensure a consistent clean water supply.
 - **Construction of placenta pits** (Ksh. 300,000 at various dispensaries) to improve medical waste management.
-

4. Malaria Control

Indicator: Malaria incidence per 1,000 population (Ward: 3%, County: 21.6%, Rank: 11)

- **Justification:** While the malaria incidence is low, further prevention strategies are needed to eliminate the disease's impact.
 - **Proposed Interventions:**
 - **Malaria control programs** (Ksh. 2,500,000) including indoor residual spraying (IRS) and mosquito net distribution.
 - **Procurement of malaria treatment drugs** (Ksh. 25,000,000 annually) to ensure effective treatment for all cases.
 - **Construction of modern laboratories** (Ksh. 3,000,000 at Bungwet, Ksh. 3,000,000 at Chebulbai) to improve diagnostics and surveillance.
-

5. Teenage Pregnancy

Indicator: Teenage pregnancy rate (10-19 years) (Ward: 22.8%, County: 18.6%, Rank: 7)

- **Justification:** The teenage pregnancy rate in the ward is concerning and requires multi-pronged approaches to reduce the incidence.
- **Proposed Interventions:**
 - **Support reproductive health outreaches** (Ksh. 2,500,000 annually) to provide education and services to teenagers.
 - **Community sensitization programs** (Ksh. 1,200,000 through CHVs) to educate communities on the dangers of early pregnancies.
 - **Provision of contraceptive services** (Ksh. 2,500,000 annually) and family planning education.

6. Health Insurance Coverage

Indicator: Proportion covered by health insurance (Ward: 27%, County: 25%, Rank: 4)

- **Justification:** Health insurance coverage is relatively good but can be improved, especially for vulnerable groups.
 - **Proposed Interventions:**
 - **SHA/SHIF cover for vulnerable groups** (Ksh. 1,000,000 for the elderly, PWDs, and vulnerable populations).
 - **Community awareness programs** (Ksh. 2,500,000 annually) to increase SHA/SHIF enrolment across the ward.
-

7. OPD Utilization Rate

Indicator: OPD Utilization Rate (Ward: 2.7, County: 1.9%, Rank: 2)

- **Justification:** The ward shows relatively high OPD utilization, indicating that residents seek care when needed. However, efforts to improve facility access and reduce wait times are necessary.
 - **Proposed Interventions:**
 - **Construction of modern OPD blocks** (Ksh. 3,000,000 each at Bungwet and Chebulbai) to improve access and reduce congestion.
 - **Procurement of drugs** (Ksh. 25,000,000 annually) to ensure that essential medicines are available.
 - **Infrastructure improvements** such as fencing, patient waiting areas, and staff housing to improve service delivery.
-

8. Nutrition

Indicator: Prevalence of Stunting (Ward: 24.6%, County: 25.6%, Rank: 18)

- **Justification:** The prevalence of stunting is high and requires targeted nutritional interventions.
- **Proposed Interventions:**
 - **Nutrition intervention programs** (Ksh. 3,750,000 annually) to address malnutrition and promote healthy growth.
 - **Procurement of nutrition supplements** (Ksh. 2,500,000) to support at-risk populations.
 - **Capacity building of health staff** (Ksh. 2,500,000 annually) on managing and treating malnutrition.

9. Infrastructure and Equipment

- **Justification:** Continued expansion and improvement of healthcare infrastructure are essential for improving service delivery across the ward.
- **Proposed Interventions:**
 - **Automation through ICT equipment** (Ksh. 3,000,000) at facilities such as Bungwet, Chebulbai, and Cheptongei to improve healthcare management and service delivery.
 - **Construction of staff houses** (Ksh. 5,000,000 each) to attract and retain qualified healthcare personnel.
 - **Procurement of ambulances** (Ksh. 6,000,000) to improve emergency care response.
 - **Construction of laboratories** (Ksh. 3,000,000) at Bungwet, Chebulbai, and Kaplenge to improve diagnostic capacity.



MOIBEN/KUSERWO WARD HEALTH PROFILE

DEPARTMENT OF HEALTH SERVICES

POPULATION
27,180

MALE
13,628

FEMALE
13,552

HOUSEHOLDS
5,775

Key Indicators

Indicator	Ward	County	Rank
Births attended by skilled health staff	93%	67.5%	4
Incidence of diarrhoeal diseases	0.5%	8.4%	18
Proportion of children fully immunized	80.6%	73.3%	5
Latrine Coverage	82%	73.9%	6
Prevalence of Stunting	24.6%	25.6%	18
Prevalence of Wasting	4.9%	5.1%	18
Handwashing Coverage	60%	43.4%	2
Malaria incidence per 1,000 population	3%	21.6%	11
Eye diseases morbidity rate	3.3%	3.2%	4
Modern contraceptive prevalence rate	29.5%	35.2%	10
OPD Utilization Rate	2.7	1.9%	2
Proportion covered by a health insurance	27%	25%	4
Teenage pregnancy rate (10-19 years)	22.8%	18.6%	7

Top Diseases

Disease	%	Cost
URTIs	63.0	5,758,750/-
Disease of the skin	6.2	337,050/-
Diarrhoea	6.8	372,750/-
Pneumonia	9.5	1,555,650/-
Urinary Tract Infection	3.9	784,300/-
Eye Infections	3.3	120,800/-
Malaria	4.1	20,200/-
Typhoid fever	3.3	2,073,750/-

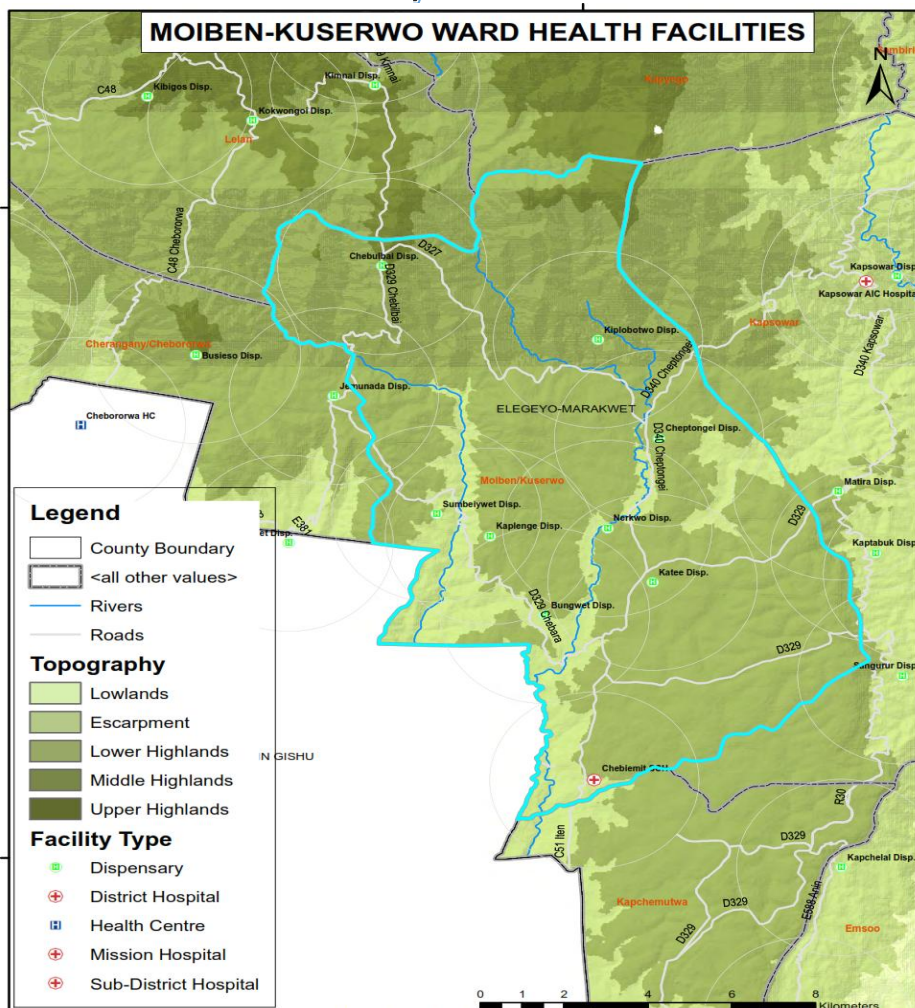
Burden of Preventable Diseases

55% **11,025,350/-**

List of Health Facilities

Health Facilities	Level
Bungwet Dispensary	2
Chebiemit Sub County Hospital	3B
Chebulbai Dispensary	2
Cheptongei Health Centre	3
Chogoo Dispensary	2
Jemunada Dispensary	2
Kaplenge Dispensary	2
Katee Dispensary	2
Kimnai Dispensary	2
Kiplobotwo Dispensary	2
Nerkwo Dispensary	2
Sumbeiywet Dispensary	2

Facility Distribution



OPD Attendance

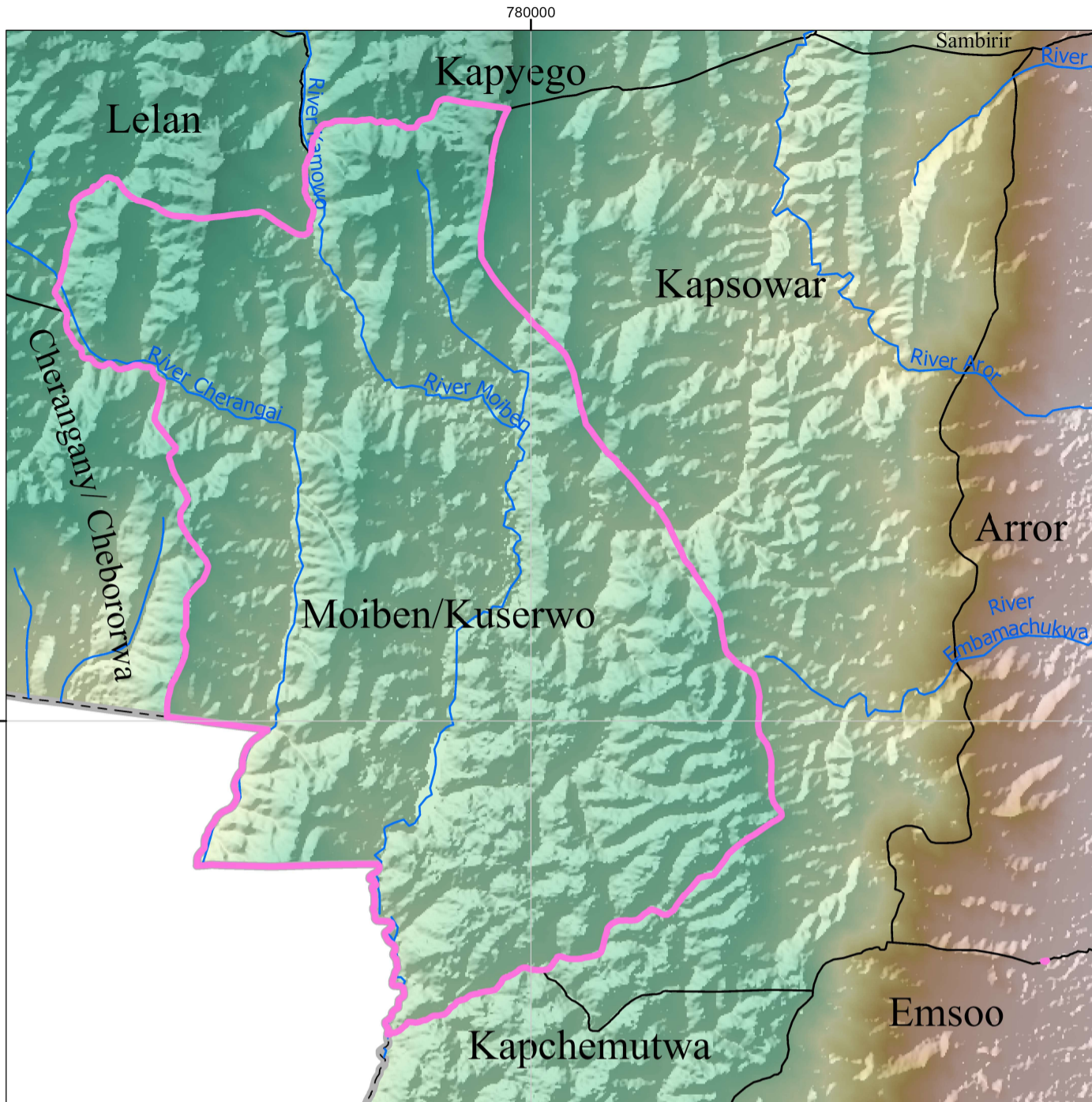
OPD attendance >5yrs Female	31,375
OPD attendance >5yrs Male	23,256
OPD Attendance <5yrs Female	6,170
OPD Attendance <5yrs Male	5,745
Total OPD attendance	66,546



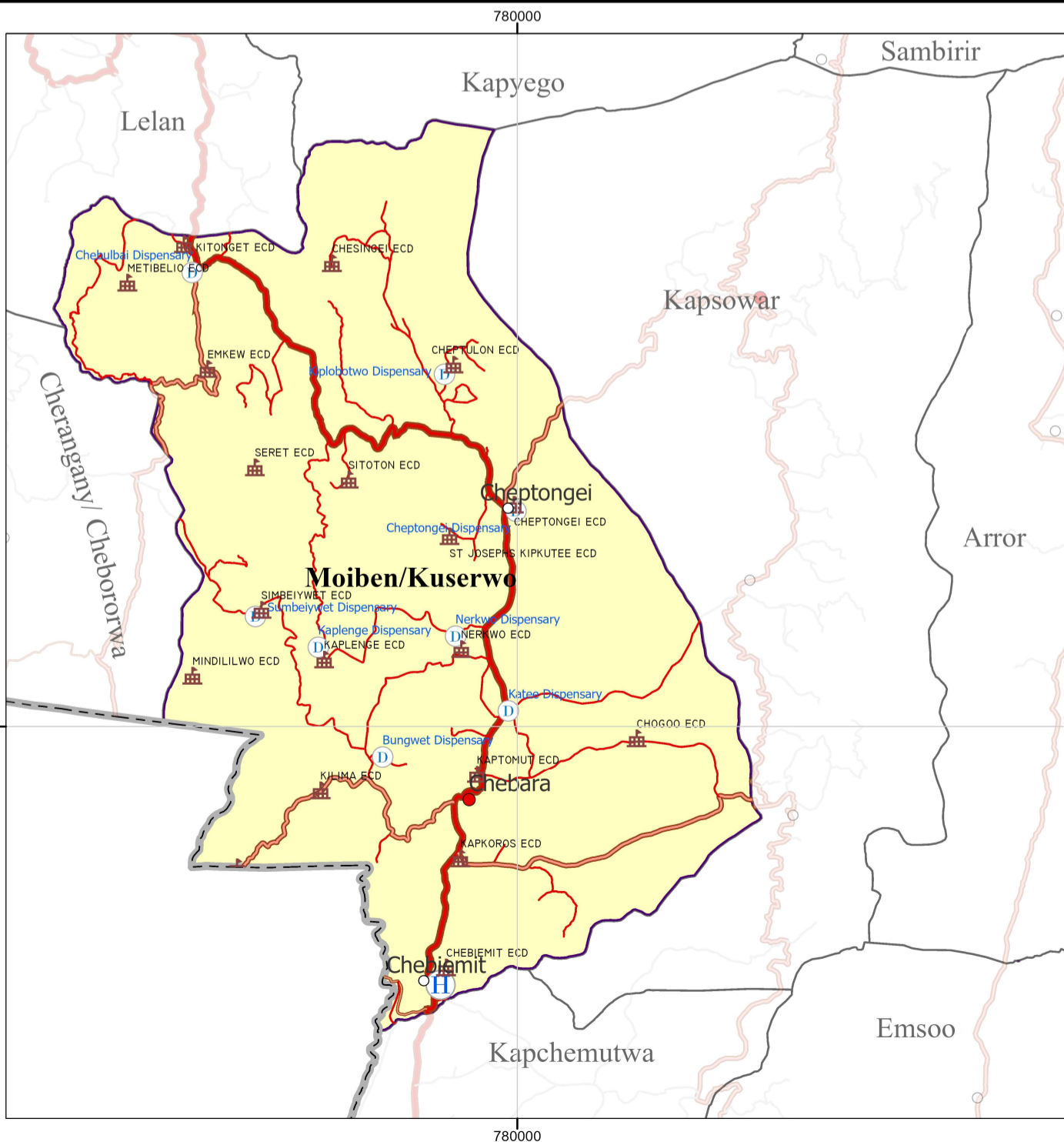
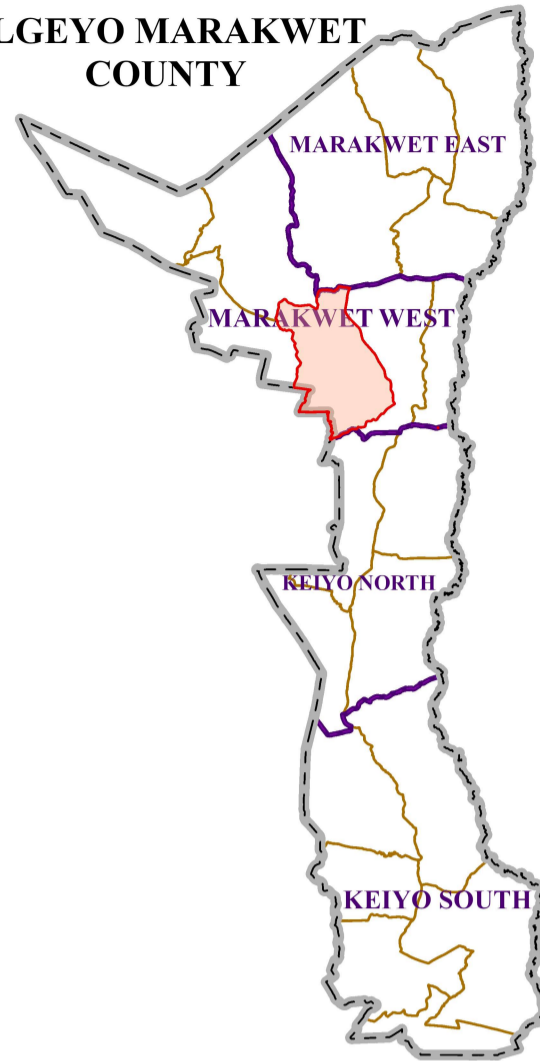
POVERTY LEVEL

41.1%

MOIBEN/KUSERWO WARD



ELGEYO MARAKWET COUNTY



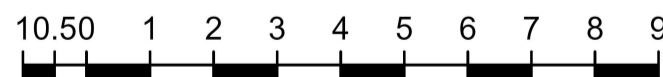
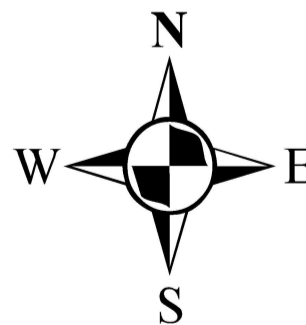
Legend

Towns/ Urban Centres Roads

- County Headquarters
- Major Centre
- Other Centres
- ECD Centres (18)
- National Trunk Roads
- Primary Roads
- Secondary Roads
- Other Roads

Health Facilities

- County Hospital (0)
- Sub-County Hospital (1)
- Health Centre (0)
- Dispensary (8)
- Mission Hospital (0)
- EMC_Wards
- EMC County Boundary
- Rivers
- EMC Elevation Value (m)
 - 3488
 - 914



Kilometers

Scale: 1:119,000

SPATIAL REFERENCE
 NAME: ARC 1960 UTM ZONE 36N
 PCS: ARC 1960 UTM ZONE 36N
 GCS: GCS ARC 1960
 DATUM: ARC 1960
 PROJECTION: TRANSVERSE MERCATOR
 MAP UNITS: METER

EMC CARTOGRAPHY