

Metkei Ward Health Profile

Situational Analysis

Metkei Ward, though exhibiting some positive health outcomes, faces significant challenges across several health indicators. These challenges are compounded by gaps in healthcare infrastructure, low utilization of health services, and limited access to modern medical technologies. Despite relatively high immunization rates (87.5% vs. county 73.3%) and handwashing coverage (60% vs. county 43.4%), the ward continues to struggle with key issues such as skilled birth attendance (31.6%), stunting prevalence (24.7%), and modern contraceptive prevalence (12.8%). There is also a notable incidence of eye diseases (2.6%), and a high rate of teenage pregnancies (13.1%) which necessitates urgent intervention. Health infrastructure is insufficient to meet the growing demand, and limited access to water and sanitation continues to hinder overall health improvements.

Key Health Challenges and Proposed Interventions

I. Skilled Birth Attendance and Maternity Services

- **Indicator:** Births attended by skilled health staff (Ward: 31.6%, County: 67.5%, Rank: 12)
- **Justification:** The low percentage of births attended by skilled staff underscores the need for better maternal health services and infrastructure.
- **Proposed Interventions:**
 - **Construction of a Modern Maternity Unit** at Kamwosor Sub County Hospital (Ksh. 3,000,000).
 - **Procurement of Assorted Medical Equipment** (Ksh. 6,000,000) to improve service delivery.
 - **Mama Penda Kits** to encourage facility-based deliveries (Ksh. 2,500,000 annually).
 - **Performance Incentives for Community Health Volunteers (CHVs)** to promote maternal health education (Ksh. 1,200,000 annually).

2. Immunization Coverage

- **Indicator:** Proportion of children fully immunized (Ward: 87.5%, County: 73.3%, Rank: 4)
- **Justification:** Immunization rates are high, but there is still room for improvement to achieve national goals.
- **Proposed Interventions:**
 - **Outreach Programs** to increase immunization coverage (Ksh. 2,500,000 annually).
 - **Automation and ICT Equipment** to enhance immunization data management (Ksh. 3,000,000).
 - **Capacity Building of CHVs** to enhance immunization campaigns (Ksh. 2,500,000).

3. Water, Sanitation, and Hygiene (WASH)

- **Indicators:**
 - Latrine Coverage (Ward: 74%, County: 73.9%, Rank: 10)
 - Handwashing Coverage (Ward: 60%, County: 43.4%, Rank: 3)
 - Diarrheal Disease Incidence (Ward: 1.1%, County: 8.4%, Rank: 16)
- **Justification:** While WASH indicators are relatively strong, there are still significant gaps in water access and sanitation facilities.
- **Proposed Interventions:**
 - **Construction of Toilets** at various dispensaries (Ksh. 300,000 per unit).
 - **Piped Water Connections** (Ksh. 500,000 per facility) to ensure consistent and safe water supply.
 - **Water Tank Installations** (Ksh. 300,000) to improve water access.
 - **CHV Education on Handwashing** (Ksh. 500,000) to reduce diarrheal disease prevalence.

4. Malaria Control

- **Indicator:** Malaria Incidence per 1,000 population (Ward: 0.4%, County: 21.6%, Rank: 19)
- **Justification:** Although the malaria incidence rate in the ward is low, continuous prevention and control efforts are critical.
- **Proposed Interventions:**
 - **Malaria Control Programs** including Indoor Residual Spray (IRS) and net distribution (Ksh. 2,500,000).
 - **Procurement of Malaria Treatment Drugs** (Ksh. 2,500,000 annually).

5. Teenage Pregnancy

- **Indicator:** Teenage Pregnancy Rate (Ward: 13.1%, County: 18.6%, Rank: 15)
- **Justification:** Teenage pregnancy remains a significant concern that requires urgent attention through reproductive health interventions.
- **Proposed Interventions:**
 - **Reproductive Health Outreach Programs** (Ksh. 2,500,000 annually) focusing on awareness and prevention.
 - **Support for CHV Programs** to educate and provide family planning services (Ksh. 12,000,000 annually).
 - **Provision of Contraceptive Services** and awareness campaigns (Ksh. 2,500,000 annually).

6. Health Insurance Coverage

- **Indicator:** Proportion Covered by Health Insurance (Ward: 15%, County: 25%, Rank: 12)
- **Justification:** Low health insurance coverage limits access to critical health services.
- **Proposed Interventions:**
 - **SHA/SHIF Coverage for Vulnerable Groups** (Ksh. 1,000,000) to increase health insurance enrollment, especially for the elderly and PWDs.
 - **Community Awareness Campaigns** to promote health insurance enrollment (Ksh. 500,000 annually).

7. Nutrition

- **Indicator:** Prevalence of Stunting (Ward: 24.7%, County: 25.6%, Rank: 15)
- **Justification:** Stunting remains a key concern, and addressing it requires targeted nutrition interventions.
- **Proposed Interventions:**
 - **Nutrition Education Programs** (Ksh. 3,750,000 annually) targeting caregivers and communities.
 - **Procurement of Nutritional Supplements** to support children and pregnant women.
 - **Capacity Building for Healthcare Providers** on effective nutrition management.

8. Infrastructure and Equipment

- **Proposed Interventions:**
 - **Construction of Staff Houses** at Kamwosor Sub County Hospital (Ksh. 1,000,000).
 - **Procurement and Installation of Solar Panels** (Ksh. 500,000) to ensure a reliable power supply.
 - **Automation and HMIS ICT Equipment** (Ksh. 3,000,000) to enhance data collection and reporting.

9. Emergency Services

- **Proposed Interventions:**
 - **Provision for an Emergency Transfer Centre** (Ksh. 2,500,000).
 - **Procurement of Motorbikes** (Ksh. 600,000) to enhance emergency response times.



METKEI WARD HEALTH PROFILE

DEPARTMENT OF HEALTH SERVICES

POPULATION
37,196

MALE
18,518

FEMALE
18,677

HOUSEHOLDS
7,762

Key Indicators

Indicator	Ward	County	Rank
Births attended by skilled health staff	31.6%	67.5%	12
Incidence of diarrhoeal diseases	1.1%	8.4%	16
Proportion of children fully immunized	87.5%	73.3%	4
Latrine Coverage	74%	73.9%	10
Prevalence of Stunting	24.7%	25.6%	15
Prevalence of Wasting	4.9%	5.1%	15
Handwashing Coverage	60%	43.4%	3
Malaria incidence per 1,000 population	0.4%	21.6%	19
Eye diseases morbidity rate	2.6%	3.2%	12
Modern contraceptive prevalence rate	12.8%	35.2%	20
OPD Utilization Rate	1.0	1.9%	15
Proportion covered by a health insurance	15%	25%	12
Teenage pregnancy rate (10-19 years)	13.1%	18.6%	15

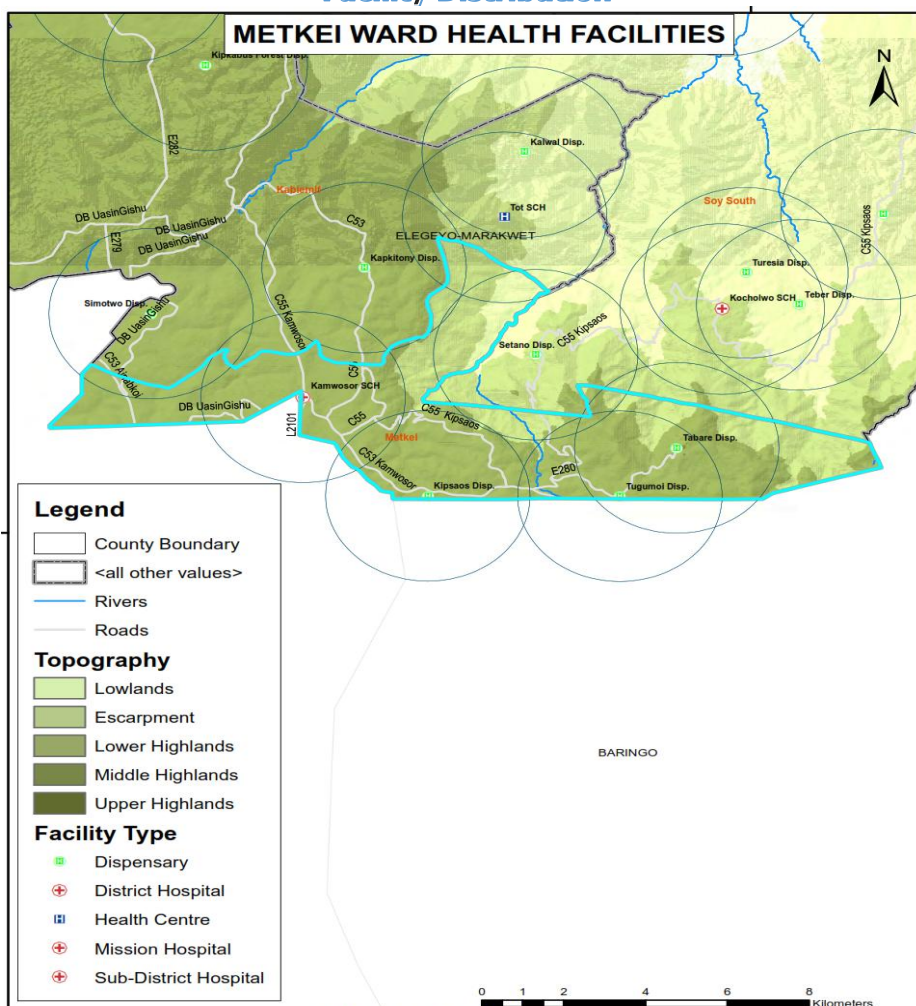
Top Diseases

Disease	%	Cost
URTIs	67.1	2,525,500/-
Disease of the skin	8.1	180,600/-
Diarrhoea	5.1	112,950/-
Pneumonia	12.2	829,800/-
Urinary Tract Infection	3.4	275,000/-
Eye Infections	2.6	38,600/-
Malaria	0.4	9,200/-
Typhoid fever	0.7	91,000/-
Jiggers Infestation	0.3	5,200/-
Intestinal worms	0.2	8,400/-

Burden of Preventable Diseases

60% **4,057,650/-**

Facility Distribution



List of Health Facilities

Health Facilities	Level
Chebusie Dispensary	2
Emis Dispensary	2
Kamwoor Sub County Hospital	3B
Kipsaos Dispensary	2
Metkei Community Dispensary	2
Tabare Dispensary	2
Tugumoi Dispensary	2

OPD Attendance

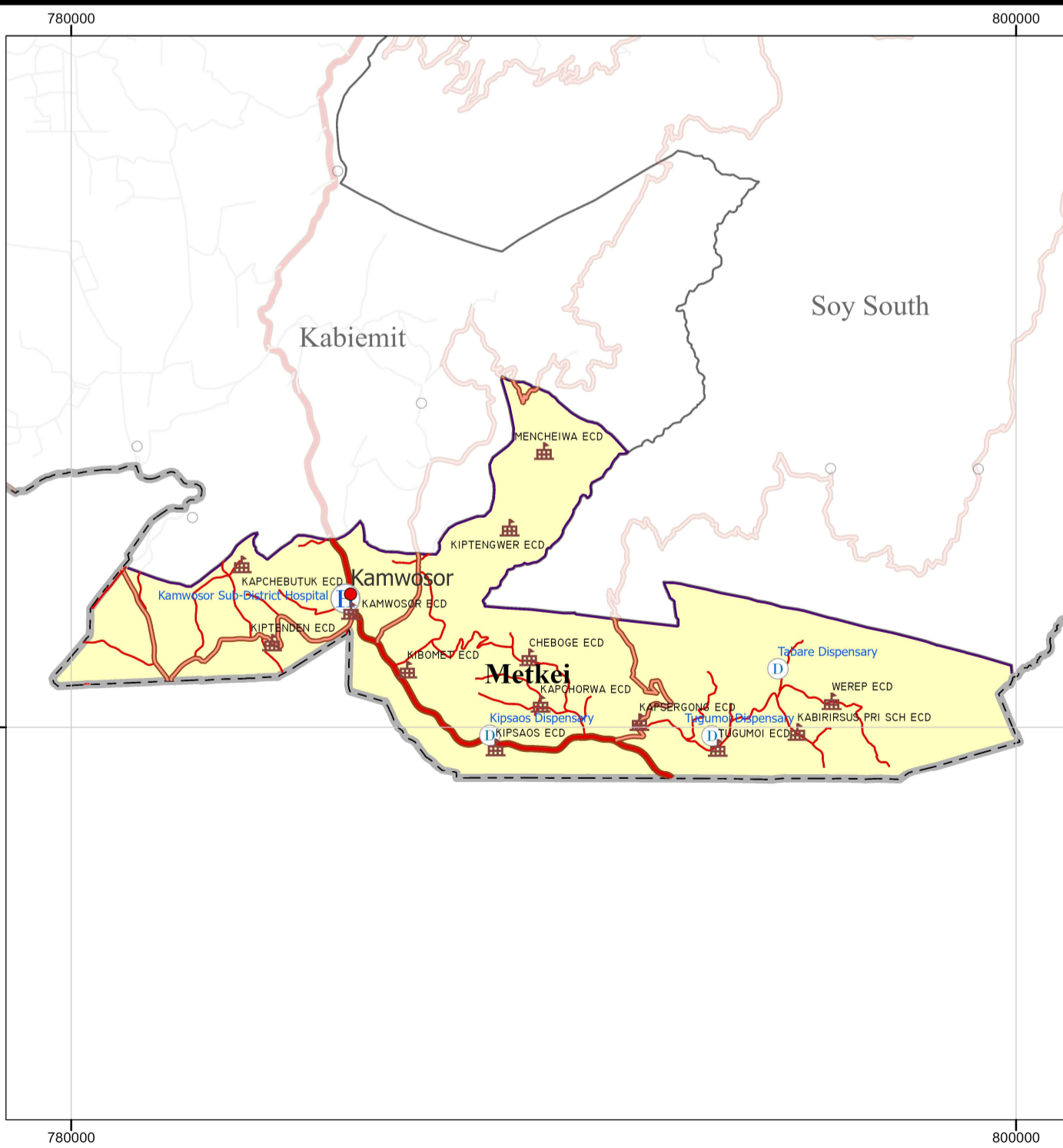
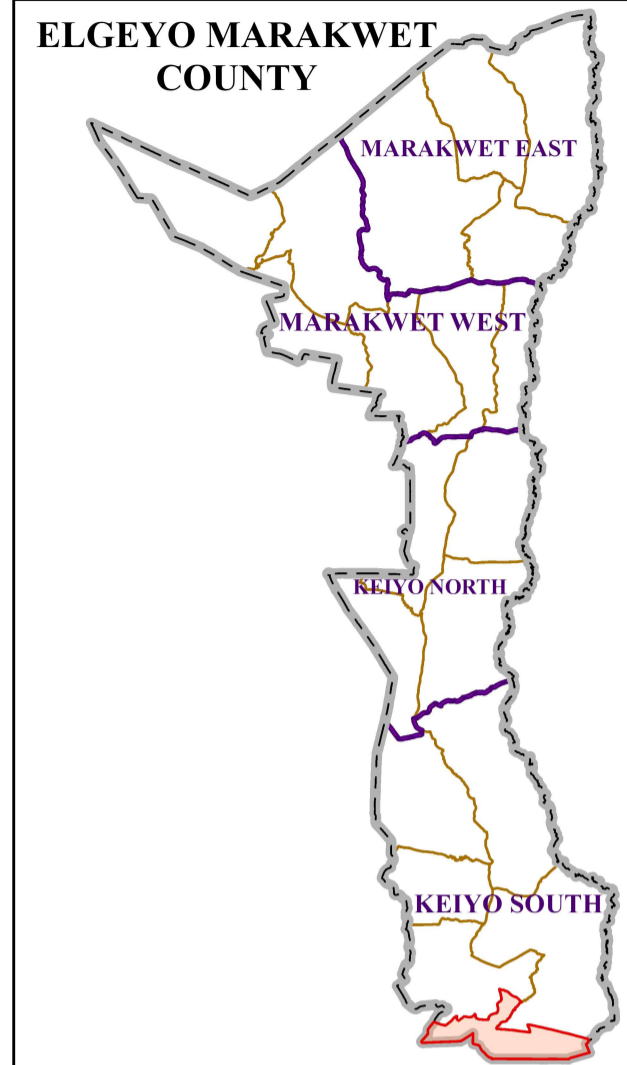
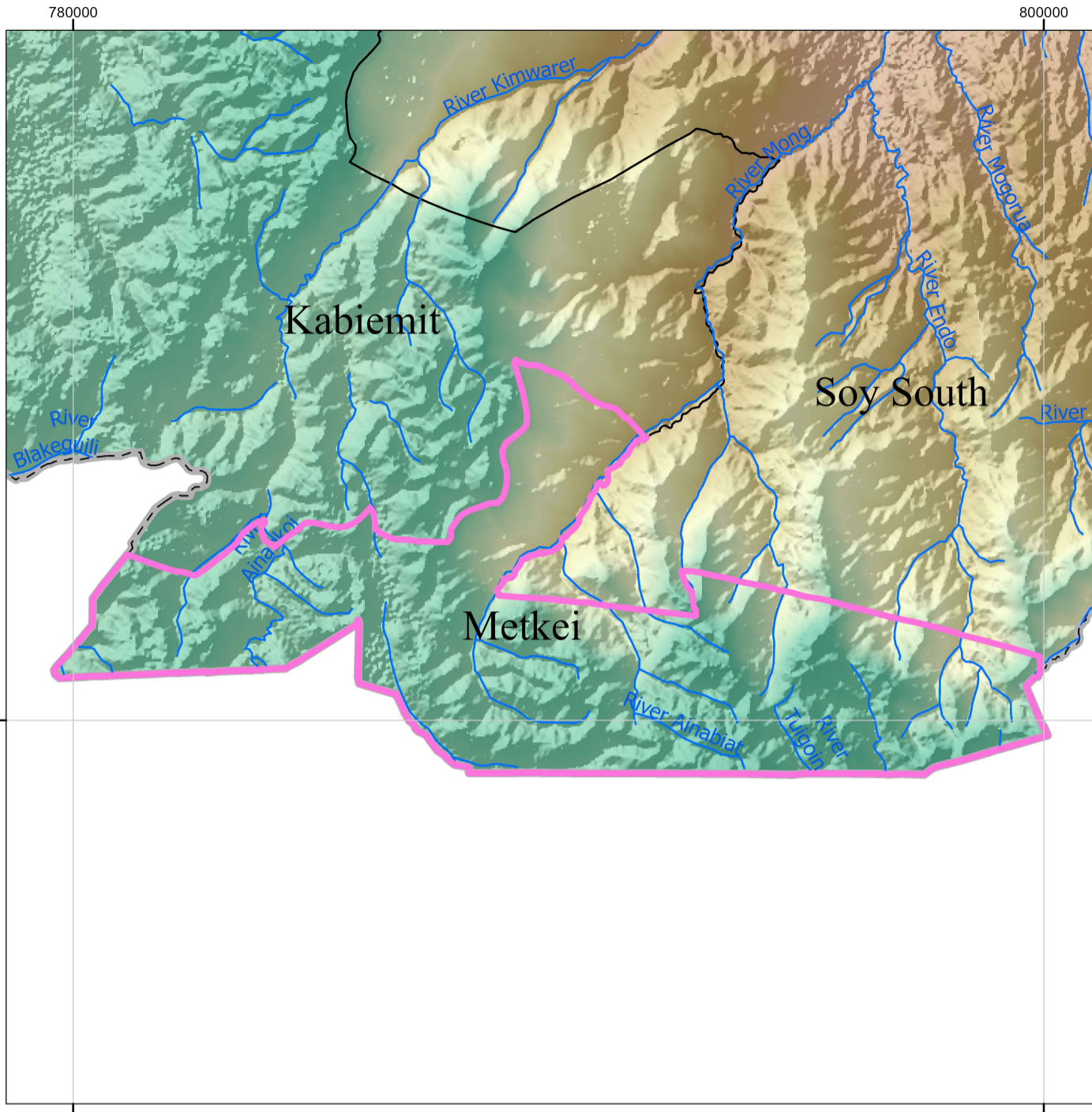
OPD attendance >5yrs Female	11,074
OPD attendance >5yrs Male	7,756
OPD Attendance <5yrs Female	3,034
OPD Attendance <5yrs Male	3,154
Total OPD attendance	25,018



POVERTY LEVEL

41.2%

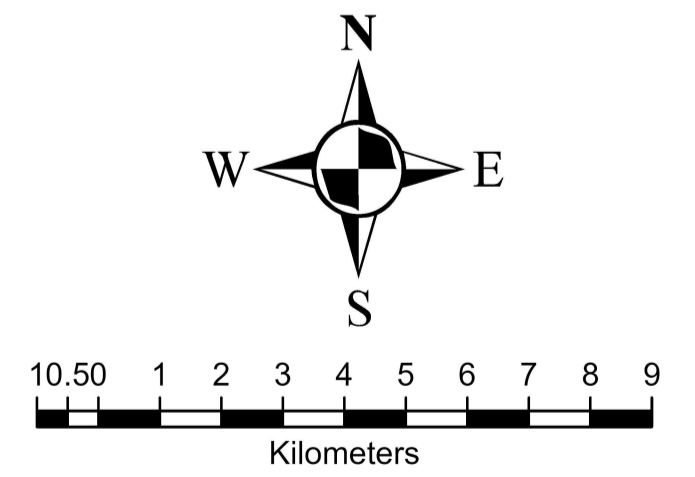
METKEI WARD



Legend

Towns/ Urban Centres Roads

- County Headquarters
- Major Centre
- Other Centres
- 🏠 ECD Centres (13)
- 🏥 County Hospital (0)
- 🏥 Sub-County Hospital (1)
- 🏥 Health Centre (0)
- 🏥 Dispensary (3)
- Mission Hospital (0)
- 🛣️ National Trunk Roads
- 🛣️ Primary Roads
- 🛣️ Secondary Roads
- 🛣️ Other Roads
- 🏠 EMC_Wards
- 🗺️ EMC County Boundary
- 🌊 Rivers
- 📏 EMC Elevation Value (m)
- 3488
- 914



SPATIAL REFERENCE
 NAME: ARC 1960 UTM ZONE 36N
 PCS: ARC 1960 UTM ZONE 36N
 GCS: GCS ARC 1960
 DATUM: ARC 1960
 PROJECTION: TRANSVERSE MERCATOR
 MAP UNITS: METER