

Kapyego Ward Health Profile

Situational Analysis

Kapyego Ward faces significant health challenges, as evidenced by various health indicators. The ward ranks poorly in several critical health areas, particularly skilled birth attendance (40.4%), the proportion of children fully immunized (34.9%), and high incidences of diarrheal diseases (25.7%). The ward also grapples with issues such as high rates of stunting (24.6%) and wasting (4.9%). Despite moderate latrine coverage (84%) and relatively high handwashing coverage (44%), the high teenage pregnancy rate (27.8%) and poor SHA/SHIF coverage (17%) suggest gaps in healthcare access, preventive care, and education. Furthermore, the limited health infrastructure and equipment in various dispensaries exacerbate these issues. The following strategies and interventions are aimed at addressing these challenges.

I. Skilled Birth Attendance and Maternity Services

- **Indicator:** Births attended by skilled health staff (Ward: 40.4%, County: 67.5%, Rank: 10)
 - **Justification:** Low skilled birth attendance underlines the need to improve maternal health services and access to skilled care during childbirth.
 - **Proposed Interventions:**
 - Construction of **modern maternity wings** at Kamasia Health Centre (Ksh. 4,000,000).
 - Procurement of **assorted maternal medical equipment** (Ksh. 2,000,000) for Kapyego, Segut, and Tenderwa dispensaries.
 - **Mama Penda Kits** (Ksh. 500,000 annually) to incentivize facility-based deliveries.
 - Support for **Community Health Volunteers (CHVs)** in maternal health education (Ksh. 1,200,000 annually).
-

2. Immunization Coverage

- **Indicator:** Proportion of children fully immunized (Ward: 34.9%, County: 73.3%, Rank: 18)
 - **Justification:** Immunization rates are well below the national average, highlighting the need for better coverage and outreach.
 - **Proposed Interventions:**
 - Expansion of **immunization outreach programs** (Ksh. 2,500,000 annually) across the ward.
 - Installation of **automation and ICT equipment** for better immunization data management and follow-ups (Ksh. 3,000,000).
 - Capacity building for **CHVs** to increase immunization rates (Ksh. 2,500,000).
-

3. Water, Sanitation, and Hygiene (WASH)

- **Indicators:**
 - Latrine Coverage (Ward: 84%, County: 73.9%, Rank: 4)
 - Handwashing Coverage (Ward: 44%, County: 43.4%, Rank: 8)
 - Diarrheal Disease Incidence (Ward: 25.7%, County: 8.4%, Rank: 2)
 - **Justification:** The high incidence of diarrheal diseases and gaps in sanitation infrastructure necessitate urgent improvements in WASH services.
 - **Proposed Interventions:**
 - Construction of **toilets** (Ksh. 300,000) and **burning chambers** (Ksh. 1,000,000) at various dispensaries.
 - **Piped water connections** (Ksh. 500,000 per facility) and procurement of **10,000-liter water tanks** (Ksh. 200,000 each) to improve water access and sanitation.
 - Expansion of **handwashing stations** in healthcare facilities to promote hygiene practices.
-

4. Malaria Control

- **Indicator:** Malaria incidence per 1,000 population (Ward: 0.3%, County: 21.6%, Rank: 20)
 - **Justification:** The low incidence of malaria in the ward is encouraging, but ongoing prevention efforts are needed to maintain this trend.
 - **Proposed Interventions:**
 - **Malaria control programs** including IRS (Indoor Residual Spray) and net distribution (Ksh. 2,500,000).
 - Establishment of **malaria diagnostic facilities** by constructing and equipping **X-ray rooms** (Ksh. 4,000,000).
 - **Procurement of malaria treatment drugs** (Ksh. 2,500,000 annually).
-

5. Teenage Pregnancy

- **Indicator:** Teenage pregnancy rate (10-19 years) (Ward: 27.8%, County: 18.6%, Rank: 4)
 - **Justification:** The high rate of teenage pregnancies calls for a targeted approach in sexual and reproductive health education.
 - **Proposed Interventions:**
 - Support for **reproductive health outreaches** (Ksh. 2,500,000 annually).
 - **Community sensitization programs** (Ksh. 1,200,000) aimed at reducing teenage pregnancies and promoting family planning.
 - **Procurement of contraceptive kits** (Ksh. 500,000 annually) to increase access to birth control services.
-

6. Health Insurance Coverage

- **Indicator:** Proportion covered by health insurance (Ward: 17%, County: 25%, Rank: 10)
 - **Justification:** Low health insurance coverage limits access to essential healthcare services.
 - **Proposed Interventions:**
 - **SHA/SHIF for vulnerable groups**, including persons with disabilities and the elderly (Ksh. 1,000,000).
 - **Community awareness campaigns** to increase SHA/SHIF enrolment and utilization (Ksh. 2,000,000).
-

7. OPD Utilization Rate

- **Indicator:** OPD Utilization Rate (Ward: 1.1, County: 1.9%, Rank: 14)
 - **Justification:** Low OPD utilization is a key indicator of healthcare access and patient engagement issues.
 - **Proposed Interventions:**
 - Construction of **OPD blocks** at various dispensaries (Ksh. 3,000,000 each) to enhance service accessibility.
 - Procurement of **drugs** (Ksh. 2,500,000 annually) to ensure the availability of essential medicines.
 - Infrastructure improvements such as **fencing, waiting bays, and staff housing** to attract and retain healthcare workers.
-

8. Nutrition and Stunting

- **Indicator:** Prevalence of Stunting (Ward: 24.6%, County: 25.6%, Rank: 17)
 - **Justification:** The stunting rate in the ward is concerning and highlights the need for targeted nutrition interventions.
 - **Proposed Interventions:**
 - **Nutrition programs** (Ksh. 3,750,000 annually) targeting children under 5 years.
 - Procurement of **nutrition supplements** and fortified foods to combat malnutrition.
 - **Capacity building for health staff** on proper nutrition management for children and pregnant women.
-

9. Infrastructure and Equipment

- **Proposed Interventions:**
 - **Automation** through HMIS and ICT equipment (Ksh. 3,000,000) to improve data management and service delivery.
 - **Construction of staff houses** (Ksh. 4,000,000 each) to retain healthcare personnel in remote facilities.
 - **Solar panels** (Ksh. 500,000 each) for reliable power supply, especially in rural dispensaries.
-

10. Emergency Services

- **Proposed Interventions:**
 - **Provision for an Emergency Transfer Centre** (Ksh. 2,500,000) to support emergency medical evacuations.
 - **Procurement of motorbikes** (Ksh. 600,000) for efficient transportation of healthcare workers to remote locations.



KAPYEGO WARD HEALTH PROFILE

DEPARTMENT OF HEALTH SERVICES

POPULATION
20,650

MALE
10,435

FEMALE
10,214

HOUSEHOLDS
4,195

Key Indicators

Indicator	Ward	County	Rank
Births attended by skilled health staff	40.4%	67.5%	10
Incidence of diarrhoeal diseases	25.7%	8.4%	2
Proportion of children fully immunized	34.9%	73.3%	18
Latrine Coverage	84%	73.9%	4
Prevalence of Stunting	24.6%	25.6%	17
Prevalence of Wasting	4.9%	5.1%	17
Handwashing Coverage	44%	43.4%	8
Malaria incidence per 1,000 population	0.3%	21.6%	20
Eye diseases morbidity rate	2.5%	3.2%	14
Modern contraceptive prevalence rate	31.2%	35.2%	8
OPD Utilization Rate	1.1	1.9%	14
Proportion covered by a health insurance	17%	25%	10
Teenage pregnancy rate (10-19 years)	27.8%	18.6%	4

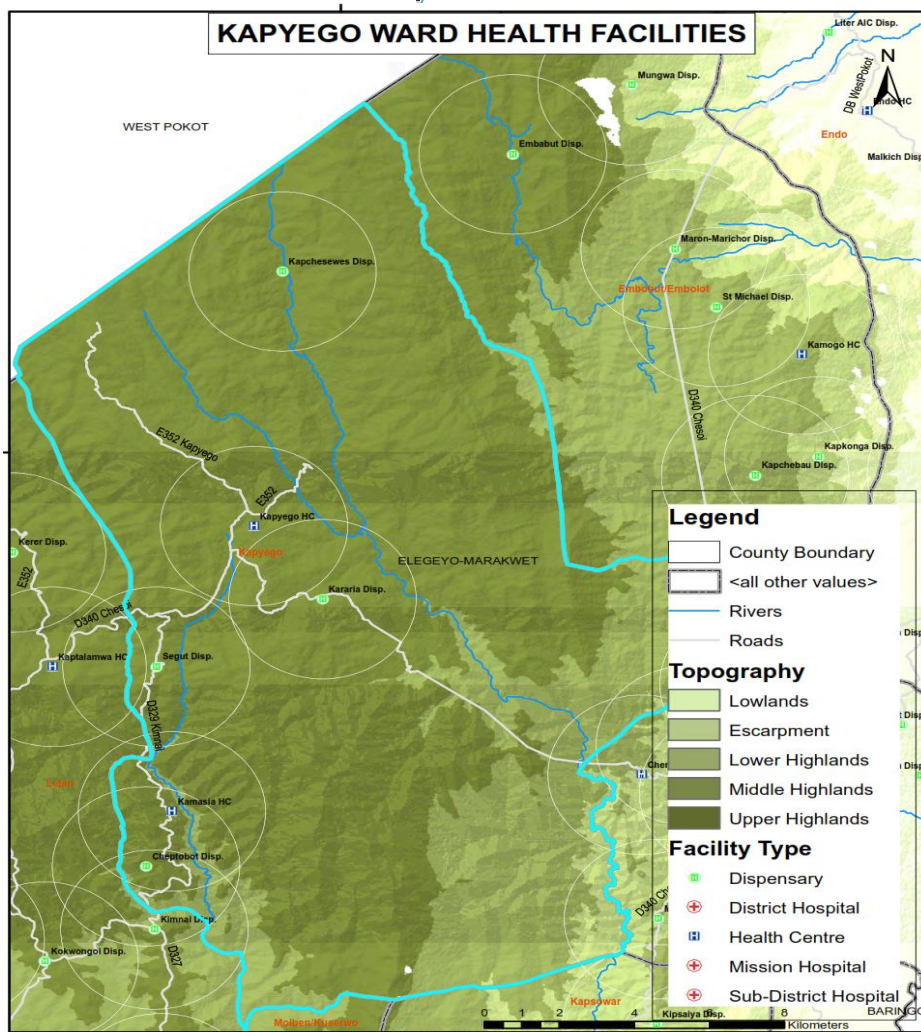
Top Diseases

Disease	%	Cost
URTIs	67.6	2,883,750/-
Diarrhoea	10.1	258,900/-
Pneumonia	9.5	731,700/-
Disease of the skin	6.4	163,800/-
Eye Infections	2.5	42,800/-
Urinary Tract Infection	1.5	139,700/-
Intestinal worms	1.4	24,300/-
Typhoid fever	0.8	239,750/-
Malaria	0.1	6,400/-
Jiggers Infestation	0.1	2,500/-

Burden of Preventable Diseases

53% **4,488,700/-**

Facility Distribution



List of Health Facilities

Health Facilities	Level
Cheptobot Dispensary	2
Kamasia Health Centre	3
Kapyego Health Centre	3
Kararia Dispensary	2
Segut Dispensary	2
Tenderwa dispensary	2

OPD Attendance

OPD attendance >5yrs Female	13,943
OPD attendance >5yrs Male	9,019
OPD Attendance <5yrs Female	3,064
OPD Attendance <5yrs Male	5,942
Total OPD attendance	31,968



POVERTY LEVEL

41.1%

