

# EMBOBUT/EMBOLOT WARD HEALTH PROFILE

## Situational Analysis

Embobut/Embolot Ward faces critical health challenges that require urgent interventions to improve healthcare service delivery. Key health indicators highlight low skilled birth attendance (12.4%), low immunization rates (23.2%), and poor health insurance coverage (9%). Additionally, the ward struggles with teenage pregnancy (28.1%) and OPD utilization rates (0.9), which point to gaps in healthcare accessibility and service quality. Infrastructure deficiencies, including inadequate staff housing and medical equipment, further exacerbate these challenges.

## Proposed Projects and Strategic Interventions

### 1. Automation and ICT Enhancement

**Indicator:** Proportion covered by health insurance (Ward: 9%, County: 25%, Rank: 19)

- **Justification:** Digital health systems will improve service delivery, enhance data management, and facilitate insurance coverage tracking.
- **Proposed Interventions:**
  - Automation of Kamogo Health Centre and other facilities (Ksh. 3,700,000)
  - Procurement of ICT equipment for data management and telehealth services
  - Capacity building for health staff on HMIS utilization

### 2. Maternal and Child Health

**Indicators:** Births attended by skilled health staff (Ward: 12.4%, County: 67.5%, Rank: 19)

- **Justification:** Low skilled birth attendance rates necessitate investment in maternal healthcare facilities and outreach programs.
- **Proposed Interventions:**
  - Construction of maternity and staff houses at Kamogo Health Centre (Ksh. 4,000,000)
  - Procurement of assorted medical equipment (Ksh. 5,000,000)
  - Mama Penda Kits to encourage facility-based deliveries (Ksh. 2,500,000 annually)
  - Performance-based incentives for CHPs to promote maternal health awareness (Ksh. 1,200,000)

### 3. Laboratory and Diagnostic Services

**Indicators:** OPD Utilization Rate (Ward: 0.9, County: 1.9%, Rank: 17)

- **Justification:** Strengthening diagnostic capacity will encourage higher OPD utilization and early disease detection.
- **Proposed Interventions:**
  - Construction of laboratory rooms in multiple health facilities (Ksh. 8,000,000)
  - Procurement of imaging equipment (Ksh. 2,000,000)

- Construction of X-ray unit (Ksh. 1,000,000)

#### 4. Sanitation and Waste Management

**Indicators:** Latrine Coverage (Ward: 73%, County: 73.9%, Rank: 11), Handwashing Coverage (Ward: 54%, County: 43.4%, Rank: 6)

- **Justification:** Proper sanitation facilities are essential for infection control and improved public health.
- **Proposed Interventions:**
  - Construction of septic tanks (Ksh. 3,000,000)
  - Construction of burning chambers (Ksh. 3,000,000)
  - Installation of water tanks and piping systems (Ksh. 900,000)

#### 5. Nutrition Programs

**Indicators:** Prevalence of Stunting (Ward: 24.7%, County: 25.6%, Rank: 14)

- **Justification:** High stunting rates indicate the need for targeted nutrition interventions.
- **Proposed Interventions:**
  - Annual nutrition interventions (Ksh. 3,750,000)
  - Procurement of nutrition supplements and training of healthcare workers

#### 6. Emergency and Referral Services

**Indicators:** OPD Utilization Rate (Ward: 0.9, County: 1.9%, Rank: 17)

- **Justification:** Efficient referral services are crucial for handling emergencies and improving health outcomes.
- **Proposed Interventions:**
  - Establishment of an Emergency Transfer Centre (Ksh. 2,500,000)
  - Procurement of motorbikes for community health units (Ksh. 1,200,000)

#### 7. Community Health Strengthening

**Indicators:** Teenage pregnancy rate (Ward: 28.1%, County: 18.6%, Rank: 3)

- **Justification:** Strengthening community health interventions will help address reproductive health issues and promote preventive healthcare.
- **Proposed Interventions:**
  - Procurement of CHPs kits (Ksh. 1,500,000)
  - Community sensitization outreaches (Ksh. 2,500,000 annually)
  - Performance incentives for CHPs (Ksh. 1,200,000)

## 8. Health Insurance Coverage

**Indicators:** Proportion covered by health insurance (Ward: 9%, County: 25%, Rank: 19)

- **Justification:** Increasing SHA/SHIF coverage will improve financial access to healthcare services.
- **Proposed Interventions:**
  - SHA/SHIF coverage for vulnerable groups (Ksh. 1,000,000)
  - Community awareness campaigns to increase SHA/SHIF enrollment

## 9. Facility Upgrades and Expansion

**Indicators:** OPD Utilization Rate (Ward: 0.9, County: 1.9%, Rank: 17)

- **Justification:** Infrastructure improvements will enhance service delivery and attract more patients.
- **Proposed Interventions:**
  - Upgrade of Mungwa Health Centre to Sub County Hospital (Ksh. 50,000,000)
  - Construction of new dispensaries (Ksh. 30,000,000)
  - Construction of additional staff houses (Ksh. 6,000,000)



# EMBOBUT/EMBOLOT WARD HEALTH PROFILE

DEPARTMENT OF HEALTH SERVICES

**POPULATION**  
**36,565**

**MALE**  
**18,064**

**FEMALE**  
**18,501**

**HOUSEHOLDS**  
**7,623**

### Key Indicators

Indicator	Ward	County	Rank
Births attended by skilled health staff	12.4%	67.5%	19
Incidence of diarrhoeal diseases	0.2%	8.4%	20
Proportion of children fully immunized	23.2%	73.3%	20
Latrine Coverage	73%	73.9%	11
Prevalence of Stunting	24.7%	25.6%	14
Prevalence of Wasting	4.9%	5.1%	14
Handwashing Coverage	54	43.4%	6
Malaria incidence per 1,000 population	0.8%	21.6%	16
Eye diseases morbidity rate	2.8%	3.2%	9
Modern contraceptive prevalence rate	33	35.2%	6
OPD Utilization Rate	0.9	1.9%	17
Proportion covered by a health insurance	9%	25%	19
Teenage pregnancy rate (10-19 years)	28.1%	18.6%	3

### Top Diseases

Disease	%	Cost
URTIs	61.0	2,485,000/-
Disease of the skin	15.0	365,400/-
Pneumonia	7.7	567,450/-
Diarrhoea	7.2	175,800/-
Urinary Tract Infection	3.1	273,900/-
Eye Infections	2.8	45,900/-
Intestinal worms	1.5	24,600/-
Typhoid fever	1.5	423,500/-
Malaria	0.3	6,800/-

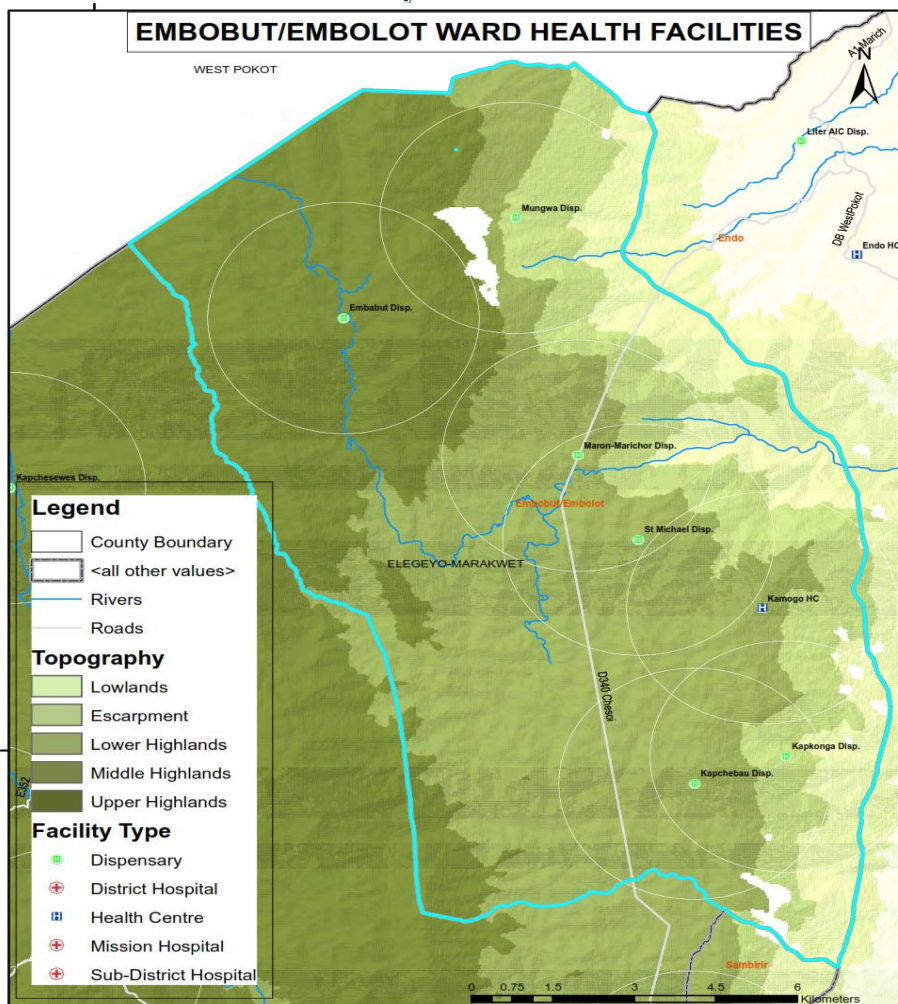
### Burden of Preventable Diseases

**67%** **4,367,750/-**

### List of Health Facilities

Health Facilities	Level
Kamogo Health Centre	3
Kapchebau Dispensary	2
Maron-Marichor Dispensary	2
Mungwa Dispensary	2
St Michael Dispensary	2
Tangul Dispensary	2
Tot Sub-County Hospital	3B

### Facility Distribution



### OPD Attendance

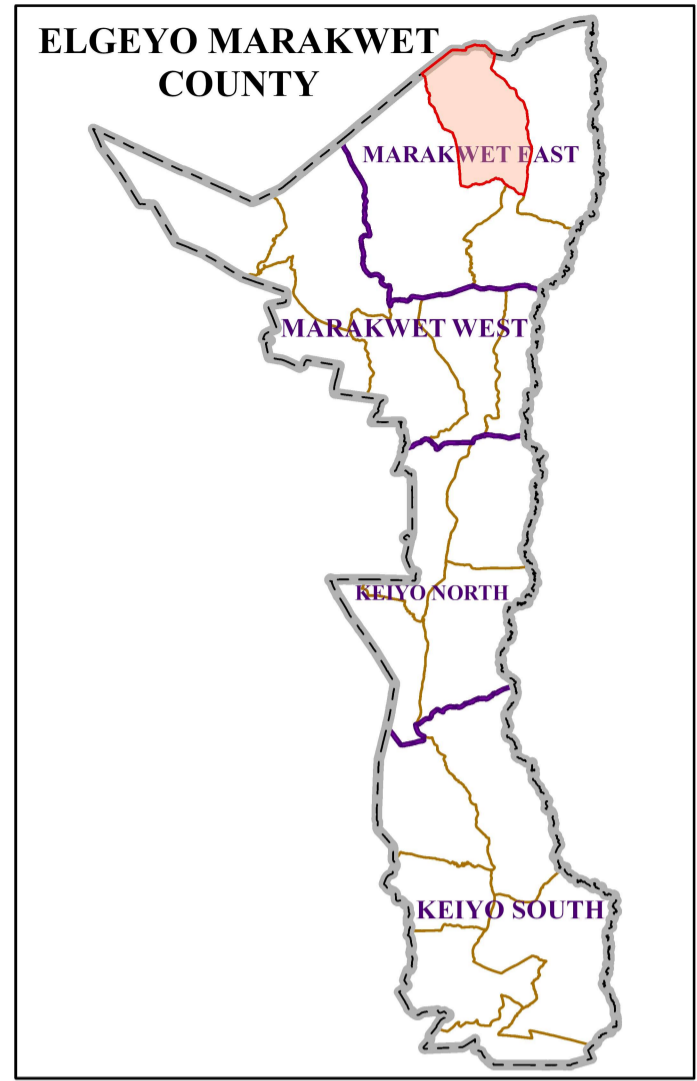
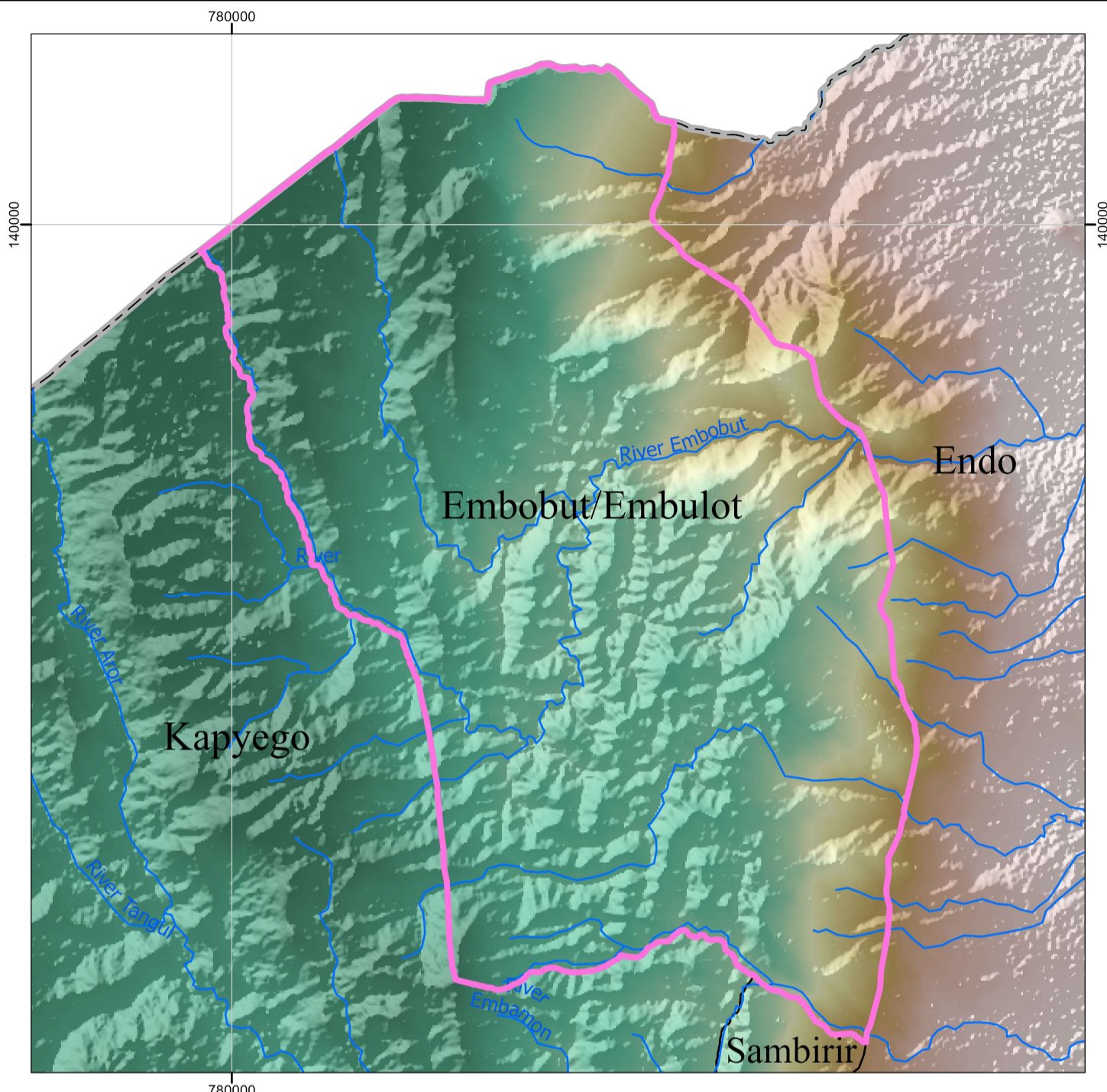
OPD attendance >5yrs Female	12,259
OPD attendance >5yrs Male	7,113
OPD Attendance <5yrs Female	2,425
OPD Attendance <5yrs Male	2,716
<b>Total OPD attendance</b>	<b>24,513</b>



**POVERTY LEVEL**

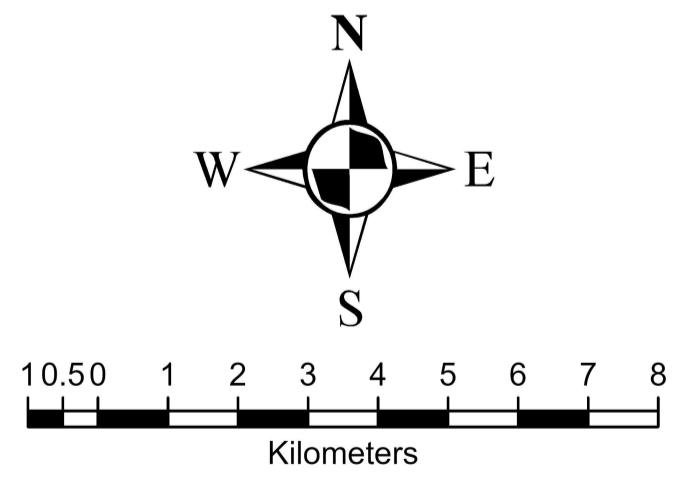
**41.3%**

# EMBOBUT/EMBULOT WARD



### Legend

County Headquarters	National Trunk Roads
Major Centre	Primary Roads
Other Centres	Secondary Roads
ECD Centres (10)	Other Roads
County Hospital (0)	EMC_Wards
Sub-County Hospital (0)	EMC County Boundary
Health Centre (1)	Rivers
Dispensary (6)	EMC Elevation
Mission Hospital (0)	Value (m)
	3488
	914



Scale: 1:108,000

**SPATIAL REFERENCE**  
 NAME: ARC 1960 UTM ZONE 36N  
 PCS: ARC 1960 UTM ZONE 36N  
 GCS: GCS ARC 1960  
 DATUM: ARC 1960  
 PROJECTION: TRANSVERSE MERCATOR  
 MAP UNITS: METER

EMC CARTOGRAPHY