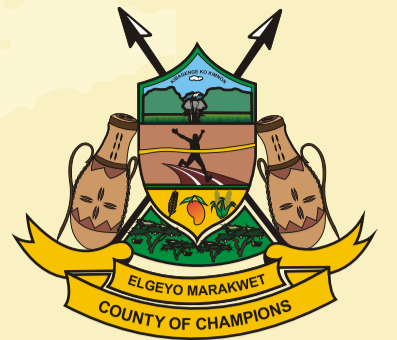
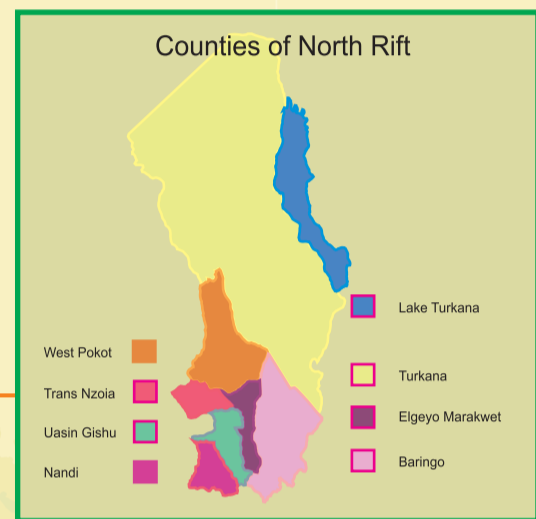
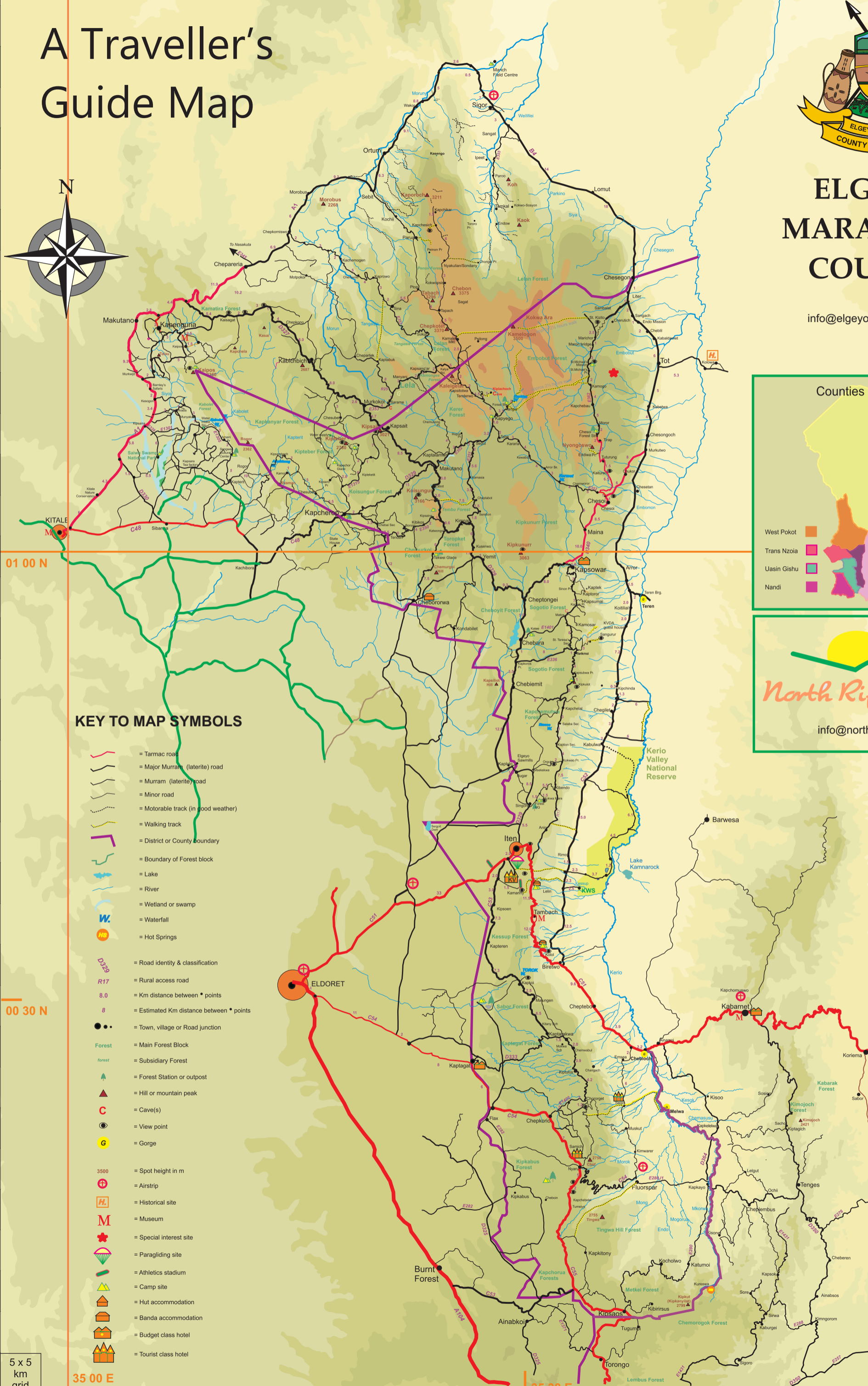


A Traveller's Guide Map



ELGEYO MARAKWET COUNTY

info@elgeyomarakwet.go.ke



North Rift Tourism
info@northrifttourism.com

KEY TO MAP SYMBOLS

- = Tarmac road
- = Major Murrum (laterite) road
- = Murrum (laterite) road
- = Minor road
- = Motorable track (in good weather)
- = Walking track
- = District or County boundary
- = Boundary of Forest block
- = Lake
- = River
- = Wetland or swamp
- = Waterfall
- = Hot Springs
- = Road identity & classification
- = Rural access road
- = Km distance between * points
- = Estimated Km distance between * points
- = Town, village or Road junction
- = Forest
- = Main Forest Block
- = Subsidiary Forest
- = Forest Station or outpost
- = Hill or mountain peak
- = Cave(s)
- = View point
- = Gorge
- = Spot height in m
- = Airstrip
- = Historical site
- = Museum
- = Special interest site
- = Paragliding site
- = Athletics stadium
- = Camp site
- = Hut accommodation
- = Banda accommodation
- = Budget class hotel
- = Tourist class hotel

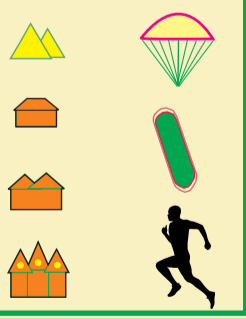
ITEN

THE COUNTY TOWN
ELGEYO MARAKWET
2360 m

The center for high-altitude athletics training and adventure paragliding in the North Rift.



Tourists visiting Iten market



This map may not be reproduced in full or part without the express permission of the County Government of Elgeyo Marakwet and the North Rift Tourism Association.

© 2014

5 x 5 km grid